



[Go to Product page](#)

Datasheet for ABIN7042964

anti-Bestrophin 1 antibody (3rd Extracellular Loop)

3 Images

Overview

Quantity:	50 µL
Target:	Bestrophin 1 (BEST1)
Binding Specificity:	3rd Extracellular Loop, AA 259-270
Reactivity:	Human, Mouse, Rat
Host:	Rabbit
Clonality:	Polyclonal
Application:	Western Blotting (WB), Immunohistochemistry (IHC), Flow Cytometry (FACS)

Product Details

Immunogen:	Immunogen: Synthetic peptide Immunogen Sequence: (C)NPNKDYPGHEMD, corresponding to amino acid residues 259-270 of mouse Bestrophin-1
Isotype:	IgG
Characteristics:	Anti-Bestrophin-1 (extracellular) Antibody is directed against an extracellular epitope of mouse Bestrophin-1. Anti-Bestrophin-1 (extracellular) Antibody (ABIN7042964, ABIN7043934 and ABIN7043935)) can be used in western blot, immunohistochemistry and indirect flow cytometry applications. It has been designed to recognize bestrophin-1 channel from mouse, rat and human samples.
Purification:	Affinity purified on immobilized antigen.

Target Details

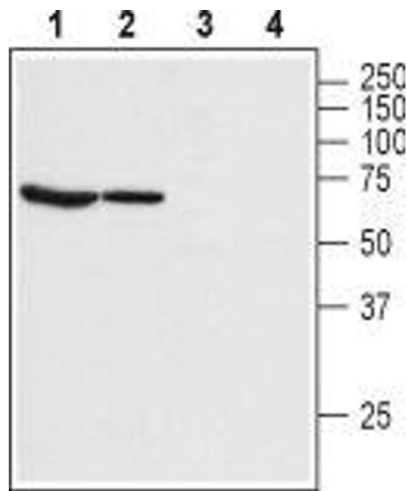
Target:	Bestrophin 1 (BEST1)
Alternative Name:	Bestrophin-1 (BEST1 Products)
Background:	Alternative names: Bestrophin-1, BEST1, Vitelliform macular dystrophy protein 2, VMD2, BMD1
Gene ID:	24115
NCBI Accession:	NM_004183
UniProt:	O88870

Application Details

Application Notes:	Optimal working dilution should be determined by the investigator.
Restrictions:	For Research Use only

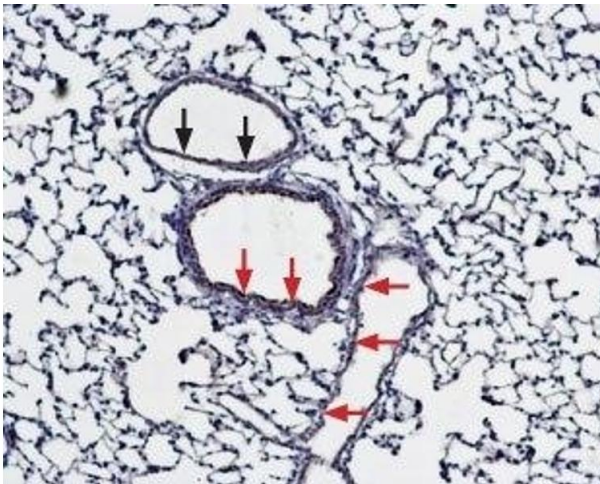
Handling

Format:	Lyophilized
Reconstitution:	25 µL, 50 µL or 0.2 mL double distilled water (DDW), depending on the sample size.
Concentration:	0.8 mg/mL
Buffer:	Reconstituted antibody contains phosphate buffered saline (PBS), pH 7.4, 1 % BSA, 0.05 % Sodium azide.
Preservative:	Sodium azide
Precaution of Use:	This product contains Sodium azide: a POISONOUS AND HAZARDOUS SUBSTANCE which should be handled by trained staff only.
Storage:	RT, 4 °C, -20 °C
Storage Comment:	Storage before reconstitution: The antibody ships as a lyophilized powder at room temperature. Upon arrival, it should be stored at -20°C. Storage after reconstitution: The reconstituted solution can be stored at 4°C for up to 1 week. For longer periods, small aliquots should be stored at -20°C. Avoid multiple freezing and thawing. Centrifuge all antibody preparations before use (10000 x g 5 min).



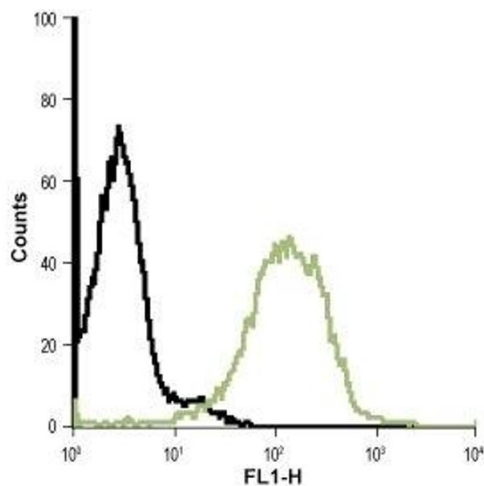
Western Blotting

Image 1. Western blot analysis of rat lung (lanes 1 and 3) and rat eye (lanes 2 and 4) lysate: - 1,2. Anti-Bestrophin-1 (extracellular) Antibody (ABIN7042964, ABIN7043934 and ABIN7043935), (1:200).3,4. Anti-Bestrophin-1 (extracellular) Antibody, preincubated with Bestrophin-1 (extracellular) Blocking Peptide (#BLP-BC001).



Immunohistochemistry

Image 2. Expression of Bestrophin-1 in rat lung - Immunohistochemical staining of paraffin embedded rat lung sections using Anti-Bestrophin-1 (extracellular) Antibody (ABIN7042964, ABIN7043934 and ABIN7043935), (1:100). BEST1 is expressed both in the respiratory epithelium (red arrows) and in vascular smooth muscle (black arrows). Hematoxylin is used as the counterstain.



Flow Cytometry

Image 3. Cell surface detection of Bestrophin-1 in live intact Jurkat (human T cell leukemia) cell line: (black line) Control cells + goat-anti-rabbit-FITC. (green line) Cells + Anti-Bestrophin-1 (extracellular) Antibody (ABIN7042964, ABIN7043934 and ABIN7043935), (1:20) + goat-anti-rabbit-FITC.