



Datasheet for ABIN7042965

anti-Bestrophin 2 antibody (3rd Extracellular Loop)



[Go to Product page](#)

3 Images

Overview

Quantity:	50 µL
Target:	Bestrophin 2 (BEST2)
Binding Specificity:	3rd Extracellular Loop, AA 259-270
Reactivity:	Human, Mouse, Rat
Host:	Rabbit
Clonality:	Polyclonal
Application:	Western Blotting (WB), Immunohistochemistry (IHC)

Product Details

Immunogen:	Immunogen: Synthetic peptide Immunogen Sequence: (C)DPAQGYKDHTLD, corresponding to amino acid residues 259-270 of mouse Bestrophin-2
Isotype:	IgG
Characteristics:	Anti-Bestrophin-2 (extracellular) Antibody is directed against an epitope located at the 3rd extracellular loop of mouse Bestrophin-2. Anti-Bestrophin-2 (extracellular) Antibody (ABIN7042965 and ABIN7043936)) can be used in western blot and immunohistochemical applications, and has been designed to recognize bestrophin-2 channel from mouse, rat and human samples.
Purification:	Affinity purified on immobilized antigen.

Target Details

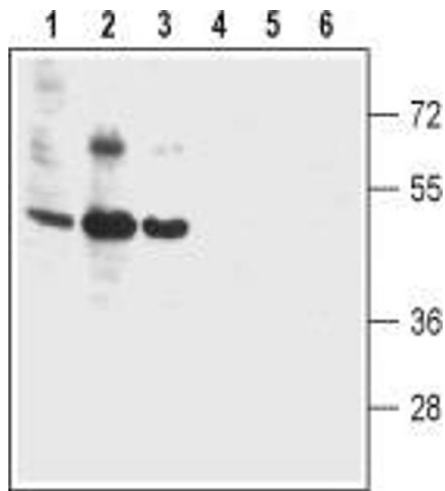
Target:	Bestrophin 2 (BEST2)
Alternative Name:	Bestrophin-2 (BEST2 Products)
Background:	Alternative names: Bestrophin-2, BEST2, Vitelliform macular dystrophy 2-like protein 1, VMD2L1
Gene ID:	212989
NCBI Accession:	NM_017682
UniProt:	Q8BGM5

Application Details

Application Notes:	Optimal working dilution should be determined by the investigator.
Restrictions:	For Research Use only

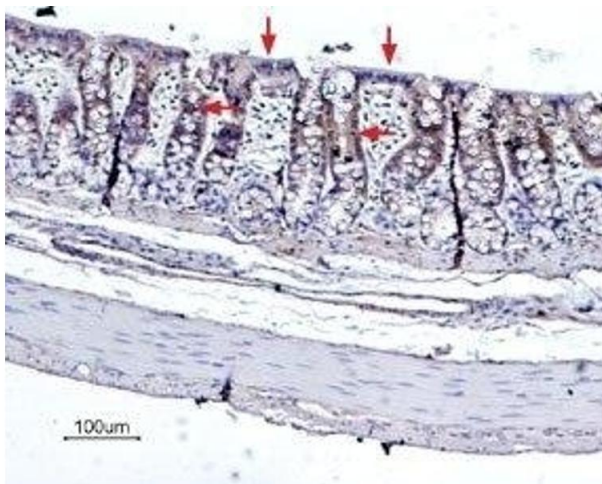
Handling

Format:	Lyophilized
Reconstitution:	50 µL or 0.2 mL double distilled water (DDW), depending on the sample size.
Concentration:	0.8 mg/mL
Buffer:	Reconstituted antibody contains phosphate buffered saline (PBS), pH 7.4, 1 % BSA, 0.05 % Sodium azide.
Preservative:	Sodium azide
Precaution of Use:	This product contains Sodium azide: a POISONOUS AND HAZARDOUS SUBSTANCE which should be handled by trained staff only.
Storage:	RT,4 °C,-20 °C
Storage Comment:	Storage before reconstitution: The antibody ships as a lyophilized powder at room temperature. Upon arrival, it should be stored at -20°C. Storage after reconstitution: The reconstituted solution can be stored at 4°C for up to 1 week. For longer periods, small aliquots should be stored at -20°C. Avoid multiple freezing and thawing. Centrifuge all antibody preparations before use (10000 x g 5 min).



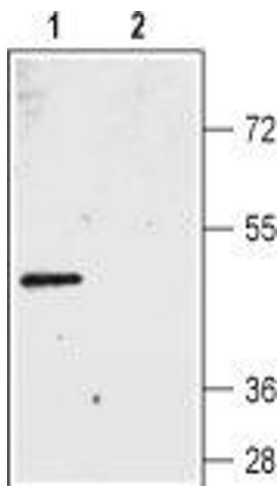
Western Blotting

Image 1. Western blot analysis of human colon cancer cell lines Colo-205 (lanes 1 and 4), human T-84 colonic adenocarcinoma cell line (lanes 2 and 5) and human colon cancer HT-29 cell line (lanes 3 and 6): - 1-3. Anti-Bestrophin-2 (extracellular) Antibody (ABIN7042965 and ABIN7043936), (1:200).4-6. Anti-Bestrophin-2 (extracellular) Antibody, preincubated with Bestrophin-2 (extracellular) Blocking Peptide (#BLP-BC002).



Immunohistochemistry

Image 2. Expression of Bestrophin-2 in rat colon - Immunohistochemical staining of rat colon paraffin embedded sections using Anti-Bestrophin-2 (extracellular) Antibody (ABIN7042965 and ABIN7043936), (1:100), (brown). BEST2 is expressed in the columnar absorptive cells of the colonic epithelium (arrows). Hematoxilin is used as the counterstain.



Western Blotting

Image 3. Western blot analysis of rat colon membranes: - 1. Anti-Bestrophin-2 (extracellular) Antibody (ABIN7042965 and ABIN7043936), (1:200).2. Anti-Bestrophin-2 (extracellular) Antibody, preincubated with Bestrophin-2 (extracellular) Blocking Peptide (#BLP-BC002).