

Datasheet for ABIN7042966

**anti-Bombesin Receptor 3 antibody (2nd Extracellular Loop)**

5 Images

[Go to Product page](#)

## Overview

Quantity:	50 µL
Target:	Bombesin Receptor 3
Binding Specificity:	2nd Extracellular Loop, AA 186-201
Reactivity:	Human, Mouse, Rat
Host:	Rabbit
Clonality:	Polyclonal
Application:	Immunohistochemistry (IHC), Western Blotting (WB), Flow Cytometry (FACS)

## Product Details

Immunogen:	Immunogen: Synthetic peptide Immunogen Sequence: (C)SNVYTFRDPNKNMTFE, corresponding to amino acid residues 186-201 of human BRS3
Isotype:	IgG
Characteristics:	Anti-Bombesin Receptor 3 (extracellular) Antibody is directed against a well conserved epitope of the human BB3 receptor. Anti-Bombesin Receptor 3 (extracellular) Antibody (ABIN7042966 and ABIN7043938)) can be used in western blot analysis, as well as immunohistochemical and flow cytometry applications, and will recognize BRS3 from rat and mouse samples.
Purification:	Affinity purified on immobilized antigen.

## Target Details

Target:	Bombesin Receptor 3
---------	---------------------

## Target Details

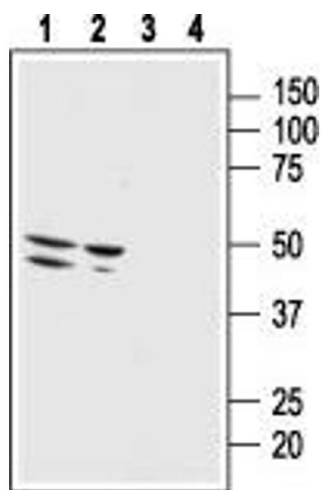
Abstract:	<a href="#">Bombesin Receptor 3 Products</a>
Background:	Alternative names: Bombesin Receptor 3, BB3, BRS3
Gene ID:	680
NCBI Accession:	<a href="#">NM_001727</a>
UniProt:	<a href="#">P32247</a>

## Application Details

Application Notes:	Optimal working dilution should be determined by the investigator.
Restrictions:	For Research Use only

## Handling

Format:	Lyophilized
Reconstitution:	50 µL or 0.2 mL double distilled water (DDW), depending on the sample size.
Concentration:	0.8 mg/mL
Buffer:	Reconstituted antibody contains phosphate buffered saline (PBS), pH 7.4, 1 % BSA, 0.05 % Sodium azide.
Preservative:	Sodium azide
Precaution of Use:	This product contains Sodium azide: a POISONOUS AND HAZARDOUS SUBSTANCE which should be handled by trained staff only.
Storage:	RT, 4 °C, -20 °C
Storage Comment:	<p>Storage before reconstitution: The antibody ships as a lyophilized powder at room temperature. Upon arrival, it should be stored at -20°C.</p> <p>Storage after reconstitution: The reconstituted solution can be stored at 4°C for up to 1 week. For longer periods, small aliquots should be stored at -20°C. Avoid multiple freezing and thawing. Centrifuge all antibody preparations before use (10000 x g 5 min).</p>



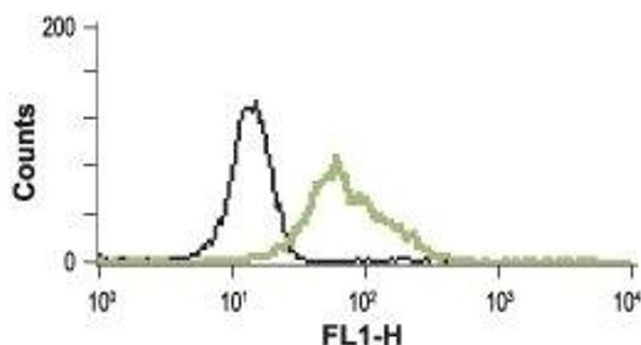
### Western Blotting

**Image 1.** Western blot analysis of human malignant melanoma cell line Malme-3M (lanes 1 and 3) and human normal skin fibroblast cell line Malme-3 (lanes 2 and 4): - 1,2. Anti-Bombesin Receptor 3 (extracellular) Antibody (ABIN7042966 and ABIN7043938), (1:500).3,4. Anti-Bombesin Receptor 3 (extracellular) Antibody, preincubated with Bombesin Receptor 3 (extracellular) Blocking Peptide (#BLP-BR003).



### Immunohistochemistry

**Image 2.** Expression of BRS3 in rat testes - Immunohistochemical staining of paraffin embedded rat testes section using Anti-Bombesin Receptor 3 (extracellular) Antibody (ABIN7042966 and ABIN7043938), (1:50). The area of the efferent ductules near the epididymis is shown. Intense stain (brown) is specific for the pseudostratified epithelium of the efferent ductules. DAB is used for the color reaction. H&E is used as the counterstain.



### Flow Cytometry

**Image 3.** Cell surface detection of BRS3 in live intact human promyelocytic leukemia HL-60 cells: (black line) Unstained cells + goat-anti-rabbit-FITC. (green line) Cells + Anti-Bombesin Receptor 3 (extracellular) Antibody (ABIN7042966 and ABIN7043938), (5 µg) + goat-anti-rabbit-FITC.

Please check the [product details page](#) for more images. Overall 5 images are available for ABIN7042966.