

Datasheet for ABIN7042968  
**anti-BDKRB2 antibody (C-Term, Intracellular)**[Go to Product page](#)

## 2 Images

## Overview

Quantity:	50 µL
Target:	BDKRB2
Binding Specificity:	AA 336-349, C-Term, Intracellular
Reactivity:	Human, Mouse, Rat
Host:	Rabbit
Clonality:	Polyclonal
Application:	Western Blotting (WB), Immunohistochemistry (IHC), Immunofluorescence (IF), Immunocytochemistry (ICC)

## Product Details

Immunogen:	Immunogen: Synthetic peptide Immunogen Sequence: GKRFRKKSWEVYQG(C), corresponding to amino acid residues 336-349 of human B2R
Isotype:	IgG
Characteristics:	Anti-B2 Bradykinin Receptor (BDKRB2) Antibody (ABIN7042968, ABIN7043942 and ABIN7043943)) is a highly specific antibody directed against an epitope of the human protein. The antibody can be used in western blot, immunohistochemistry, and immunocytochemistry applications. It has been designed to recognize B2R from human, rat, and mouse samples.
Purification:	Affinity purified on immobilized antigen.

## Target Details

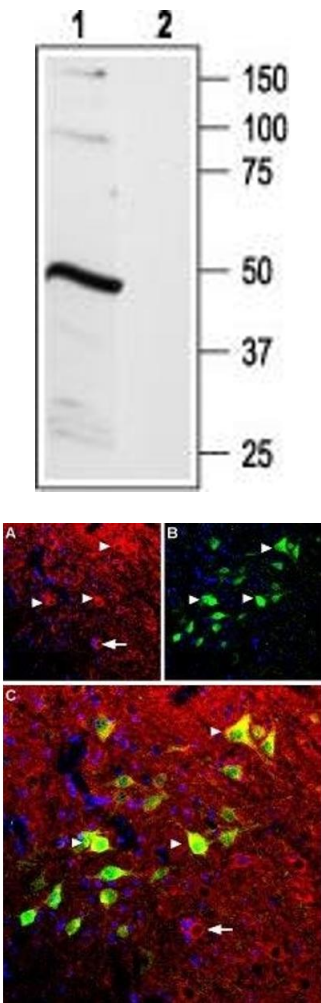
Target:	BDKRB2
Alternative Name:	B2 Bradykinin Receptor (BDKRB2) ( <a href="#">BDKRB2 Products</a> )
Background:	Alternative names: B2 Bradykinin Receptor (BDKRB2), B2R, BKR2, B2BKR, BKRB2, Kinin B2, BRADYB2
Gene ID:	624
NCBI Accession:	<a href="#">NM_000623</a>
UniProt:	<a href="#">P30411</a>
Pathways:	<a href="#">ACE Inhibitor Pathway</a> , <a href="#">Negative Regulation of intrinsic apoptotic Signaling</a>

## Application Details

Application Notes:	Optimal working dilution should be determined by the investigator.
Restrictions:	For Research Use only

## Handling

Format:	Lyophilized
Reconstitution:	25 µL, 50 µL or 0.2 mL double distilled water (DDW), depending on the sample size.
Concentration:	0.75 mg/mL
Buffer:	Reconstituted antibody contains phosphate buffered saline (PBS), pH 7.4, 1 % BSA, 0.05 % Sodium azide.
Preservative:	Sodium azide
Precaution of Use:	This product contains Sodium azide: a POISONOUS AND HAZARDOUS SUBSTANCE which should be handled by trained staff only.
Storage:	RT, 4 °C, -20 °C
Storage Comment:	<p>Storage before reconstitution: The antibody ships as a lyophilized powder at room temperature. Upon arrival, it should be stored at -20°C.</p> <p>Storage after reconstitution: The reconstituted solution can be stored at 4°C for up to 1 week. For longer periods, small aliquots should be stored at -20°C. Avoid multiple freezing and thawing. Centrifuge all antibody preparations before use (10000 x g 5 min).</p>



Western Blotting

**Image 1.** Western blot analysis of rat brain lysate: - 1. Anti-B2 Bradykinin Receptor (BDKRB2) Antibody (ABIN7042968, ABIN7043942 and ABIN7043943), (1:1000).2. Anti-B2 Bradykinin Receptor (BDKRB2) Antibody, preincubated with B2 Bradykinin Receptor/BDKRB2 Blocking Peptide (#BLP-BR012).

Immunohistochemistry

**Image 2.** Expression of B2 bradykinin receptor in mouse spinal cord - Immunohistochemical staining of mouse spinal cord using Anti-B2 Bradykinin Receptor (BDKRB2) Antibody (ABIN7042968, ABIN7043942 and ABIN7043943). A. BKR2 (red) appears in several spinal cord neurons (triangles). B. Parvalbumin (green) appears in neurons. C. Merge of BKR2 and parvalbumin shows co-expression in several neurons (triangles) but not all (arrow in C). DAPI is used as the counterstain.