

[Go to Product page](#)

Datasheet for ABIN7042974

anti-MERTK antibody (Extracellular, N-Term)

5 Images

Overview

Quantity:	0.2 mL
Target:	MERTK
Binding Specificity:	AA 402-416, Extracellular, N-Term
Reactivity:	Human, Mouse, Rat
Host:	Rabbit
Clonality:	Polyclonal
Application:	Western Blotting (WB), Immunohistochemistry (IHC), Immunofluorescence (IF), Flow Cytometry (FACS)

Product Details

Immunogen:	Immunogen: Synthetic peptide Immunogen Sequence: (C)KPPIKRQDGELVGYR, corresponding to amino acid residues 402 - 416 of mouse MERTK
Isotype:	IgG
Characteristics:	Anti-MERTK (extracellular) Antibody (ABIN7042974, ABIN7045326 and ABIN7045327)) is a highly specific antibody directed against an epitope of the mouse protein. The antibody can be used in western blot, immunohistochemistry, and live cell flow cytometry. It has been designed to recognize MERTK from human, rat, and mouse samples.
Purification:	Affinity purified on immobilized antigen.

Target Details

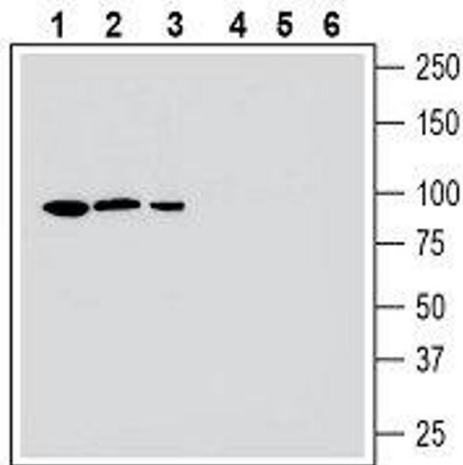
Target:	MERTK
Alternative Name:	MERTK (MERTK Products)
Background:	Alternative names: Receptor tyrosine kinase MerTK, C-Mer Proto-Oncogene Tyrosine Kinase, Mer, Proto-Oncogene C-Mer
Gene ID:	42648
NCBI Accession:	NM_006343
UniProt:	Q12866
Pathways:	RTK Signaling

Application Details

Application Notes:	Optimal working dilution should be determined by the investigator.
Restrictions:	For Research Use only

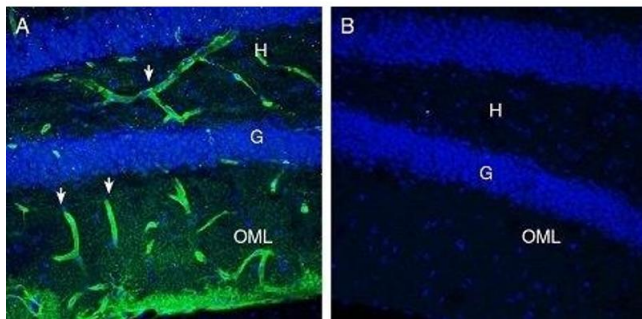
Handling

Format:	Lyophilized
Reconstitution:	25 µL, 50 µL or 0.2 mL double distilled water (DDW), depending on the sample size.
Concentration:	0.8 mg/mL
Buffer:	Reconstituted antibody contains phosphate buffered saline (PBS), pH 7.4, 1 % BSA, 0.05 % Sodium azide.
Preservative:	Sodium azide
Precaution of Use:	This product contains Sodium azide: a POISONOUS AND HAZARDOUS SUBSTANCE which should be handled by trained staff only.
Storage:	RT, 4 °C, -20 °C
Storage Comment:	<p>Storage before reconstitution: The antibody ships as a lyophilized powder at room temperature. Upon arrival, it should be stored at -20°C.</p> <p>Storage after reconstitution: The reconstituted solution can be stored at 4°C for up to 1 week. For longer periods, small aliquots should be stored at -20°C. Avoid multiple freezing and thawing. Centrifuge all antibody preparations before use (10000 x g 5 min).</p>



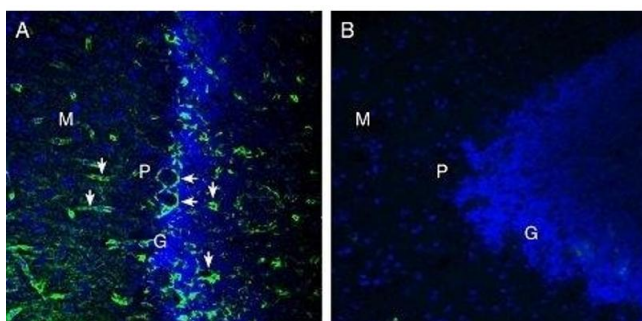
Western Blotting

Image 1. Western blot analysis human HepG2 hepatocellular carcinoma cell line lysate (lanes 1 and 4), mouse BV-2 microglia cell line lysate (lanes 2 and 5) and human MEG-01 megakaryoblastic leukemia cell line lysate (lanes 3 and 6): - 1-3. Anti-MERTK (extracellular) Antibody (ABIN7042974, ABIN7045326 and ABIN7045327), (1:400). 4-6. Anti-MERTK (extracellular) Antibody, preincubated with MERTK (extracellular) Blocking Peptide (#BLP-TR033).



Immunohistochemistry

Image 2. Expression of MERTK in mouse hippocampus - Immunohistochemical staining of perfusion-fixed frozen mouse brain sections with Anti-MERTK (extracellular) Antibody (ABIN7042974, ABIN7045326 and ABIN7045327), (1:300), followed by goat anti-rabbit-AlexaFluor-488 (green). A. MERTK staining (green) in the mouse hippocampal dentate gyrus region is detected in blood vessel profiles (arrows) in the hilus (H) and outer molecular layer (OML). B. Pre-incubation of the antibody with MERTK (extracellular) Blocking Peptide (#BLP-TR033), suppresses staining. Cell nuclei are stained with DAPI (blue). G = Granule layer.



Immunohistochemistry

Image 3. Expression of MERTK in rat cerebellum - Immunohistochemical staining of perfusion-fixed frozen rat brain sections with Anti-MERTK (extracellular) Antibody (ABIN7042974, ABIN7045326 and ABIN7045327), (1:300), followed by goat anti rabbit conjugated with Alexa 488 (green). A. MERTK immunoreactivity appears in in blood vessel profiles (vertical arrows) in the molecular (M), purkinje (P) and granule (G) layers and in basket profiles (horizontal arrows) around Purkinje soma. B. Pre-incubation of the antibody with MERTK (extracellular) Blocking Peptide (#BLP-TR033), suppresses staining. Cell nuclei are stained

with DAPI (blue). G= Granule layer, P = Purkinje layer, M = Molecular layer.

Please check the [product details page](#) for more images. Overall 5 images are available for ABIN7042974.