

Datasheet for ABIN7042975  
**anti-GPR77 antibody (Extracellular)**



[Go to Product page](#)

4 Images

## Overview

Quantity:	0.2 mL
Target:	GPR77
Binding Specificity:	AA 179-193, Extracellular
Reactivity:	Mouse
Host:	Rabbit
Clonality:	Polyclonal
Conjugate:	This GPR77 antibody is un-conjugated
Application:	Western Blotting (WB), Immunofluorescence (Cultured Cells) (IF (cc)), Immunohistochemistry (IHC)

## Product Details

Purpose:	A Rabbit Polyclonal antibody to C5aR2 (extracellular).
Immunogen:	Immunogen: Synthetic peptide Immunogen Sequence: (C)RLLQEHYPPRLV(S)G, corresponding to amino acid residues 179 - 193 of mouse C5aR2
Isotype:	IgG
Specificity:	Extracellular, 2nd loop.
Cross-Reactivity:	Mouse, Rat
Cross-Reactivity (Details):	Will not recognize Human C5aR2.
Predicted Reactivity:	Mouse - 14 out of 15 amino acid residues identical, Rat - 13 out of 15 amino acid residues

## Product Details

---

identical Will not recognize Human C5aR2

Characteristics: A rabbit polyclonal antibody to C5aR2 (extracellular).

Purification: Affinity purified on immobilized antigen.

## Target Details

---

Target: GPR77

Alternative Name: C5AR2 ([GPR77 Products](#))

Background: Complement Component 5a Receptor 2, C5L2, C5a Anaphylatoxin Chemotactic Receptor 2, G Protein-Coupled Receptor 77, GPR77, The complement system is a vital component of the innate immune system that play an important role in the immune responses to infectious organisms and tissue damages 1. The activation of the complement system is carried out through a proteolytic enzymes cascade generating various peptides and fragments 2. One of the most important component of the complement system is a protein named complement protein C5 3. Upon proteolytic cleavage of C5 two peptides are generated, C5a and C5b 4. C5a is known to be the most potent chemotactic factor in cells and responsible for the directed migration of cells involved in the immune response to infectious organisms and tissue damages 5. There are two different C5a receptors, C5aR1 (C5aR, CD88) and C5aR2 (C5L2, GPR77). C5aR1 is a member of the G-protein coupled receptors (GPCRs), and known to mediate the vast majority of C5a biological activity 6. In contrast C5aR2 does not exhibit any functional coupling to G proteins and its exact mechanism of action remains controversial 7. Expression of C5aR2 can be found in various tissues such as, bone marrow, spleen, lung and in immune cells such as myeloid cells and T cells 3.

Alternative names: Complement Component 5a Receptor 2, C5L2, C5a Anaphylatoxin Chemotactic Receptor 2, G Protein-Coupled Receptor 77, GPR77

Gene ID: 319430

NCBI Accession: [NM\\_018485](#)

UniProt: [Q8BW93](#)

## Application Details

---

Application Notes: Antigen preadsorption control: 1 µg peptide per 1 µg antibody

Application Dilutions Immunohistochemistry paraffin embedded sections ihc: 1:300

## Application Details

Application Dilutions Western blot wb: 1:400

Comment: Negative Control: (ABIN7235442)  
Blocking Peptide: (ABIN7235442)

Restrictions: For Research Use only

## Handling

Format: Lyophilized

Reconstitution: Reconstitute with double distilled water (DDW) to a concentration of 1.0 mg/mL.

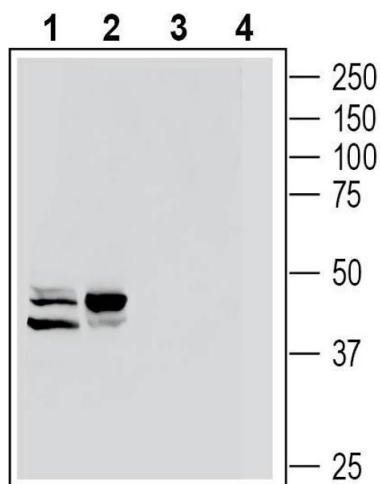
Concentration: 1 mg/mL

Buffer: PBS pH 7.4

Storage: 4 °C, -20 °C

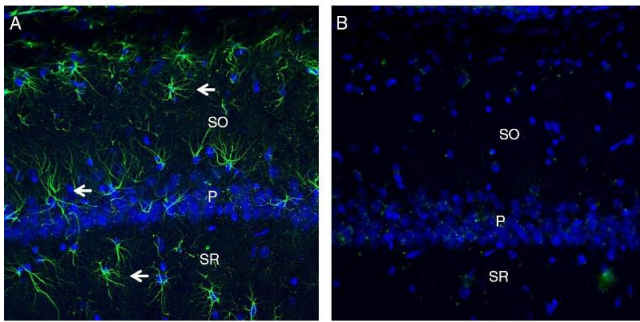
Storage Comment: Storage before reconstitution: The antibody ships as a lyophilized powder at room temperature. Upon arrival, it should be stored at -20°C.  
Storage after reconstitution: The reconstituted solution can be stored at 4°C for up to 1 week. For longer periods, small aliquots should be stored at -20°C. Avoid multiple freezing and thawing. Centrifuge all antibody preparations before use (10000 x g 5 min).

## Images



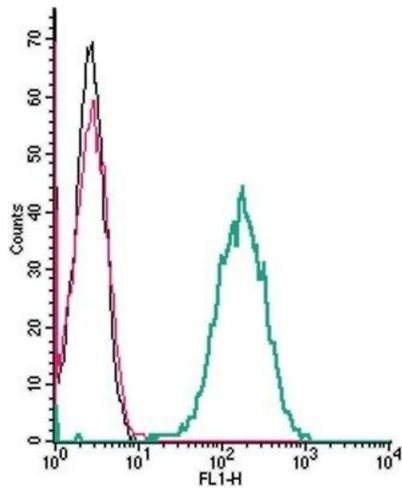
### Western Blotting

**Image 1.** Western blot analysis of mouse J774 macrophage cell line lysate (lanes 1 and 3) and mouse M1 myeloid leukemia cell line lysate (lanes 2 and 4): - 1-2. Anti-C5aR2 (extracellular) Antibody (ABIN7042975, ABIN7043930 and ABIN7043931), (1:400). 3-4. Anti-C5aR2 (extracellular) Antibody, preincubated with C5aR2 (extracellular) Blocking Peptide (BLP-AR034).



### Immunohistochemistry

**Image 2.** Expression of C5aR2 in rat hippocampus. - Immunohistochemical staining of perfusion-fixed frozen rat brain sections with Anti-C5aR2 (extracellular) Antibody (ABIN7042975, ABIN7043930 and ABIN7043931), (1: 300), followed by goat anti-rabbit-AlexaFluor-488. A. Staining in the hippocampal CA1 region, showed C5aR2 immunoreactivity (green) in glial profiles (arrows). B. Pre-incubation of the antibody with C5aR2 (extracellular) Blocking Peptide (BLP-AR034), suppressed staining. Cell nuclei are stained with DAPI (blue). P = pyramidal layer, SO = stratum oriens, SR = stratum radiatum.



### Flow Cytometry

**Image 3.** Cell surface detection of C5aR2 by indirect flow cytometry in live intact mouse J774 macrophage cell line: (black line) Cells.(red line) Cells + goat-anti-rabbit-FITC.(green line) Cells + Anti-C5aR2 (extracellular) Antibody (ABIN7042975, ABIN7043930 and ABIN7043931), (2.5 µg) + goat-anti-rabbit-FITC.

Please check the [product details page](#) for more images. Overall 4 images are available for ABIN7042975.