

Datasheet for ABIN7042979
anti-CALCRL antibody (C-Term, Intracellular)



[Go to Product page](#)

6 Images

Overview

Quantity:	0.2 mL
Target:	CALCRL
Binding Specificity:	AA 522-536, C-Term, Intracellular
Reactivity:	Human, Mouse, Rat
Host:	Rabbit
Clonality:	Polyclonal
Conjugate:	This CALCRL antibody is un-conjugated
Application:	Western Blotting (WB), Immunohistochemistry (IHC), Flow Cytometry (FACS)

Product Details

Immunogen:	<p>Immunogen: Synthetic peptide</p> <p>Immunogen Sequence: (C)EQMQKVRGFR(S)GKKS, corresponding to amino acid residues 522 - 536 of mouse OCTN1</p>
Isotype:	IgG
Characteristics:	<p>Anti-CRLR/CALCRL (extracellular) Antibody (ABIN7042979, ABIN7044198 and ABIN7044199) is a highly specific antibody directed against an epitope of the human protein. The antibody can be used in western blot, immunohistochemistry and indirect live cell flow cytometry. It has been designed to recognize CRLR from human, rat, and mouse samples.</p>
Purification:	Affinity purified on immobilized antigen.

Target Details

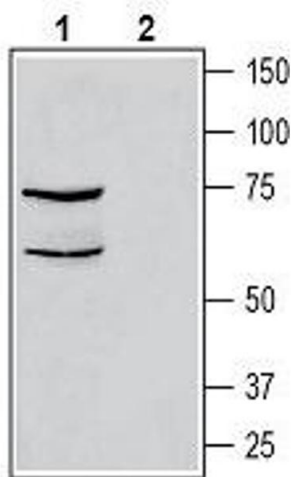
Target:	CALCRL
Alternative Name:	CRLR/CALCRL (CALCRL Products)
Background:	Alternative names: Calcitonin Receptor-Like Receptor, Calcitonin Gene-Related Peptide Type 1 Receptor, CRL, CGRPR
Gene ID:	42648
NCBI Accession:	NM_005795
UniProt:	Q16602
Pathways:	cAMP Metabolic Process

Application Details

Application Notes:	Optimal working dilution should be determined by the investigator.
Restrictions:	For Research Use only

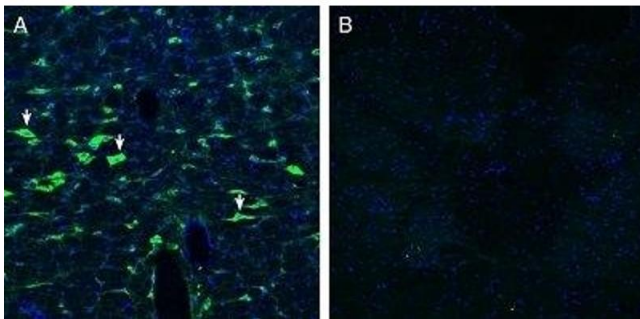
Handling

Format:	Lyophilized
Reconstitution:	25 μ L, 50 μ L or 0.2 mL double distilled water (DDW), depending on the sample size.
Concentration:	0.8 mg/mL
Buffer:	Reconstituted antibody contains phosphate buffered saline (PBS), pH 7.4, 1 % BSA, 0.05 % Sodium azide.
Preservative:	Sodium azide
Precaution of Use:	This product contains Sodium azide: a POISONOUS AND HAZARDOUS SUBSTANCE which should be handled by trained staff only.
Storage:	RT, 4 °C, -20 °C
Storage Comment:	Storage before reconstitution: The antibody ships as a lyophilized powder at room temperature. Upon arrival, it should be stored at -20°C. Storage after reconstitution: The reconstituted solution can be stored at 4°C for up to 1 week. For longer periods, small aliquots should be stored at -20°C. Avoid multiple freezing and thawing. Centrifuge all antibody preparations before use (10000 x g 5 min).



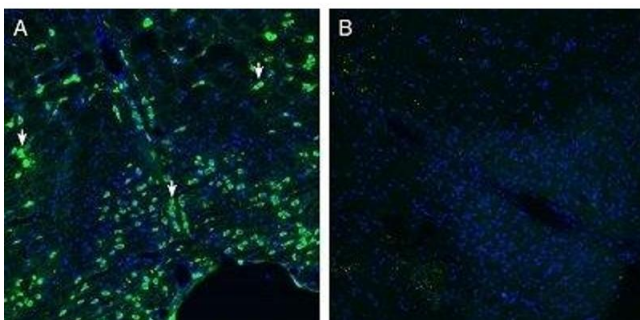
Western Blotting

Image 1. Western blot analysis of human THP-1 monocytic leukemia cell line lysate: - 1. Anti-CRLR/CALCRL (extracellular) Antibody (ABIN7042979, ABIN7044198 and ABIN7044199), (1:200). 2. Anti-CRLR/CALCRL (extracellular) Antibody, preincubated with CRLR/CALCRL (extracellular) Blocking Peptide (#BLP-CR060).



Immunohistochemistry

Image 2. Expression of Calcitonin Receptor-Like Receptor in rat brain stem - Immunohistochemical staining of perfusion-fixed frozen rat brain sections with Anti-CRLR/CALCRL (extracellular) Antibody (ABIN7042979, ABIN7044198 and ABIN7044199), (1:200), followed by goat anti-rabbit-AlexaFluor-488. A. CRLR staining (green) in the Raphe Magnus region is detected in neurons (arrows). B. Pre-incubation of the antibody with CRLR/CALCRL (extracellular) Blocking Peptide (#BLP-CR060), suppresses staining. Cell nuclei are stained with DAPI (blue).



Immunohistochemistry

Image 3. Expression of Calcitonin Receptor-Like Receptor in mouse brain stem - Immunohistochemical staining of perfusion-fixed frozen mouse brain sections with Anti-CRLR/CALCRL (extracellular) (extracellular) Antibody (ABIN7042979, ABIN7044198 and ABIN7044199), (1:200), followed by goat anti-rabbit-AlexaFluor-488. A. CRLR staining (green) in the Raphe Magnus region is detected in (green) in neurons (arrows). B. Pre-incubation of the antibody with CRLR/CALCRL (extracellular) Blocking Peptide (#BLP-CR060), suppresses staining. Cell nuclei are stained with DAPI (blue).

Please check the [product details page](#) for more images. Overall 6 images are available for ABIN7042979.