

Datasheet for ABIN7043011
anti-CHERP antibody (Cytosolic)

2 Images

[Go to Product page](#)

Overview

Quantity:	50 µL
Target:	CHERP
Binding Specificity:	AA 669-684, Cytosolic
Reactivity:	Human, Mouse, Rat
Host:	Rabbit
Clonality:	Polyclonal
Conjugate:	This CHERP antibody is un-conjugated
Application:	Western Blotting (WB), Immunohistochemistry (IHC), Immunofluorescence (IF)

Product Details

Immunogen:	Immunogen: Synthetic peptide
	Immunogen Sequence: (C)KLEDHEYKPLDPKDIR, corresponding to amino acid residues 669-684 of mouse CHERP
Isotype:	IgG
Characteristics:	Anti-CHERP Antibody (ABIN7043011, ABIN7044119 and ABIN7044120)) is a highly specific antibody directed against an epitope of the mouse protein. The antibody can be used in western blot and immunohistochemistry applications. It has been designed to recognize CHERP from human, rat, and mouse samples.
Purification:	Affinity purified on immobilized antigen.

Target Details

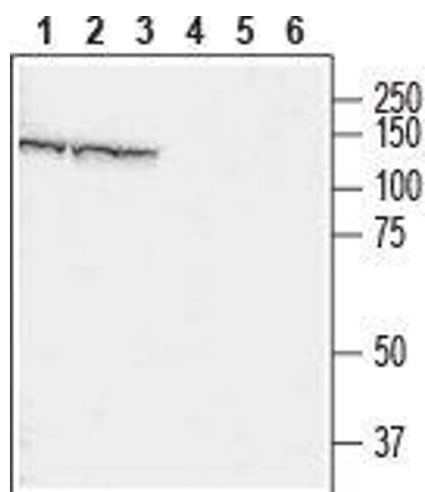
Target:	CHERP
Alternative Name:	CHERP (CHERP Products)
Background:	Alternative names: CHERP, Calcium homeostasis endoplasmic reticulum protein, SR-related CTD-associated factor 6, SCAF6
Gene ID:	27967
NCBI Accession:	NM_006387
UniProt:	Q8CGZ0

Application Details

Application Notes:	Optimal working dilution should be determined by the investigator.
Restrictions:	For Research Use only

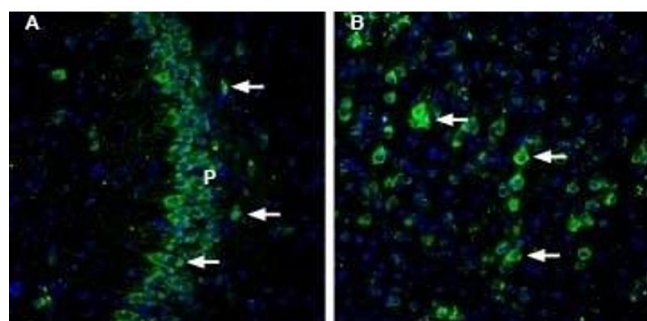
Handling

Format:	Lyophilized
Reconstitution:	25 µL, 50 µL or 0.2 mL double distilled water (DDW), depending on the sample size.
Concentration:	0.8 mg/mL
Buffer:	Reconstituted antibody contains phosphate buffered saline (PBS), pH 7.4, 1 % BSA, 0.05 % Sodium azide.
Preservative:	Sodium azide
Precaution of Use:	This product contains Sodium azide: a POISONOUS AND HAZARDOUS SUBSTANCE which should be handled by trained staff only.
Storage:	RT, 4 °C, -20 °C
Storage Comment:	<p>Storage before reconstitution: The antibody ships as a lyophilized powder at room temperature. Upon arrival, it should be stored at -20°C.</p> <p>Storage after reconstitution: The reconstituted solution can be stored at 4°C for up to 1 week. For longer periods, small aliquots should be stored at -20°C. Avoid multiple freezing and thawing. Centrifuge all antibody preparations before use (10000 x g 5 min).</p>



Western Blotting

Image 1. Western blot analysis of rat brain (lanes 1 and 4), mouse brain (lanes 2 and 5) and mouse C2C12 muscle myoblast cell line (lanes 3 and 6) lysates: - 1-3. Anti-CHERP Antibody (ABIN7043011, ABIN7044119 and ABIN7044120), (1:1500). 4-6. Anti-CHERP Antibody, preincubated with CHERP Blocking Peptide (#BLP-CC330).



Immunohistochemistry

Image 2. Expression of CHERP in mouse brain - Immunohistochemical staining of mouse brain sections using Anti-CHERP Antibody (ABIN7043011, ABIN7044119 and ABIN7044120). A. In mouse hippocampal CA3 region, CHERP immunoreactivity (green) appears in neurons (arrows) of CA3 pyramidal layer (P). B. In parietal cortex, CHERP staining (green) is detected in neurons (arrows). Nuclei are demonstrated using DAPI as the counterstain (blue).