

Datasheet for ABIN7043013

**anti-CALHM1 antibody (C-Term, Intracellular)**[Go to Product page](#)**2** Images

## Overview

Quantity:	50 µL
Target:	CALHM1
Binding Specificity:	AA 252-265, C-Term, Intracellular
Reactivity:	Human, Rat, Mouse
Host:	Rabbit
Clonality:	Polyclonal
Conjugate:	This CALHM1 antibody is un-conjugated
Application:	Western Blotting (WB), Immunohistochemistry (IHC), Immunofluorescence (IF)

## Product Details

Immunogen:	Immunogen: Synthetic peptide Immunogen Sequence: (C)EAMNHDLELGHTHG, corresponding to amino acid residues 252-265 of human CALHM1
Isotype:	IgG
Characteristics:	Anti-CALHM1 Antibody (ABIN7043013, ABIN7044044 and ABIN7044045)) is a highly specific antibody directed against an epitope of the human calcium homeostasis modulator protein 1. The antibody can be used in western blot and immunohistochemistry applications. It has been designed to recognize CALHM1 from rat, mouse and human samples.
Purification:	Affinity purified on immobilized antigen.

## Target Details

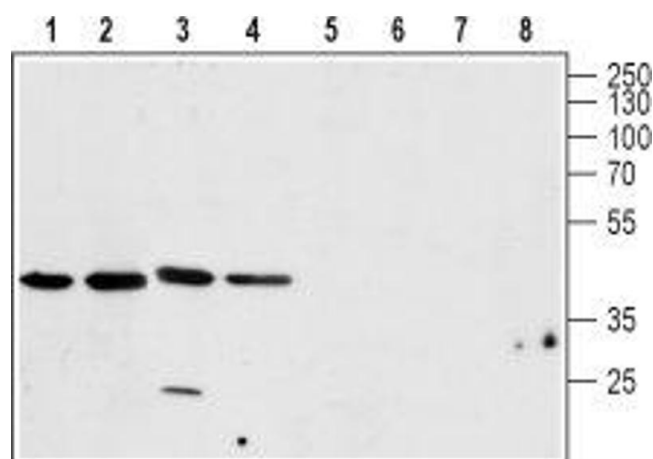
Target:	CALHM1
Alternative Name:	CALHM1 ( <a href="#">CALHM1 Products</a> )
Background:	Alternative names: CALHM1, Calcium homeostasis modulator 1, FAM26C
Gene ID:	255022
NCBI Accession:	<a href="#">NM_001001412</a>
UniProt:	<a href="#">Q8IU99</a>

## Application Details

Application Notes:	Optimal working dilution should be determined by the investigator.
Restrictions:	For Research Use only

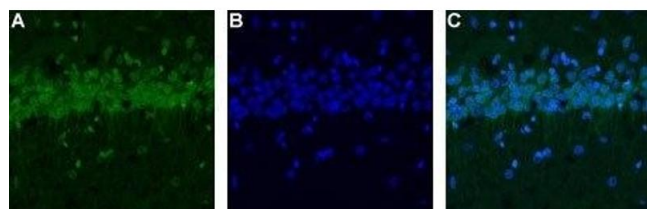
## Handling

Format:	Lyophilized
Reconstitution:	25 µL, 50 µL or 0.2 mL double distilled water (DDW), depending on the sample size.
Concentration:	0.8 mg/mL
Buffer:	Reconstituted antibody contains phosphate buffered saline (PBS), pH 7.4, 1 % BSA, 0.05 % Sodium azide.
Preservative:	Sodium azide
Precaution of Use:	This product contains Sodium azide: a POISONOUS AND HAZARDOUS SUBSTANCE which should be handled by trained staff only.
Storage:	RT, 4 °C, -20 °C
Storage Comment:	<p>Storage before reconstitution: The antibody ships as a lyophilized powder at room temperature. Upon arrival, it should be stored at -20°C.</p> <p>Storage after reconstitution: The reconstituted solution can be stored at 4°C for up to 1 week. For longer periods, small aliquots should be stored at -20°C. Avoid multiple freezing and thawing. Centrifuge all antibody preparations before use (10000 x g 5 min).</p>



### Western Blotting

**Image 1.** Western blot analysis of rat brain (lanes 1 and 5), mouse brain (lanes 2 and 6), human U-87 MG brain glioblastoma cell line (lanes 3 and 7) and rat C6 brain glioma cell line (lanes 4 and 8) lysates: - 1-4. Anti-CALHM1 Antibody (ABIN7043013, ABIN7044044 and ABIN7044045), (1:200). 5-8. Anti-CALHM1 Antibody, preincubated with CALHM1 Blocking Peptide (#BLP-CC101).



### Immunohistochemistry

**Image 2.** Expression of CALHM1 in rat hippocampus - Immunohistochemical staining of rat hippocampus using Anti-CALHM1 Antibody (ABIN7043013, ABIN7044044 and ABIN7044045). A. Staining of CALHM1 appears only in the hippocampal CA1 pyramidal layer (green). B. Nuclear staining using DAPI as the counterstain (blue). C. Merge of A and B.