

Datasheet for ABIN7043018
anti-CASR antibody (Extracellular, N-Term)[Go to Product page](#)

4 Images

Overview

Quantity:	25 µL
Target:	CASR
Binding Specificity:	AA 216-229, Extracellular, N-Term
Reactivity:	Human, Mouse, Rat
Host:	Rabbit
Clonality:	Polyclonal
Application:	Western Blotting (WB), Immunohistochemistry (IHC), Immunofluorescence (IF), Immunocytochemistry (ICC), Flow Cytometry (FACS), Live Cell Imaging (LCI)

Product Details

Immunogen:	Immunogen: Synthetic peptide Immunogen Sequence: (C)DDYG RPGIE KFREE, corresponding to amino acid residues 216-229 of human CaSR
Isotype:	IgG
Characteristics:	Anti-Calcium Sensing Receptor (extracellular) Antibody (ABIN7043018, ABIN7044161 and ABIN7044162)) is a highly specific antibody directed against an epitope of the human CaSR. The antibody can be used in western blot, immunohistochemistry, indirect flow cytometry, and immunocytochemistry, and live cell imaging applications. It has been designed to recognize CaSR from human, rat, and mouse samples.
Purification:	Affinity purified on immobilized antigen.

Target Details

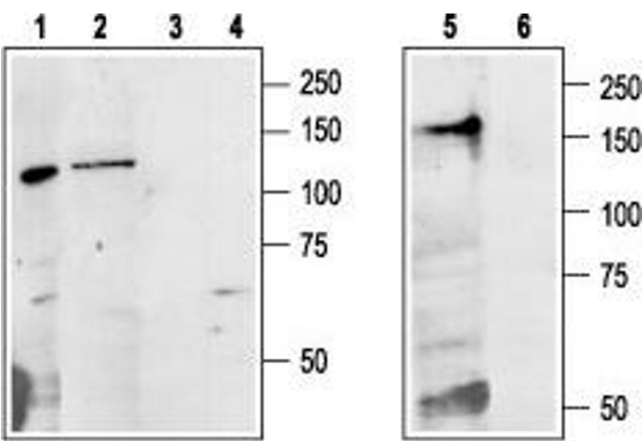
Target:	CASR
Alternative Name:	Calcium Sensing Receptor (CASR Products)
Background:	Alternative names: Calcium Sensing Receptor, CaSR, Extracellular calcium-sensing receptor, Parathyroid cell calcium-sensing receptor 1, PCaR1, GPRC2A
Gene ID:	846
NCBI Accession:	NM_000388
UniProt:	P41180
Pathways:	Positive Regulation of Peptide Hormone Secretion , Carbohydrate Homeostasis

Application Details

Application Notes:	Optimal working dilution should be determined by the investigator.
Restrictions:	For Research Use only

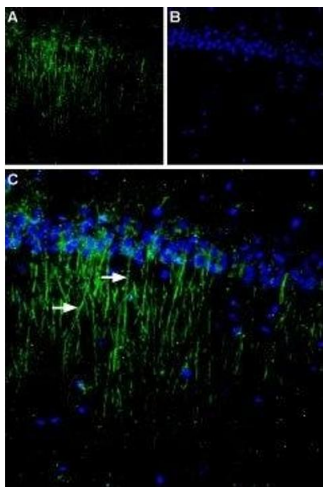
Handling

Format:	Lyophilized
Reconstitution:	25 µL, 50 µL or 0.2 mL double distilled water (DDW), depending on the sample size.
Concentration:	0.75 mg/mL
Buffer:	Reconstituted antibody contains phosphate buffered saline (PBS), pH 7.4, 1 % BSA, 0.05 % Sodium azide.
Preservative:	Sodium azide
Precaution of Use:	This product contains Sodium azide: a POISONOUS AND HAZARDOUS SUBSTANCE which should be handled by trained staff only.
Storage:	RT, 4 °C, -20 °C
Storage Comment:	<p>Storage before reconstitution: The antibody ships as a lyophilized powder at room temperature. Upon arrival, it should be stored at -20°C.</p> <p>Storage after reconstitution: The reconstituted solution can be stored at 4°C for up to 1 week. For longer periods, small aliquots should be stored at -20°C. Avoid multiple freezing and thawing. Centrifuge all antibody preparations before use (10000 x g 5 min).</p>



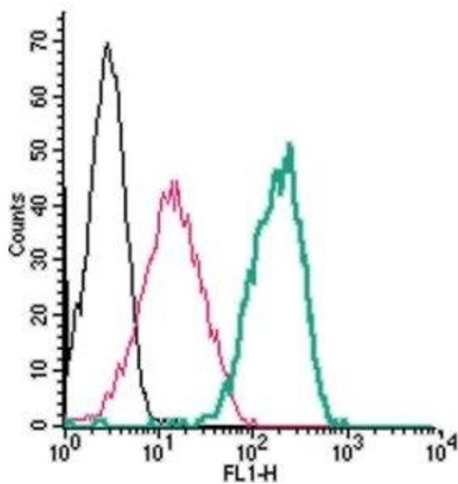
Western Blotting

Image 1. Western blot analysis of Colo205 (lanes 1 and 3), rat liver (lanes 2 and 4) and mouse kidney (lanes 5 and 6) lysates: - 1,2,5. Anti-Calcium Sensing Receptor (extracellular) Antibody (ABIN7043018, ABIN7044161 and ABIN7044162), (1:200).3,4,6. Anti-Calcium Sensing Receptor (extracellular) Antibody, preincubated with Calcium Sensing Receptor (extracellular) Blocking Peptide (#BLP-CR004).



Immunohistochemistry

Image 2. Expression of CaSR in rat brain - Immunohistochemical staining of rat hippocampal CA1 region using Anti-Calcium Sensing Receptor (extracellular) Antibody (ABIN7043018, ABIN7044161 and ABIN7044162). A. CaSR staining appears in the soma and apical dendrites of CA1 pyramidal neurons (arrows). B. Nuclear staining using DAPI as the counterstain. C. Merge image of A and B panels



Flow Cytometry

Image 3. Cell surface detection of Calcium Sensing Receptor by indirect flow cytometry in live intact human THP-1 monocytic leukemia cells:(black line) Cells. (red line) Cells + goat-anti-rabbit-FITC (green line) Cells + Anti-Calcium Sensing Receptor (extracellular) Antibody (ABIN7043018, ABIN7044161 and ABIN7044162), (2.5 µg) + goat-anti-rabbit-FITC

Please check the [product details page](#) for more images. Overall 4 images are available for ABIN7043018.