

Datasheet for ABIN7043026
anti-CNR2 antibody (Extracellular, N-Term)[Go to Product page](#)

3 Images

Overview

Quantity:	25 µL
Target:	CNR2
Binding Specificity:	AA 11-24, Extracellular, N-Term
Reactivity:	Human
Host:	Rabbit
Clonality:	Polyclonal
Conjugate:	This CNR2 antibody is un-conjugated
Application:	Western Blotting (WB), Flow Cytometry (FACS), Immunofluorescence (IF), Immunocytochemistry (ICC), Live Cell Imaging (LCI)

Product Details

Immunogen:	Immunogen: Synthetic peptide Immunogen Sequence: (C)NGSKDGLDSNPMKD, corresponding to amino acid residues 11-24 of human CB2 receptor
Isotype:	IgG
Cross-Reactivity (Details):	Not recommended to use with rat and mouse samples.
Characteristics:	Anti-Human Cannabinoid Receptor 2 (extracellular) Antibody is directed against an extracellular epitope of the human CB2 receptor. Anti-Human Cannabinoid Receptor 2 (extracellular) Antibody (ABIN7043026, ABIN7044159 and ABIN7044160)) can be used in western blot, immunohistochemistry and live cell imaging applications. It has been designed to recognize CB2 from human samples. The antibody is not recommended for use on rat and mouse

Product Details

samples.

Purification: Affinity purified on immobilized antigen.

Target Details

Target: CNR2

Alternative Name: Cannabinoid Receptor 2 ([CNR2 Products](#))

Background: Alternative names: Cannabinoid Receptor 2, CB2, CNR2

Gene ID: 1269

NCBI Accession: [NM_001841](#)

UniProt: [P34972](#)

Application Details

Application Notes: Optimal working dilution should be determined by the investigator.

Restrictions: For Research Use only

Handling

Format: Lyophilized

Reconstitution: 25 µL, 50 µL or 0.2 mL double distilled water (DDW), depending on the sample size.

Concentration: 0.8 mg/mL

Buffer: Reconstituted antibody contains phosphate buffered saline (PBS), pH 7.4, 1 % BSA, 0.05 % Sodium azide.

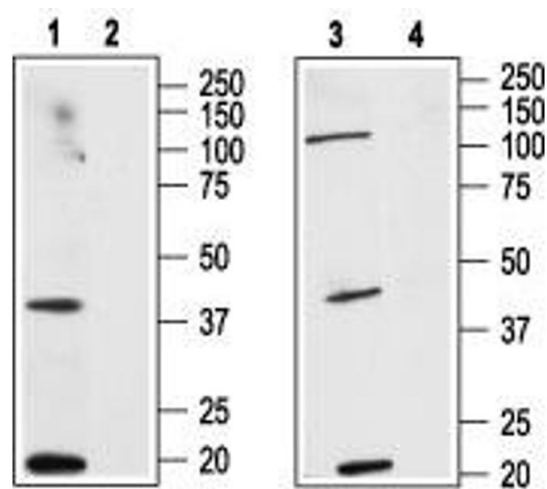
Preservative: Sodium azide

Precaution of Use: This product contains Sodium azide: a POISONOUS AND HAZARDOUS SUBSTANCE which should be handled by trained staff only.

Storage: RT, 4 °C, -20 °C

Storage Comment: Storage before reconstitution: The antibody ships as a lyophilized powder at room temperature. Upon arrival, it should be stored at -20°C.

Storage after reconstitution: The reconstituted solution can be stored at 4°C for up to 1 week. For longer periods, small aliquots should be stored at -20°C. Avoid multiple freezing and thawing. Centrifuge all antibody preparations before use (10000 x g 5 min).



Western Blotting

Image 1. Western blot analysis of human HL-60 acute promyelocytic leukemia cell line lysate (lanes 1 and 2) and human MCF-7 breast adenocarcinoma cell line lysate (lanes 3 and 4): - 1,3. Anti-Human Cannabinoid Receptor 2 (extracellular) Antibody (ABIN7043026, ABIN7044159 and ABIN7044160), (1:200). 2,4. Anti-Human Cannabinoid Receptor 2 (extracellular) Antibody, preincubated with Human Cannabinoid Receptor 2 (extracellular) Blocking Peptide (#BLP-CR003).

Immunocytochemistry

Image 2. Expression of CB2 receptor in human LNCaP - Immunocytochemical staining of living human prostate carcinoma cells (LNCaP). A. Extracellular staining of cells with Anti-Human Cannabinoid Receptor 2 (extracellular) Antibody (ABIN7043026, ABIN7044159 and ABIN7044160), (1:50), followed by goat-anti-rabbit-AlexaFluor-488 secondary antibody. B. Nuclear staining of LNCaP cells with Hoechst 33342. C. Live intact LNCaP cells.

Flow Cytometry

Image 3. Cell surface detection of CB2 receptor in live intact human HL-60 promyelocytic leukaemia cells: (black line) Cells + goat-anti-rabbit-FITC alone. (green line) Cells + Anti-Human Cannabinoid Receptor 2 (extracellular) Antibody (ABIN7043026, ABIN7044159 and ABIN7044160), (5 μ g) + goat-anti-rabbit-FITC.

