



[Go to Product page](#)

Datasheet for ABIN7043036

anti-CCR9 antibody (2nd Extracellular Loop)

2 Images

Overview

Quantity:	50 µL
Target:	CCR9
Binding Specificity:	2nd Extracellular Loop, AA 205-218
Reactivity:	Human, Mouse, Rat
Host:	Rabbit
Clonality:	Polyclonal
Application:	Western Blotting (WB), Flow Cytometry (FACS)

Product Details

Immunogen:	Immunogen: Synthetic peptide Immunogen Sequence: (C)DESTKLKSAVLTLK, corresponding to amino acid residues 205-218 of human CCR9
Isotype:	IgG
Characteristics:	Anti-CCR9 (extracellular) Antibody (ABIN7043036, ABIN7044177 and ABIN7044178)) is a highly specific antibody directed against an epitope of the human protein. The antibody can be used in western blot and indirect live cell flow cytometry applications. It has been designed to recognize CCR9 from rat, mouse, and human samples.
Purification:	Affinity purified on immobilized antigen.

Target Details

Target:	CCR9
---------	------

Target Details

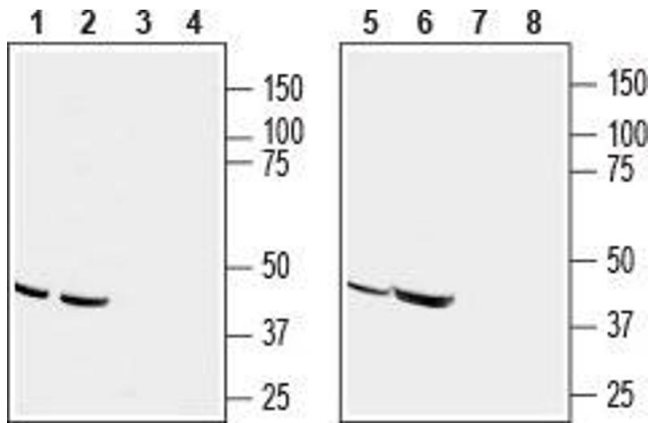
Alternative Name:	CCR9 (CCR9 Products)
Background:	Alternative names: CCR9, C-C chemokine receptor type 9, CC-CKR-9, G-protein coupled receptor 28, GPR28, GPR-9-6, CDw199
Gene ID:	10803
NCBI Accession:	NM_001256369
UniProt:	P51686

Application Details

Application Notes:	Optimal working dilution should be determined by the investigator.
Restrictions:	For Research Use only

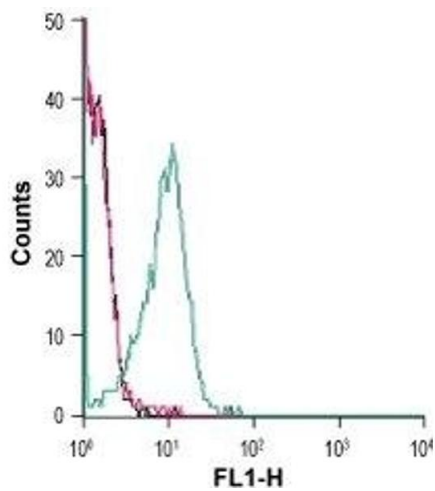
Handling

Format:	Lyophilized
Reconstitution:	25 µL, 50 µL or 0.2 mL double distilled water (DDW), depending on the sample size.
Concentration:	0.8 mg/mL
Buffer:	Reconstituted antibody contains phosphate buffered saline (PBS), pH 7.4, 1 % BSA, 0.05 % Sodium azide.
Preservative:	Sodium azide
Precaution of Use:	This product contains Sodium azide: a POISONOUS AND HAZARDOUS SUBSTANCE which should be handled by trained staff only.
Storage:	RT, 4 °C, -20 °C
Storage Comment:	<p>Storage before reconstitution: The antibody ships as a lyophilized powder at room temperature. Upon arrival, it should be stored at -20°C.</p> <p>Storage after reconstitution: The reconstituted solution can be stored at 4°C for up to 1 week. For longer periods, small aliquots should be stored at -20°C. Avoid multiple freezing and thawing. Centrifuge all antibody preparations before use (10000 x g 5 min).</p>



Western Blotting

Image 1. Western blot analysis of human acute T cell leukemia (Jurkat) (lanes 1 and 3), human melanoma (MALME-3M) (lanes 2 and 4), human adenocarcinoma (HT-29) (lanes 5 and 7) and mouse T-cell lymphoma (TK-1) (lanes 6 and 8) cell line lysates: - 1,2,5,6. Anti-CCR9 (extracellular) Antibody (ABIN7043036, ABIN7044177 and ABIN7044178), (1:200).3,4,7,8. Anti-CCR9 (extracellular) Antibody, preincubated with CCR9 (extracellular) Blocking Peptide (#BLP-CR029).



Flow Cytometry

Image 2. Cell surface detection of CCR9 in live intact rat lymphoma, T-lymphocyte (C58) cells: (black line) Cells.(red line) Cells + goat-anti-rabbit-FITC.(green line) Cells + Anti-CCR9 (extracellular) Antibody (ABIN7043036, ABIN7044177 and ABIN7044178), (5 µg/0.5x10⁶ cells) + goat anti-rabbit-FITC.