

Datasheet for ABIN7043037

anti-CXCR1 antibody (Extracellular, N-Term)**2** Images[Go to Product page](#)

Overview

Quantity:	50 µL
Target:	CXCR1
Binding Specificity:	AA 2-16, Extracellular, N-Term
Reactivity:	Human
Host:	Rabbit
Clonality:	Polyclonal
Application:	Western Blotting (WB), Flow Cytometry (FACS)

Product Details

Immunogen:	Immunogen: Synthetic peptide Immunogen Sequence: (C)SNITDPQMW DFDDLN, corresponding to amino acid residues 2-16 of human CXCR1
Isotype:	IgG
Characteristics:	Anti-Human CXCR1 (extracellular) Antibody is directed against an extracellular epitope of the human CXCR1. Anti-Human CXCR1 (extracellular) Antibody (ABIN7043037 and ABIN7044163)) can be used for western blot and indirect flow cytometry applications. It has been designed to recognize human CXCR1.
Purification:	Affinity purified on immobilized antigen.

Target Details

Target:	CXCR1
---------	-------

Target Details

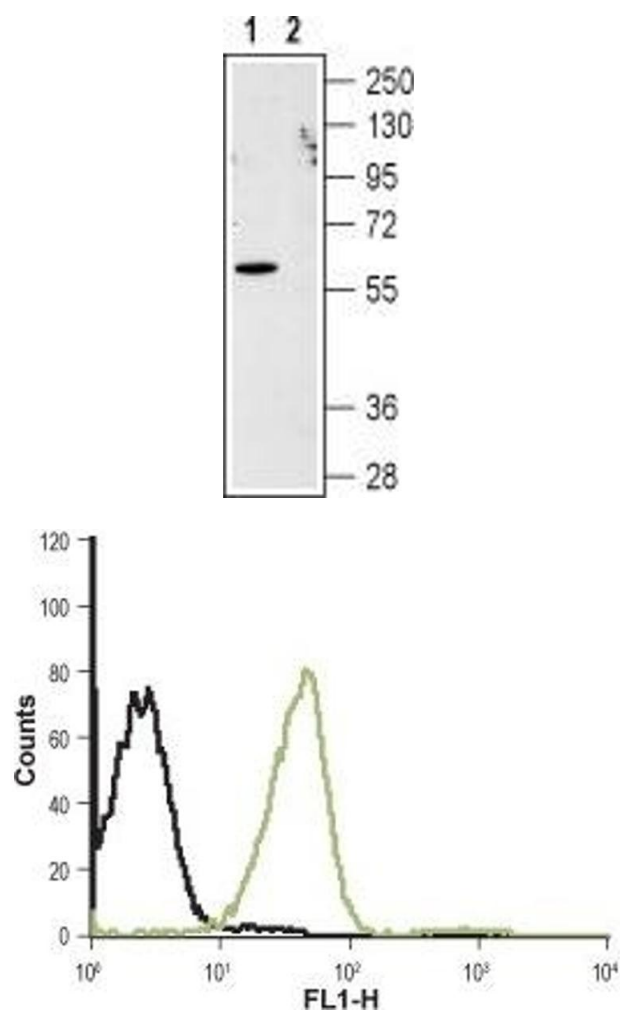
Alternative Name:	CXCR1 (CXCR1 Products)
Background:	Alternative names: CXCR1, C-X-C chemokine receptor type 1, Interleukin-8 receptor A, IL-8R A, IL8RA, IL-8 receptor type 1, CD181
Gene ID:	3577
NCBI Accession:	NM_000634
UniProt:	P25024
Pathways:	cAMP Metabolic Process

Application Details

Application Notes:	Optimal working dilution should be determined by the investigator.
Restrictions:	For Research Use only

Handling

Format:	Lyophilized
Reconstitution:	50 µL or 0.2 mL double distilled water (DDW), depending on the sample size.
Concentration:	0.75 mg/mL
Buffer:	Reconstituted antibody contains phosphate buffered saline (PBS), pH 7.4, 1 % BSA, 0.05 % Sodium azide.
Preservative:	Sodium azide
Precaution of Use:	This product contains Sodium azide: a POISONOUS AND HAZARDOUS SUBSTANCE which should be handled by trained staff only.
Storage:	RT, 4 °C, -20 °C
Storage Comment:	<p>Storage before reconstitution: The antibody ships as a lyophilized powder at room temperature. Upon arrival, it should be stored at -20°C.</p> <p>Storage after reconstitution: The reconstituted solution can be stored at 4°C for up to 1 week. For longer periods, small aliquots should be stored at -20°C. Avoid multiple freezing and thawing. Centrifuge all antibody preparations before use (10000 x g 5 min).</p>



Western Blotting

Image 1. Western blot analysis of CXCR1 in human Jurkat acute T cell leukemia cell lysate: - 1. Anti-Human CXCR1 (extracellular) Antibody (ABIN7043037 and ABIN7044163), (1:200). 2. Anti-Human CXCR1 (extracellular) Antibody, preincubated with Human CXCR1 (extracellular) Blocking Peptide (#BLP-CR011).

Flow Cytometry

Image 2. Cell surface detection of CXCR1 in Jurkat living cells: (black line) Unstained cells. (green line) Cells + Anti-Human CXCR1 (extracellular) Antibody (ABIN7043037 and ABIN7044163), (10 µg/5x10⁵ cells).