



[Go to Product page](#)

Datasheet for ABIN7043042

anti-CXCR5 antibody (Extracellular, N-Term)

3 Images

Overview

Quantity:	25 µL
Target:	CXCR5
Binding Specificity:	AA 23-38, Extracellular, N-Term
Reactivity:	Human
Host:	Rabbit
Clonality:	Polyclonal
Conjugate:	This CXCR5 antibody is un-conjugated
Application:	Western Blotting (WB), Flow Cytometry (FACS), Immunofluorescence (IF), Immunocytochemistry (ICC), Live Cell Imaging (LCI)

Product Details

Immunogen:	Immunogen: Synthetic peptide Immunogen Sequence: RLDNYNDTSLVENHLC, corresponding to amino acid residues 23-38 of human CXCR5
Isotype:	IgG
Cross-Reactivity (Details):	Will not recognize rat and mouse CXCR5.
Characteristics:	Anti-Human CXCR5 (extracellular) Antibody is directed against an epitope of the human CXCR5. Anti-Human CXCR5 (extracellular) Antibody (ABIN7043042, ABIN7044168 and ABIN7044169)) can be used in western blot, immunocytochemistry, and indirect flow cytometry applications. The antibody recognizes an extracellular epitope and is thus ideal for detecting the receptor in living cells. It has been designed to recognize CXCR5 from human samples only.

Product Details

Purification: Affinity purified on immobilized antigen.

Target Details

Target: CXCR5

Alternative Name: CXCR5 ([CXCR5 Products](#))

Background: Alternative names: CXCR5, C-X-C chemokine receptor type 5, Burkitt lymphoma receptor 1, BLR1, Monocyte-derived receptor 15, MDR15, CD185

Gene ID: 643

NCBI Accession: [NM_001716](#)

UniProt: [P32302](#)

Application Details

Application Notes: Optimal working dilution should be determined by the investigator.

Restrictions: For Research Use only

Handling

Format: Lyophilized

Reconstitution: 25 µL, 50 µL or 0.2 mL double distilled water (DDW), depending on the sample size.

Concentration: 0.85 mg/mL

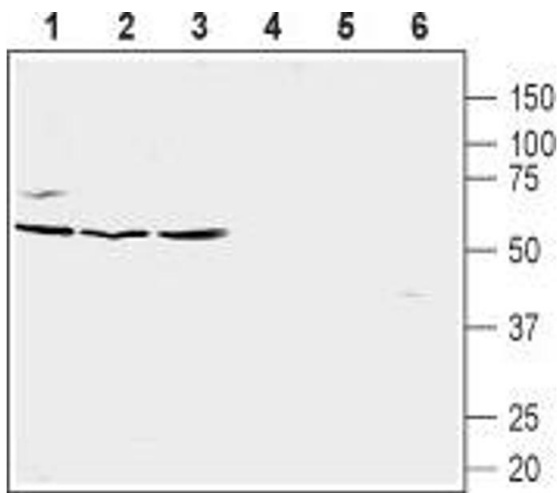
Buffer: Reconstituted antibody contains phosphate buffered saline (PBS), pH 7.4, 1 % BSA, 0.05 % Sodium azide.

Preservative: Sodium azide

Precaution of Use: This product contains Sodium azide: a POISONOUS AND HAZARDOUS SUBSTANCE which should be handled by trained staff only.

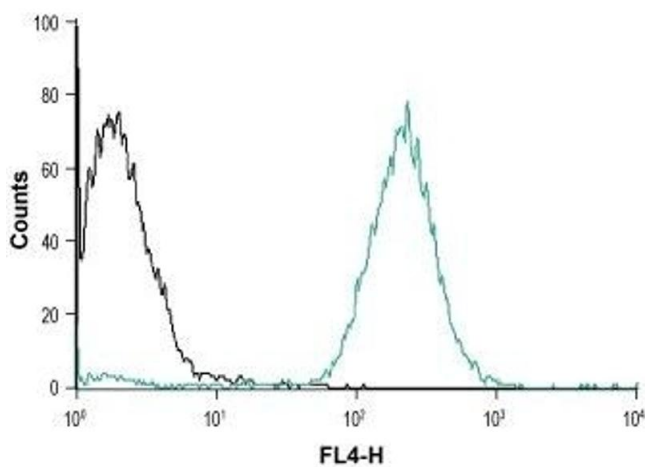
Storage: RT, 4 °C, -20 °C

Storage Comment: Storage before reconstitution: The antibody ships as a lyophilized powder at room temperature. Upon arrival, it should be stored at -20°C.
Storage after reconstitution: The reconstituted solution can be stored at 4°C for up to 1 week. For longer periods, small aliquots should be stored at -20°C. Avoid multiple freezing and thawing. Centrifuge all antibody preparations before use (10000 x g 5 min).



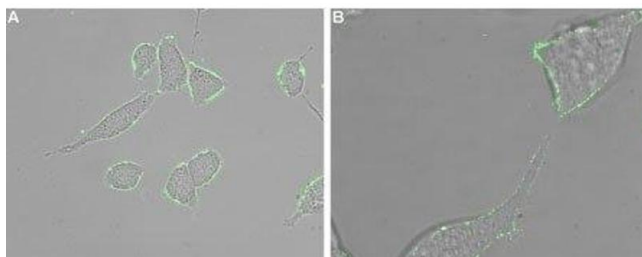
Western Blotting

Image 1. Western blot analysis of Burkitt's lymphoma (Raji) (lanes 1 and 4), human prostate carcinoma (LNCaP) (lanes 2 and 5) and human prostate carcinoma (PC-3) cell line lysates (lanes 3 and 6): - 1-3. Anti-Human CXCR5 (extracellular) Antibody (ABIN7043042, ABIN7044168 and ABIN7044169), (1:400). 4-6. Anti-Human CXCR5 (extracellular) Antibody, preincubated with Human CXCR5 (extracellular) Blocking Peptide (#BLP-CR015).



Flow Cytometry

Image 2. Cell surface detection of CXCR5 in human promyelocytic leukemia (HL-60) live intact cells: (black line) Unstained cells. (green line) Cells + Anti-Human CXCR5 (extracellular) Antibody (ABIN7043042, ABIN7044168 and ABIN7044169), (5 µg/0.5x 10⁶ cells).



Immunocytochemistry

Image 3. Expression of CXCR5 in human LNCaP cells - Cell surface detection of CXCR5 in intact living human prostate carcinoma (LNCaP) cells. A. Extracellular staining of cells using Anti-Human CXCR5 (extracellular) Antibody (ABIN7043042, ABIN7044168 and ABIN7044169), (green), (1:25) merged with live view of the cells (magnitude X40). B. Extracellular staining of LNCaP cells merged with live view of the cells (magnitude X100).