



Datasheet for ABIN7043046
anti-CX3CR1 antibody (Extracellular, N-Term)



[Go to Product page](#)

2 Images

Overview

Quantity:	50 µL
Target:	CX3CR1
Binding Specificity:	AA 6-19, Extracellular, N-Term
Reactivity:	Human
Host:	Rabbit
Clonality:	Polyclonal
Application:	Western Blotting (WB)

Product Details

Immunogen:	Immunogen: Synthetic peptide Immunogen Sequence: (C)ESVTENFEYDDLAE, corresponding to amino acid residues 6-19 of human CX3CR1
Isotype:	IgG
Cross-Reactivity (Details):	The antibody will not recognize the protein from rat or mouse samples.
Characteristics:	Anti-Human CX3CR1 (extracellular) Antibody (ABIN7043046, ABIN7044196 and ABIN7044197)) is a highly specific antibody directed against an epitope of human CX3C chemokine receptor 1. The antibody can be used in western blot and indirect flow cytometry applications. It has been designed to recognize CX3CR1 from human samples only. The antibody will not recognize the protein from rat or mouse samples.
Purification:	Affinity purified on immobilized antigen.

Target Details

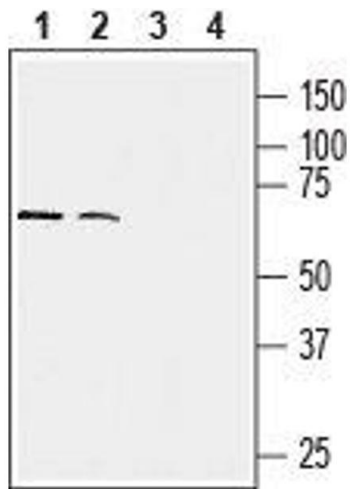
Target:	CX3CR1
Alternative Name:	CX3CR1 (CX3CR1 Products)
Background:	Alternative names: CX3CR1, CX3C chemokine receptor 1, C-X3-C CKR-1, C-X3-C motif chemokine receptor 1, GPR13, CMKBRL1, GPRV28, V28, G-protein coupled receptor 13, CCRL1, Beta chemokine receptor-like 1
Gene ID:	1524
NCBI Accession:	NM_002996
UniProt:	P49238
Pathways:	Cellular Response to Molecule of Bacterial Origin

Application Details

Application Notes:	Optimal working dilution should be determined by the investigator.
Restrictions:	For Research Use only

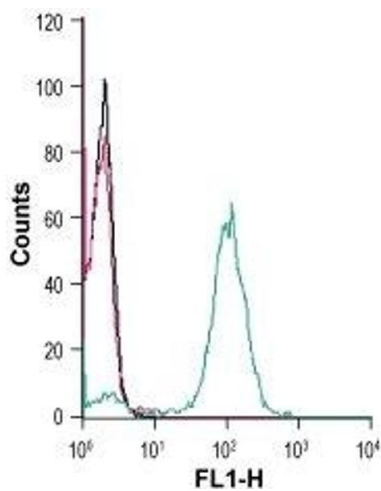
Handling

Format:	Lyophilized
Reconstitution:	25 µL, 50 µL or 0.2 mL double distilled water (DDW), depending on the sample size.
Concentration:	0.8 mg/mL
Buffer:	Reconstituted antibody contains phosphate buffered saline (PBS), pH 7.4, 1 % BSA, 0.05 % Sodium azide.
Preservative:	Sodium azide
Precaution of Use:	This product contains Sodium azide: a POISONOUS AND HAZARDOUS SUBSTANCE which should be handled by trained staff only.
Storage:	RT, 4 °C, -20 °C
Storage Comment:	Storage before reconstitution: The antibody ships as a lyophilized powder at room temperature. Upon arrival, it should be stored at -20°C. Storage after reconstitution: The reconstituted solution can be stored at 4°C for up to 1 week. For longer periods, small aliquots should be stored at -20°C. Avoid multiple freezing and thawing. Centrifuge all antibody preparations before use (10000 x g 5 min).



Western Blotting

Image 1. Western blot analysis of human NK-92MI natural killer cells (lanes 1 and 3) and human THP-1 acute monocytic leukemia (lanes 2 and 4) cell lysates: - 1,2. Anti-Human CX3CR1 (extracellular) Antibody (1:600), (ABIN7043046, ABIN7044196 and ABIN7044197).3,4. Anti-Human CX3CR1 (extracellular) Antibody, preincubated with Human CX3CR1 (extracellular) Blocking Peptide (#BLP-CR059).



Flow Cytometry

Image 2. Cell surface detection of CX3CR1 in human THP-1 monocytic leukemia cells:(black line) Cells.(red line) Cells + goat-anti-rabbit-FITC.(green line) Cells + Anti-Human CX3CR1 (extracellular) Antibody (ABIN7043046, ABIN7044196 and ABIN7044197) (2.5 µg/5x10⁵ cells) +FITC-conjugated goat anti-rabbit antibody.