



[Go to Product page](#)

Datasheet for ABIN7043048

anti-CX3CR1 antibody (Extracellular, N-Term) (FITC)

2 Images

Overview

Quantity:	50 µL
Target:	CX3CR1
Binding Specificity:	AA 7-20, Extracellular, N-Term
Reactivity:	Human
Host:	Rabbit
Clonality:	Polyclonal
Conjugate:	This CX3CR1 antibody is conjugated to FITC
Application:	Flow Cytometry (FACS)

Product Details

Immunogen:	Immunogen: Synthetic peptide Immunogen Sequence: Peptide (C)ELDLENFEYDDSAE, corresponding to amino acid residues 7-20 of mouse CX3CR1
Isotype:	IgG
Cross-Reactivity (Details):	The antibody will not recognize the protein from rat or mouse samples.
Characteristics:	A Rabbit Polyclonal Antibody to CX3CR1 Conjugated to the Fluorescent Dye FITC

Target Details

Target:	CX3CR1
Alternative Name:	CX3CR1 (CX3CR1 Products)

Target Details

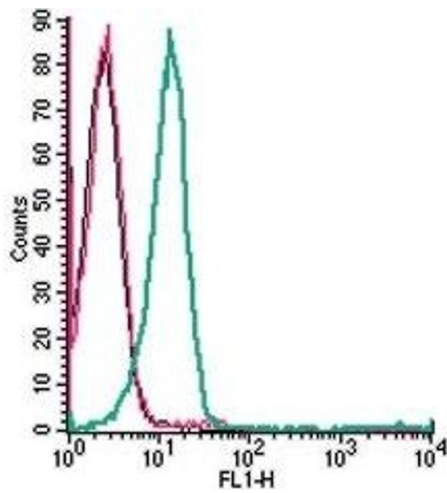
Background:	Alternative names: Fractalkine Receptor, CX3C chemokine receptor 1, C-X3-C CKR-1, C-X3-C motif chemokine receptor 1, GPR13, CMKBRL1, GPRV28, V28, G-protein coupled receptor 13, CCRL1, Beta chemokine receptor-like 1
Gene ID:	1524
NCBI Accession:	NM_001337
UniProt:	P49238
Pathways:	Cellular Response to Molecule of Bacterial Origin

Application Details

Application Notes:	Optimal working dilution should be determined by the investigator.
Restrictions:	For Research Use only

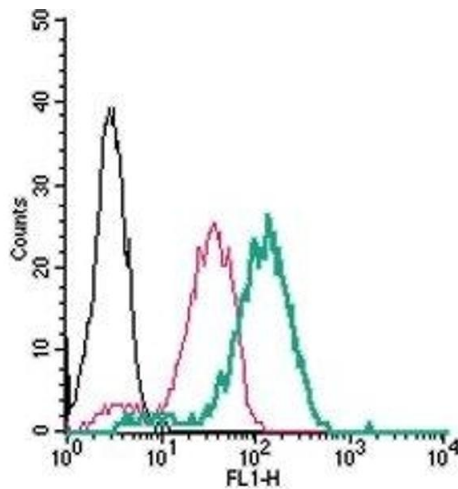
Handling

Format:	Lyophilized
Reconstitution:	50 µL double distilled water (DDW).
Concentration:	1 mg/mL
Buffer:	Reconstituted antibody contains phosphate buffered saline (PBS), pH 7.4, 1 % BSA, 0.05 % Sodium azide.
Preservative:	Sodium azide
Precaution of Use:	This product contains Sodium azide: a POISONOUS AND HAZARDOUS SUBSTANCE which should be handled by trained staff only.
Storage:	RT, 4 °C, -20 °C
Storage Comment:	<p>Storage before reconstitution: The antibody ships as a lyophilized powder at room temperature. Upon arrival, it should be stored at -20°C.</p> <p>Storage after reconstitution: The reconstituted solution can be stored at 4°C, protected from the light, for up to 1 week. For longer periods, small aliquots should be stored at -20°C. Avoid multiple freezing and thawing. Centrifuge all antibody preparations before use (10000 x g 5 min).</p>



Flow Cytometry

Image 1. Cell surface detection of CX3CR1 in live intact human Jurkat T-cell leukemia cells: (black line) Cells.(red line) Cells + Rabbit IgG isotype control-FITC.(green line) Cells + Anti-Human CX3CR1 (extracellular)-FITC Antibody (ABIN7043048, ABIN7045505, ABIN7045506 and ABIN7045507), (2.5 µg).



Flow Cytometry

Image 2. Cell surface detection of CX3CR1 in live intact human THP-1 monocytic leukemia cells: (black line) Cells.(red line) Cells + Rabbit IgG isotype control-FITC.(green line) Cells + Anti-Human CX3CR1 (extracellular)-FITC Antibody (ABIN7043048, ABIN7045505, ABIN7045506 and ABIN7045507), (2.5 µg).