

Datasheet for ABIN7043051
anti-CLCN2 antibody (C-Term, Intracellular)



[Go to Product page](#)

1 Image

Overview

Quantity:	50 µL
Target:	CLCN2
Binding Specificity:	AA 888-906, C-Term, Intracellular
Reactivity:	Human, Mouse, Rat
Host:	Rabbit
Clonality:	Polyclonal
Conjugate:	This CLCN2 antibody is un-conjugated
Application:	Western Blotting (WB), Immunohistochemistry (IHC), Immunofluorescence (IF), Immunocytochemistry (ICC)

Product Details

Immunogen:	Immunogen: Synthetic peptide Immunogen Sequence: RSRHGLPREGTPSDSDDKC, corresponding to amino acid residues 888-906 of rat CLC-2.
Isotype:	IgG
Characteristics:	Anti-CLC-2 (CLCN2) Antibody (ABIN7043051 and ABIN7044123)) is a highly specific antibody directed against an epitope of the rat protein. The antibody can be used in western blot, immunohistochemistry and immunocytochemistry applications. It has been designed to recognize CLC-2 channel from rat, mouse, and human samples.
Purification:	Affinity purified on immobilized antigen.

Target Details

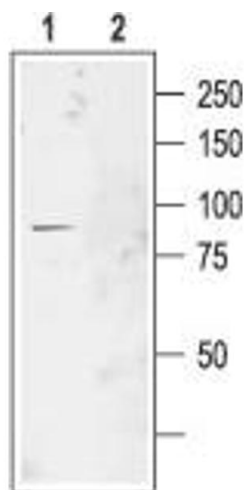
Target:	CLCN2
Alternative Name:	CLC-2 (CLCN2) (CLCN2 Products)
Background:	Alternative names: CLC-2 (CLCN2), Chloride channel 2, CLC2
Gene ID:	29232
NCBI Accession:	NM_001171087
UniProt:	P35525

Application Details

Application Notes:	Optimal working dilution should be determined by the investigator.
Restrictions:	For Research Use only

Handling

Format:	Lyophilized
Reconstitution:	50 µL or 0.2 mL double distilled water (DDW), depending on the sample size.
Concentration:	0.6 mg/mL
Buffer:	Reconstituted antibody contains phosphate buffered saline (PBS), pH 7.4, 1 % BSA, 5 % sucrose, 0.025 % Sodium azide.
Preservative:	Sodium azide
Precaution of Use:	This product contains Sodium azide: a POISONOUS AND HAZARDOUS SUBSTANCE which should be handled by trained staff only.
Storage:	RT, 4 °C, -20 °C
Storage Comment:	<p>Storage before reconstitution: The antibody ships as a lyophilized powder at room temperature. Upon arrival, it should be stored at -20°C.</p> <p>Storage after reconstitution: The reconstituted solution can be stored at 4°C for up to 1 week. For longer periods, small aliquots should be stored at -20°C. Avoid multiple freezing and thawing. Centrifuge all antibody preparations before use (10000 x g 5 min).</p>



Western Blotting

Image 1. Western blot analysis of rat brain membranes: -
1. Anti-CLC-2 (CLCN2) Antibody (ABIN7043051 and ABIN7044123), (1:200).2. Anti-CLC-2 (CLCN2) Antibody, preincubated with CLC-2/CLCN2 Blocking Peptide (#BLP-CL002).