

Datasheet for ABIN7043054

## anti-CLCNKB antibody (C-Term, Intracellular)



[Go to Product page](#)

### 1 Image

#### Overview

Quantity:	50 µL
Target:	CLCNKB
Binding Specificity:	AA 674-687, C-Term, Intracellular
Reactivity:	Mouse, Rat
Host:	Rabbit
Clonality:	Polyclonal
Conjugate:	This CLCNKB antibody is un-conjugated
Application:	Western Blotting (WB), Immunohistochemistry (IHC), Immunofluorescence (IF)

#### Product Details

Immunogen:	Immunogen: Synthetic peptide Immunogen Sequence: (C)KKAISTLTNPPAPK, corresponding to amino acid residues 674-687 of the rat longer form CLC-K2L
Isotype:	IgG
Characteristics:	Anti-CLC-K Antibody (ABIN7043054 and ABIN7044125)) is an antibody directed against an epitope of rat CLC-K2. The antibody can be used in western blot and immunohistochemistry applications. It has been designed to recognize CLC-K channel from rat, mouse, and human samples. The antibody recognizes both CLC-K1 and CLC-K2 isoforms.
Purification:	Affinity purified on immobilized antigen.

## Target Details

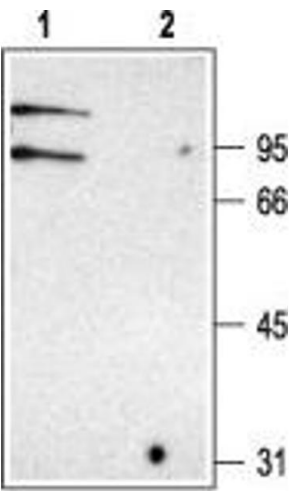
Target:	CLCNKB
Alternative Name:	CLC-K ( <a href="#">CLCNKB Products</a> )
Background:	Alternative names: CLC-K, CLC-K1, CLC-K2, CLC-Ka, CLC-Kb, Clcnka, Clcnkb, ClCk, Chloride channel K
Gene ID:	79430
NCBI Accession:	<a href="#">NM_001042704</a>
UniProt:	<a href="#">P51802</a>

## Application Details

Application Notes:	Optimal working dilution should be determined by the investigator.
Restrictions:	For Research Use only

## Handling

Format:	Lyophilized
Reconstitution:	50 µL or 0.2 mL double distilled water (DDW), depending on the sample size.
Concentration:	0.6 mg/mL
Buffer:	Reconstituted antibody contains phosphate buffered saline (PBS), pH 7.4, 1 % BSA, 5 % sucrose, 0.025 % Sodium azide.
Preservative:	Sodium azide
Precaution of Use:	This product contains Sodium azide: a POISONOUS AND HAZARDOUS SUBSTANCE which should be handled by trained staff only.
Storage:	RT, 4 °C, -20 °C
Storage Comment:	<p>Storage before reconstitution: The antibody ships as a lyophilized powder at room temperature. Upon arrival, it should be stored at -20°C.</p> <p>Storage after reconstitution: The reconstituted solution can be stored at 4°C for up to 1 week. For longer periods, small aliquots should be stored at -20°C. Avoid multiple freezing and thawing. Centrifuge all antibody preparations before use (10000 x g 5 min).</p>



Western Blotting

**Image 1.** Western blot analysis of rat kidney membranes: -  
1. Anti-CLC-K Antibody (ABIN7043054 and ABIN7044125), (1:200).2. Anti-CLC-K Antibody, preincubated with CLC-K Blocking Peptide (#BLP-CL004).