

Datasheet for ABIN7043057
anti-CLIC4 antibody (Intracellular)



[Go to Product page](#)

2 Images

Overview

Quantity:	50 µL
Target:	CLIC4
Binding Specificity:	AA 8-20, Intracellular
Reactivity:	Human
Host:	Rabbit
Clonality:	Polyclonal
Conjugate:	This CLIC4 antibody is un-conjugated
Application:	Western Blotting (WB), Immunofluorescence (IF), Immunochromatography (IC)

Product Details

Purpose:	A Rabbit Polyclonal Antibody to CLIC4 Channel
Immunogen:	Immunogen: Synthetic peptide Immunogen Sequence: (C)NGLKEEDKEPLIE, corresponding to amino acid residues 8-20 of human CLIC4
Isotype:	IgG
Specificity:	Intracellular, N-terminus
Cross-Reactivity:	Human, Mouse, Rat
Predicted Reactivity:	Rat,mouse - identical
Characteristics:	Anti-CLIC4 Antibody (ABIN7043057 and ABIN7044140) is a highly specific antibody directed against an epitope of the human protein. The antibody can be used in western blot and

Product Details

immunocytochemistry applications. It has been designed to recognize CLIC4 from mouse, rat, and human samples.

Purification: Affinity purified on immobilized antigen.

Target Details

Target: CLIC4

Alternative Name: CLIC4 ([CLIC4 Products](#))

Background: Cl⁻ intracellular channel 4, Intracellular chloride ion channel p64H1, Chloride intracellular channel (CLIC) is a family of proteins encoded by six different genes (CLIC1-6)¹⁻³. The localization of the various CLIC channels remains elusive and controversial since they can be either found in a soluble form in the cytoplasm or as integral membrane proteins (in intracellular compartments such as the nuclear membrane or the endoplasmic reticulum for example, or associated with the plasma membrane) via their single transmembrane domain¹. When membrane associated, CLIC channels indeed function as ion channels (enabling the passage of Cl⁻ ions). Non-channel functions are also attributed to CLICs and include cell cycle regulation, cell differentiation, and apoptosis. These different roles depend on whether CLICs are membrane bound or cytosolic¹. For instance, CLIC4 is involved in keratinocyte differentiation in a TGFb-dependent manner^{4,5}, in such a way that TGFb stimulation induces the expression and nuclear localization of CLIC4 and its subsequent interaction with transcription factors⁴. CLIC4 is also required for growth arrest and apoptosis under stress⁶. CLIC4 distribution is rather ubiquitous but shows higher expression level in the skin, kidney, brain and testes⁷.

Alternative names: CLIC4, Cl⁻ intracellular channel 4, Intracellular chloride ion channel p64H1

Gene ID: 25932

NCBI Accession: [NM_013943](#)

UniProt: [Q9Y696](#)

Application Details

Application Notes: Antigen preadsorption control: 1 µg peptide per 1 µg antibody
Application Dilutions Immunohistochemistry paraffin embedded sections ihc: N/A
Application Dilutions Western blot wb: 1:200

Comment: Negative Control: (ABIN7235106)

Application Details

	Blocking Peptide: (ABIN7235106)
Restrictions:	For Research Use only

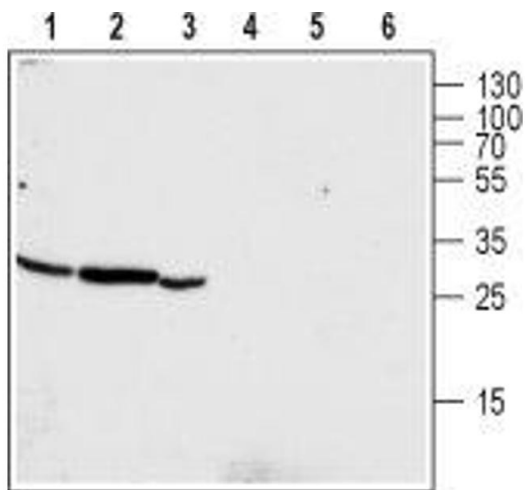
Handling

Format:	Lyophilized
Reconstitution:	Reconstitute with double distilled water (DDW) to a concentration of 1.0 mg/mL.
Concentration:	1 mg/mL
Buffer:	PBS pH 7.4
Storage:	4 °C,-20 °C

Storage Comment: Storage before reconstitution: The antibody ships as a lyophilized powder at room temperature. Upon arrival, it should be stored at -20°C.

Storage after reconstitution: The reconstituted solution can be stored at 4°C for up to 1 week. For longer periods, small aliquots should be stored at -20°C. Avoid multiple freezing and thawing. Centrifuge all antibody preparations before use (10000 x g 5 min).

Images



Western Blotting

Image 1. Western blot analysis of human pancreatic carcinoma PANC-1 (lanes 1 and 4), mouse kidney (lanes 2 and 5) and rat kidney (lanes 3 and 6) lysates: - 1-3. Anti-CLIC4 Antibody (ABIN7043057 and ABIN7044140), (1:200).4-6. Anti-CLIC4 Antibody, preincubated with CLIC4 Blocking Peptide (#BLP-CL024).



Immunocytochemistry

Image 2. Expression of CLIC4 in human pancreatic carcinoma PANC-1 cells - Immunocytochemical staining of fixed and permeabilized human pancreatic carcinoma PANC-1 cells. A. Cells were stained with Anti-CLIC4 Antibody (ABIN7043057 and ABIN7044140), (1:200), followed by goat anti-rabbit-AlexaFluor-594 secondary antibody (red). B. Cell nuclei were visualized using Hoechst 33342 (blue). C. Live image of the cells.