

Datasheet for ABIN7043059

anti-CCKBR antibody (Extracellular, N-Term)

3 Images

[Go to Product page](#)

Overview

Quantity:	25 µL
Target:	CCKBR
Binding Specificity:	AA 39-53, Extracellular, N-Term
Reactivity:	Human, Rat, Mouse
Host:	Rabbit
Clonality:	Polyclonal
Conjugate:	This CCKBR antibody is un-conjugated
Application:	Western Blotting (WB), Immunohistochemistry (IHC), Flow Cytometry (FACS)

Product Details

Immunogen:	Immunogen: Synthetic peptide Immunogen Sequence: CETPRIRGTGTRELE, corresponding to amino acid residues 39-53 of mouse Gastrin/cholecystokinin type B receptor
Isotype:	IgG
Characteristics:	Anti-CCKBR (extracellular) Antibody (ABIN7043059, ABIN7044183 and ABIN7044184)) is a highly specific antibody directed against an epitope of the mouse cholecystokinin B receptor. The antibody can be used in western blot, indirect flow cytometry, and immunohistochemistry applications. It has been designed to recognize CCKBR from mouse, rat, and human samples.
Purification:	Affinity purified on immobilized antigen.

Target Details

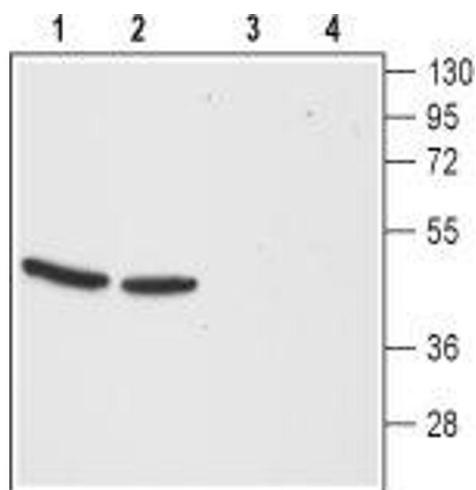
Target:	CCKBR
Alternative Name:	CCKBR (CCKBR Products)
Background:	Alternative names: CCKBR, Cholecystokinin B receptor, Gastrin receptor, CCK2R, GASR
Gene ID:	12426
NCBI Accession:	NM_176875
UniProt:	P56481
Pathways:	Positive Regulation of Peptide Hormone Secretion, Feeding Behaviour

Application Details

Application Notes:	Optimal working dilution should be determined by the investigator.
Restrictions:	For Research Use only

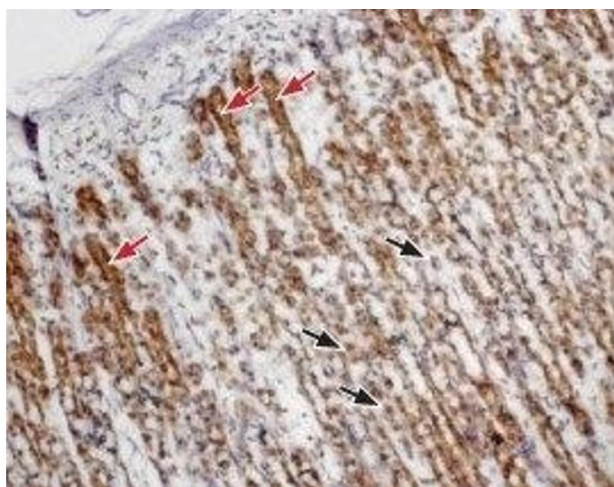
Handling

Format:	Lyophilized
Reconstitution:	25 µL, 50 µL or 0.2 mL double distilled water (DDW), depending on the sample size.
Concentration:	0.8 mg/mL
Buffer:	Reconstituted antibody contains phosphate buffered saline (PBS), pH 7.4, 1 % BSA, 0.05 % Sodium azide.
Preservative:	Sodium azide
Precaution of Use:	This product contains Sodium azide: a POISONOUS AND HAZARDOUS SUBSTANCE which should be handled by trained staff only.
Storage:	RT, 4 °C, -20 °C
Storage Comment:	<p>Storage before reconstitution: The antibody ships as a lyophilized powder at room temperature. Upon arrival, it should be stored at -20°C.</p> <p>Storage after reconstitution: The reconstituted solution can be stored at 4°C for up to 1 week. For longer periods, small aliquots should be stored at -20°C. Avoid multiple freezing and thawing. Centrifuge all antibody preparations before use (10000 x g 5 min).</p>



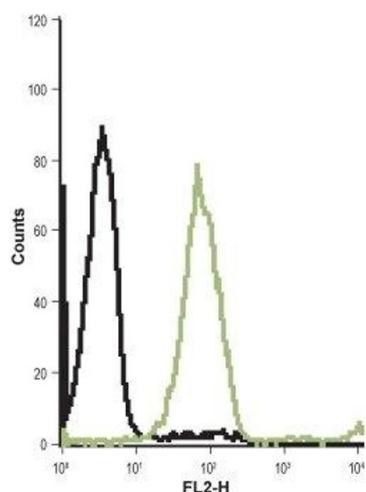
Western Blotting

Image 1. Western blot analysis of mouse (lanes 1 and 3) and rat (lanes 2 and 4) brain membranes: - 1,2. Anti-CCKBR (extracellular) Antibody (ABIN7043059, ABIN7044183 and ABIN7044184), (1:200).3,4. Anti-CCKBR (extracellular) Antibody, preincubated with CCKBR (extracellular) Blocking Peptide (#BLP-CR042).



Immunohistochemistry

Image 2. Expression of Cholecystokinin B receptor in rat stomach - Immunohistochemical staining of paraffin embedded rat stomach sections using Anti-CCKBR (extracellular) Antibody (ABIN7043059, ABIN7044183 and ABIN7044184), (1:100). Cholecystokinin B receptor (brown) is expressed in both parietal cells (black arrows) and in chief cells (red arrows) of the gastric mucosa. Hematoxylin is used as the counterstain.



Flow Cytometry

Image 3. Cell surface detection of Cholecystokinin B receptor in live intact Jurkat (human T cell leukemia) cell lines: (black line) Unstained cells + goat-anti-rabbit-Phycoerythrin (PE). (green line) Cells + Anti-CCKBR (extracellular) Antibody (ABIN7043059, ABIN7044183 and ABIN7044184), (1:20) + goat-anti-rabbit-PE.