

Datasheet for ABIN7043061
anti-CHRM1 antibody (C-Term, Intracellular)[Go to Product page](#)

2 Images

Overview

Quantity:	50 µL
Target:	CHRM1
Binding Specificity:	AA 443-458, C-Term, Intracellular
Reactivity:	Rat, Human, Mouse
Host:	Rabbit
Clonality:	Polyclonal
Conjugate:	This CHRM1 antibody is un-conjugated
Application:	Western Blotting (WB), Immunohistochemistry (IHC), Immunofluorescence (IF)

Product Details

Immunogen:	Immunogen: Synthetic peptide Immunogen Sequence: (C)RKIPKRPGSVHRTPSR, corresponding to amino acid residues 443-458 of human M1 muscarinic receptor
Isotype:	IgG
Characteristics:	Anti-CHRM1 (443-458) Antibody (ABIN7043061, ABIN7044590 and ABIN7044591)) is a highly specific antibody directed against an epitope of the human M1 muscarinic receptor. The antibody can be used in western blot and immunohistochemistry applications. It has been designed to recognize M1 receptor from mouse, rat, and human samples.
Purification:	Affinity purified on immobilized antigen.

Target Details

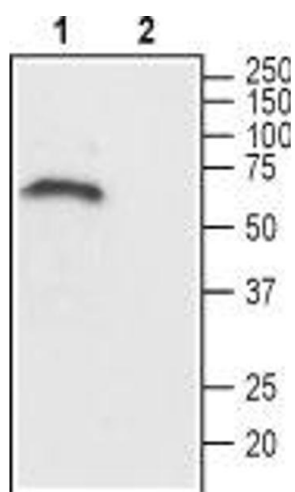
Target:	CHRM1
Alternative Name:	CHRM1 (CHRM1 Products)
Background:	Alternative names: M1 Muscarinic Receptor, CHRM1, Cholinergic muscarinic receptor 1, Muscarinic acetylcholine receptor M1
Gene ID:	1128
NCBI Accession:	NM_000738
UniProt:	P11229
Pathways:	Synaptic Membrane

Application Details

Application Notes:	Optimal working dilution should be determined by the investigator.
Restrictions:	For Research Use only

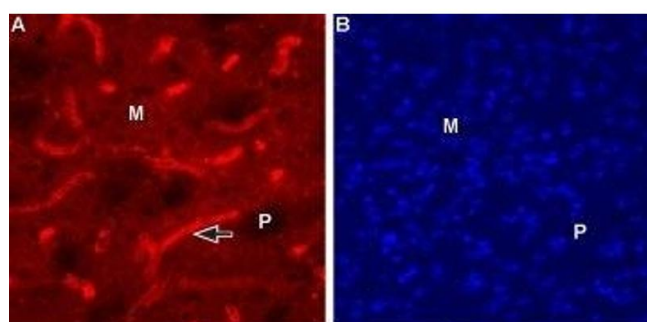
Handling

Format:	Lyophilized
Reconstitution:	25 µL, 50 µL or 0.2 mL double distilled water (DDW), depending on the sample size.
Concentration:	0.8 mg/mL
Buffer:	Reconstituted antibody contains phosphate buffered saline (PBS), pH 7.4, 1 % BSA, 0.05 % Sodium azide.
Preservative:	Sodium azide
Precaution of Use:	This product contains Sodium azide: a POISONOUS AND HAZARDOUS SUBSTANCE which should be handled by trained staff only.
Storage:	RT, 4 °C, -20 °C
Storage Comment:	<p>Storage before reconstitution: The antibody ships as a lyophilized powder at room temperature. Upon arrival, it should be stored at -20°C.</p> <p>Storage after reconstitution: The reconstituted solution can be stored at 4°C for up to 1 week. For longer periods, small aliquots should be stored at -20°C. Avoid multiple freezing and thawing. Centrifuge all antibody preparations before use (10000 x g 5 min).</p>



Western Blotting

Image 1. Western blot analysis of rat brain lysate: - 1. Anti-CHRM1 (443-458) Antibody (ABIN7043061, ABIN7044590 and ABIN7044591), (1:200). 2. Anti-CHRM1 (443-458) Antibody, preincubated with CHRM1 (443-458) Blocking Peptide (#BLP-MR010).



Immunohistochemistry

Image 2. Expression of Muscarinic acetylcholine receptor M1 in mouse striatum - Immunohistochemical staining of mouse striatum using Anti-CHRM1 (443-458) Antibody (ABIN7043061, ABIN7044590 and ABIN7044591), (1:100). M1 mAChR staining (red) appears in the matrix (M), not in the patches (P). Blood vessels in the matrix (arrow) are also stained. DAPI is used as the counterstain (blue).