

Datasheet for ABIN7043065

anti-CHRM5 antibody (Extracellular, N-Term)**2** Images[Go to Product page](#)

Overview

Quantity:	25 µL
Target:	CHRM5
Binding Specificity:	AA 7-24, Extracellular, N-Term
Reactivity:	Human, Rat
Host:	Rabbit
Clonality:	Polyclonal
Conjugate:	This CHRM5 antibody is un-conjugated
Application:	Western Blotting (WB)

Product Details

Immunogen:	Immunogen: Synthetic peptide
	Immunogen Sequence: (C)HNATTVNGTPVNHQPLER, corresponding to amino acid residues 7-24 of human M5 muscarinic receptor
Isotype:	IgG
Characteristics:	Anti-CHRM5 (extracellular) Antibody is directed against an extracellular epitope of the human M5 muscarinic receptor. Anti-CHRM5 (extracellular) Antibody (ABIN7043065, ABIN7044586 and ABIN7044587)) can be used for western blot analysis. It was specifically designed to recognize rat, mouse and human M5.
Purification:	Affinity purified on immobilized antigen.

Target Details

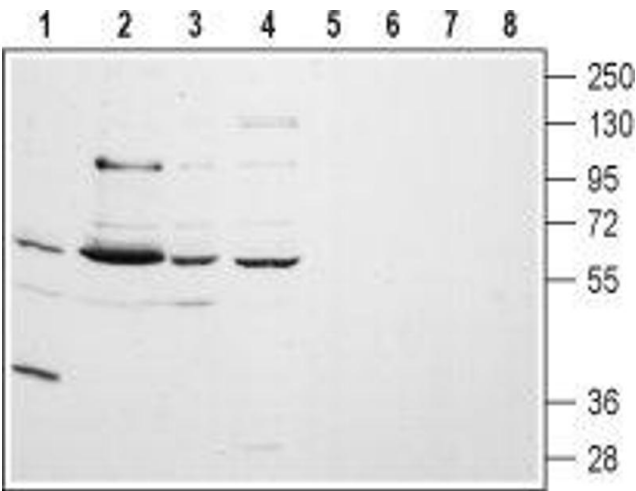
Target:	CHRM5
Alternative Name:	CHRM5 (CHRM5 Products)
Background:	Alternative names: M5 Muscarinic Receptor, CHRM5, Muscarinic acetylcholine receptor M5, Cholinergic receptor muscarinic 5, mAChR M5, HM5
Gene ID:	1133
NCBI Accession:	NM_001320917
UniProt:	P08912
Pathways:	Synaptic Membrane

Application Details

Application Notes:	Optimal working dilution should be determined by the investigator.
Restrictions:	For Research Use only

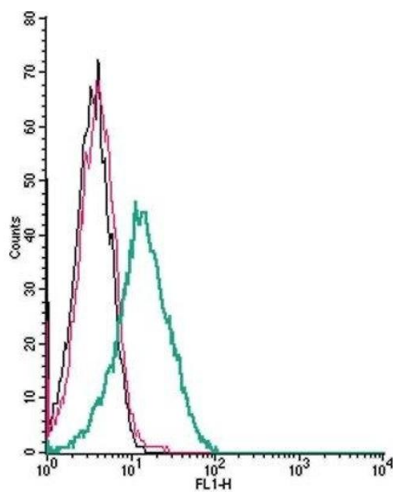
Handling

Format:	Lyophilized
Reconstitution:	25 µL, 50 µL or 0.2 mL double distilled water (DDW), depending on the sample size.
Concentration:	0.8 mg/mL
Buffer:	Reconstituted antibody contains phosphate buffered saline (PBS), pH 7.4, 1 % BSA, 0.05 % Sodium azide.
Preservative:	Sodium azide
Precaution of Use:	This product contains Sodium azide: a POISONOUS AND HAZARDOUS SUBSTANCE which should be handled by trained staff only.
Storage:	RT, 4 °C, -20 °C
Storage Comment:	<p>Storage before reconstitution: The antibody ships as a lyophilized powder at room temperature. Upon arrival, it should be stored at -20°C.</p> <p>Storage after reconstitution: The reconstituted solution can be stored at 4°C for up to 1 week. For longer periods, small aliquots should be stored at -20°C. Avoid multiple freezing and thawing. Centrifuge all antibody preparations before use (10000 x g 5 min).</p>



Western Blotting

Image 1. Western blot analysis of rat lung (lanes 1 and 5) and brain (lanes 2 and 6) membranes, human A-875 melanoma (lanes 3 and 7) and human MALM-3M malignant melanoma (lanes 4 and 8) cell lysates: - 1-4. Anti-CHRM5 (extracellular) Antibody (ABIN7043065, ABIN7044586 and ABIN7044587), (1:200). 5-8. Anti-CHRM5 (extracellular) Antibody, preincubated with CHRM5 (extracellular) Blocking Peptide (#BLP-MR005).



Flow Cytometry

Image 2. Cell surface detection of CHRM5 by indirect flow cytometry in live intact human Jurkat T-cell leukemia cells: (black line) Cells.(red line) Cells + goat-anti-rabbit-FITC.(green line) Cells + Anti-CHRM5 (extracellular) Antibody (ABIN7043065, ABIN7044586 and ABIN7044587), (5 µg) + goat-anti-rabbit-FITC.