

Datasheet for ABIN7043075
anti-F2RL1 antibody (C-Term, Intracellular)

5 Images

[Go to Product page](#)

Overview

Quantity:	25 µL
Target:	F2RL1
Binding Specificity:	AA 368-382, C-Term, Intracellular
Reactivity:	Human, Mouse, Rat
Host:	Rabbit
Clonality:	Polyclonal
Conjugate:	This F2RL1 antibody is un-conjugated
Application:	Western Blotting (WB), Immunohistochemistry (IHC), Immunofluorescence (IF), Immunocytochemistry (ICC)

Product Details

Immunogen:	Immunogen: Synthetic peptide Immunogen Sequence: (C)KRMQISLTSNKFSRK, corresponding to amino acid residues 368-382 of rat PAR-2
Isotype:	IgG
Characteristics:	Anti-PAR2 (F2RL1) Antibody is directed against an epitope of rat protease-activated receptor-2. Anti-PAR2 (F2RL1) Antibody (ABIN7043075, ABIN7045104 and ABIN7045105)) can be used in western blot, immunohistochemistry and and immunocytochemistry applications. It has been designed to recognize PAR-2 from rat, mouse and human samples.
Purification:	Affinity purified on immobilized antigen.

Target Details

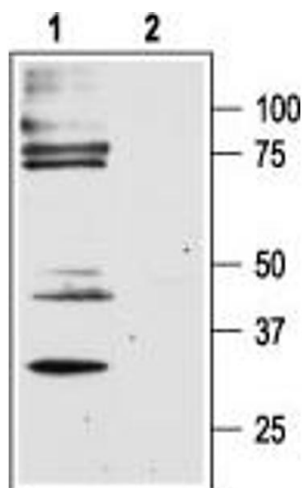
Target:	F2RL1
Alternative Name:	PAR2 (F2RL1) (F2RL1 Products)
Background:	Alternative names: PAR2 (F2RL1), Protease-activated receptor-2, PAR-2, Thrombin receptor-like 1, Coagulation factor II receptor-like 1, GPR11
Gene ID:	116677
NCBI Accession:	NM_005242
UniProt:	Q63645
Pathways:	Regulation of Leukocyte Mediated Immunity , Positive Regulation of Immune Effector Process , Production of Molecular Mediator of Immune Response , SARS-CoV-2 Protein Interactome

Application Details

Application Notes:	Optimal working dilution should be determined by the investigator.
Restrictions:	For Research Use only

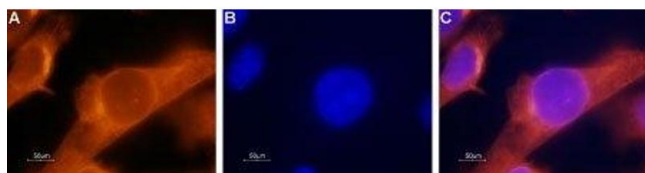
Handling

Format:	Lyophilized
Reconstitution:	25 µL, 50 µL or 0.2 mL double distilled water (DDW), depending on the sample size.
Concentration:	0.6 mg/mL
Buffer:	Reconstituted antibody contains phosphate buffered saline (PBS), pH 7.4, 1 % BSA, 0.05 % Sodium azide.
Preservative:	Sodium azide
Precaution of Use:	This product contains Sodium azide: a POISONOUS AND HAZARDOUS SUBSTANCE which should be handled by trained staff only.
Storage:	RT, 4 °C, -20 °C
Storage Comment:	<p>Storage before reconstitution: The antibody ships as a lyophilized powder at room temperature. Upon arrival, it should be stored at -20°C.</p> <p>Storage after reconstitution: The reconstituted solution can be stored at 4°C for up to 1 week. For longer periods, small aliquots should be stored at -20°C. Avoid multiple freezing and thawing. Centrifuge all antibody preparations before use (10000 x g 5 min).</p>



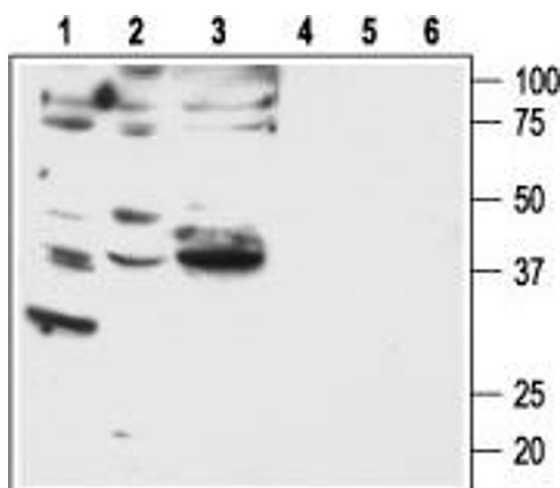
Western Blotting

Image 1. Western blot analysis of rat dorsal root ganglion lysates: - 1. Anti-PAR2 (F2RL1) Antibody (ABIN7043075, ABIN7045104 and ABIN7045105), (1:200). 2. Anti-PAR2 (F2RL1) Antibody, preincubated with PAR2/F2RL1 Blocking Peptide (#BLP-PR032).



Immunocytochemistry

Image 2. Expression of PAR-2 in human prostate carcinoma cell line - Immunocytochemical staining of paraformaldehyde-fixed and permeabilized human PC-3 cells. A. Cells were stained with Anti-PAR2 (F2RL1) Antibody (ABIN7043075, ABIN7045104 and ABIN7045105), (1:500), followed by goat-anti-rabbit-AlexaFluor-555 secondary antibody (orange). B. Nuclei were visualized with the cell-permeable dye Hoechst 33342 (blue). C. Merge of A and B.



Western Blotting

Image 3. Western blot analysis of human breast adenocarcinoma MDA-MB-231 (lanes 1 and 4) and MDA-MB-468 (lanes 2 and 5), and human lung small cell carcinoma NCI-H526 (lanes 3 and 6) cell lines: - 1-3. Anti-PAR2 (F2RL1) Antibody (ABIN7043075, ABIN7045104 and ABIN7045105), (1:600). 4-6. Anti-PAR2 (F2RL1) Antibody, preincubated with PAR2/F2RL1 Blocking Peptide (#BLP-PR032).

Please check the [product details page](#) for more images. Overall 5 images are available for ABIN7043075.