

Datasheet for ABIN7043076

anti-F2RL1 antibody (Extracellular, N-Term)[Go to Product page](#)**2** Images

Overview

Quantity:	0.2 mL
Target:	F2RL1
Binding Specificity:	AA 40-52, Extracellular, N-Term
Reactivity:	Human
Host:	Rabbit
Clonality:	Polyclonal
Conjugate:	This F2RL1 antibody is un-conjugated
Application:	Western Blotting (WB), Flow Cytometry (FACS)

Product Details

Immunogen:	Immunogen: Synthetic peptide
	Immunogen Sequence: (C)GKVDGTSHVTGKG, corresponding to amino acid residues 40 - 52 of human PAR2/F2RL1
Isotype:	IgG
Cross-Reactivity (Details):	The antibody will not recognize rat or mouse PAR2.
Characteristics:	Anti-Human PAR2/F2RL1 (extracellular) Antibody (ABIN7043076, ABIN7045108 and ABIN7045109)) is a highly specific antibody directed against an epitope of the human protein. The antibody can be used in western blot and indirect live cell flow cytometry. It has been designed to recognize PAR2 from human only.
Purification:	Affinity purified on immobilized antigen.

Target Details

Target:	F2RL1
Alternative Name:	PAR2/F2RL1 (F2RL1 Products)
Background:	Alternative names: Protease-activated receptor-2, PAR-2, Thrombin receptor-like 1, Coagulation factor II receptor-like 1, GPR11
Gene ID:	2150
NCBI Accession:	NM_005242
UniProt:	P55085
Pathways:	Regulation of Leukocyte Mediated Immunity , Positive Regulation of Immune Effector Process , Production of Molecular Mediator of Immune Response , SARS-CoV-2 Protein Interactome

Application Details

Application Notes:	Optimal working dilution should be determined by the investigator.
Restrictions:	For Research Use only

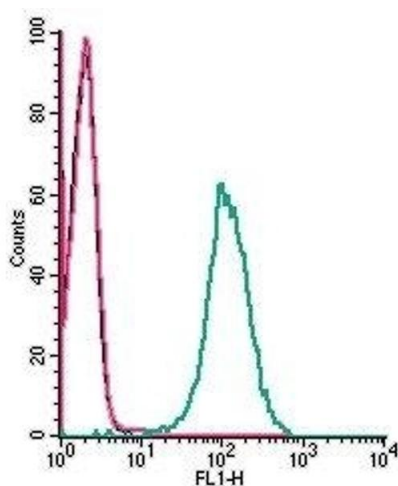
Handling

Format:	Lyophilized
Reconstitution:	25 µL, 50 µL or 0.2 mL double distilled water (DDW), depending on the sample size.
Concentration:	0.8 mg/mL
Buffer:	Reconstituted antibody contains phosphate buffered saline (PBS), pH 7.4, 1 % BSA, 0.05 % Sodium azide.
Preservative:	Sodium azide
Precaution of Use:	This product contains Sodium azide: a POISONOUS AND HAZARDOUS SUBSTANCE which should be handled by trained staff only.
Storage:	RT, 4 °C, -20 °C
Storage Comment:	<p>Storage before reconstitution: The antibody ships as a lyophilized powder at room temperature. Upon arrival, it should be stored at -20°C.</p> <p>Storage after reconstitution: The reconstituted solution can be stored at 4°C for up to 1 week. For longer periods, small aliquots should be stored at -20°C. Avoid multiple freezing and thawing. Centrifuge all antibody preparations before use (10000 x g 5 min).</p>



Western Blotting

Image 1. Western blot analysis of human HT-29 colon adenocarcinoma cell line lysate (lanes 1 and 6), human PANC-1 pancreatic carcinoma cell line lysate (lanes 2 and 7), human THP-1 monocytic leukemia cell line lysate (lanes 3 and 8), human Jurkat T-cell leukemia cell line lysate (lanes 4 and 9) and human MCF-7 breast adenocarcinoma cell line lysate (lanes 5 and 10): - 1-5. Anti-Human PAR2/F2RL1 (extracellular) Antibody (ABIN7043076, ABIN7045108 and ABIN7045109), (1:200). 6-10. Anti-Human PAR2/F2RL1 (extracellular) Antibody, preincubated with Human PAR2/F2RL1 (extracellular) Blocking Peptide (#BLP-PR035) (#BLP-PR035).



Flow Cytometry

Image 2. Cell surface detection of PAR2 in live intact human THP-1 monocytic leukemia cells: (black line) Cells.(red line) Cells + goat-anti-rabbit-FITC.(green line) Cells + Anti-Human PAR2/F2RL1 (extracellular) Antibody (ABIN7043076, ABIN7045108 and ABIN7045109), (2.5 µg) + goat-anti-rabbit-FITC.