

Datasheet for ABIN7043083

anti-Contactin 1 antibody (Extracellular, N-Term)



[Go to Product page](#)

3 Images

Overview

Quantity:	50 µL
Target:	Contactin 1 (CNTN1)
Binding Specificity:	AA 947-961, Extracellular, N-Term
Reactivity:	Human, Mouse, Rat
Host:	Rabbit
Clonality:	Polyclonal
Conjugate:	This Contactin 1 antibody is un-conjugated
Application:	Western Blotting (WB), Immunohistochemistry (IHC), Immunofluorescence (IF)

Product Details

Immunogen:	<p>Immunogen: Synthetic peptide</p> <p>Immunogen Sequence: (C)RPDGQHDGKLFSTHK, corresponding to amino acid residues 947 - 961 of rat Contactin-1</p>
Isotype:	IgG
Characteristics:	<p>Anti-Contactin-1/CNTN1 (extracellular) Antibody (ABIN7043083, ABIN7044738 and ABIN7044739)) is a highly specific antibody directed against an epitope of the rat protein. The antibody can be used western blot and immunohistochemistry applications. It has been designed to recognize CNTN1 from rat, mouse, and human samples.</p>
Purification:	Affinity purified on immobilized antigen.

Target Details

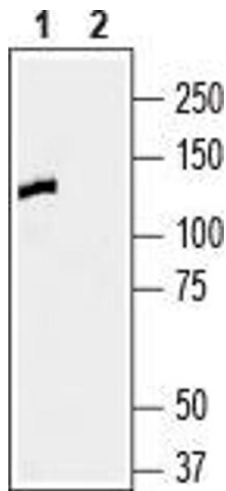
Target:	Contactin 1 (CNTN1)
Alternative Name:	Contactin-1/CNTN1 (CNTN1 Products)
Background:	Alternative names: Contactin-1, CNTN1, Neural cell surface protein F3, Glycoprotein GP135, CNTN1
Gene ID:	117258
NCBI Accession:	NM_001843
UniProt:	Q63198

Application Details

Application Notes:	Optimal working dilution should be determined by the investigator.
Restrictions:	For Research Use only

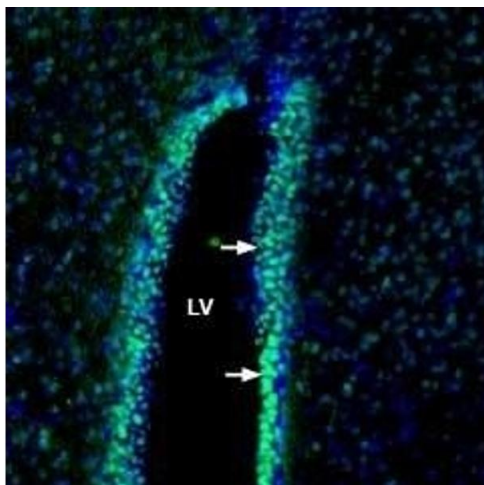
Handling

Format:	Lyophilized
Reconstitution:	25 µL, 50 µL or 0.2 mL double distilled water (DDW), depending on the sample size.
Concentration:	0.8 mg/mL
Buffer:	Reconstituted antibody contains phosphate buffered saline (PBS), pH 7.4, 1 % BSA, 0.05 % Sodium azide.
Preservative:	Sodium azide
Precaution of Use:	This product contains Sodium azide: a POISONOUS AND HAZARDOUS SUBSTANCE which should be handled by trained staff only.
Storage:	RT, 4 °C, -20 °C
Storage Comment:	<p>Storage before reconstitution: The antibody ships as a lyophilized powder at room temperature. Upon arrival, it should be stored at -20°C.</p> <p>Storage after reconstitution: The reconstituted solution can be stored at 4°C for up to 1 week. For longer periods, small aliquots should be stored at -20°C. Avoid multiple freezing and thawing. Centrifuge all antibody preparations before use (10000 x g 5 min).</p>



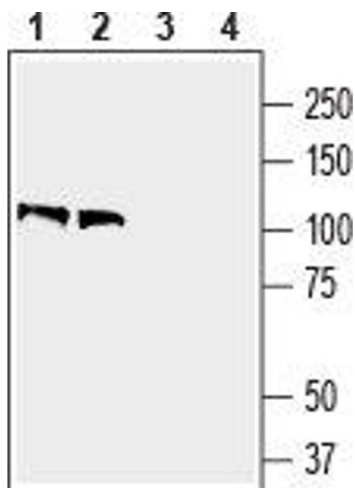
Western Blotting

Image 1. Western blot analysis of human SH-SY5Y neuroblastoma cell line lysate: - 1. Anti-Contactin-1/CNTN1 (extracellular) Antibody (ABIN7043083, ABIN7044738 and ABIN7044739), (1:400). 2. Anti-Contactin-1/CNTN1 (extracellular) Antibody, preincubated with Contactin-1 (extracellular) Blocking Peptide (#BLP-NR171).



Immunohistochemistry

Image 2. Expression of Contactin-1 in rat cerebral ventricle: - Immunohistochemical staining of perfusion-fixed frozen rat brain sections with Anti-Contactin-1/CNTN1 (extracellular) Antibody (ABIN7043083, ABIN7044738 and ABIN7044739), (1:200), followed by goat anti-rabbit-AlexaFluor-488. Contactin-1 immunoreactivity (green) appears in ependymal cells (arrows) lining the lateral cerebral ventricle (LV). Cell nuclei are stained with DAPI (blue).



Western Blotting

Image 3. Western blot analysis of mouse brain lysate (lanes 1 and 3) and rat brain membranes (lanes 2 and 4): - 1,2. Anti-Contactin-1/CNTN1 (extracellular) Antibody (ABIN7043083, ABIN7044738 and ABIN7044739), (1:200). 3,4. Anti-Contactin-1/CNTN1 (extracellular) Antibody, preincubated with Contactin-1 (extracellular) Blocking Peptide (#BLP-NR171).