

Datasheet for ABIN7043086

anti-CRHR1 antibody (Extracellular, N-Term)



[Go to Product page](#)

4 Images

Overview

Quantity:	25 µL
Target:	CRHR1
Binding Specificity:	AA 31-44, Extracellular, N-Term
Reactivity:	Human, Mouse, Rat
Host:	Rabbit
Clonality:	Polyclonal
Conjugate:	This CRHR1 antibody is un-conjugated
Application:	Western Blotting (WB), Immunohistochemistry (IHC), Immunofluorescence (IF)

Product Details

Immunogen:	Immunogen: Synthetic peptide Immunogen Sequence: ENLSLTSNVSG LQC, corresponding to amino acid residues 31-44 of rat CRHR1
Isotype:	IgG
Characteristics:	Anti-CRF1/CRHR1 (extracellular) Antibody (ABIN7043086, ABIN7044185 and ABIN7044186)) is a highly specific antibody directed against an extracellular epitope of the rat Corticotropin-releasing factor receptor 1. It can be used in western blot and immunohistochemistry applications. The antibody recognizes an extracellular epitope, and is thus ideal for detecting the protein in living cells. It has been designed to recognize CRFR1 from human, mouse, and rat samples.
Purification:	Affinity purified on immobilized antigen.

Target Details

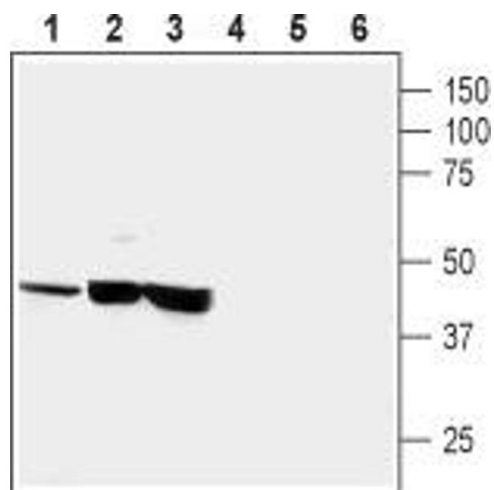
Target:	CRHR1
Alternative Name:	CRF1/CRHR1 (CRHR1 Products)
Background:	Alternative names: CRF1 (CRHR1), Corticotropin-releasing factor receptor 1, CRFR1, Corticotropin-releasing hormone receptor 1, CRH-R1, CRH1
Gene ID:	58959
NCBI Accession:	NM_001145146
UniProt:	P35353
Pathways:	Hormone Transport , cAMP Metabolic Process , Myometrial Relaxation and Contraction , Regulation of Leukocyte Mediated Immunity , Positive Regulation of Immune Effector Process , Feeding Behaviour , Negative Regulation of Transporter Activity

Application Details

Application Notes:	Optimal working dilution should be determined by the investigator.
Restrictions:	For Research Use only

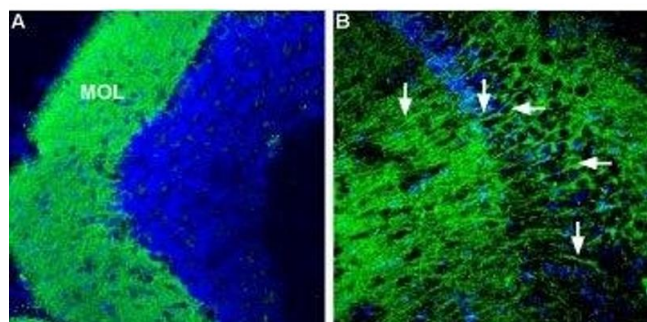
Handling

Format:	Lyophilized
Reconstitution:	25 µL, 50 µL or 0.2 mL double distilled water (DDW), depending on the sample size.
Concentration:	0.85 mg/mL
Buffer:	Reconstituted antibody contains phosphate buffered saline (PBS), pH 7.4, 1 % BSA, 0.05 % Sodium azide.
Preservative:	Sodium azide
Precaution of Use:	This product contains Sodium azide: a POISONOUS AND HAZARDOUS SUBSTANCE which should be handled by trained staff only.
Storage:	RT,4 °C,-20 °C
Storage Comment:	<p>Storage before reconstitution: The antibody ships as a lyophilized powder at room temperature. Upon arrival, it should be stored at -20°C.</p> <p>Storage after reconstitution: The reconstituted solution can be stored at 4°C for up to 1 week. For longer periods, small aliquots should be stored at -20°C. Avoid multiple freezing and thawing. Centrifuge all antibody preparations before use (10000 x g 5 min).</p>



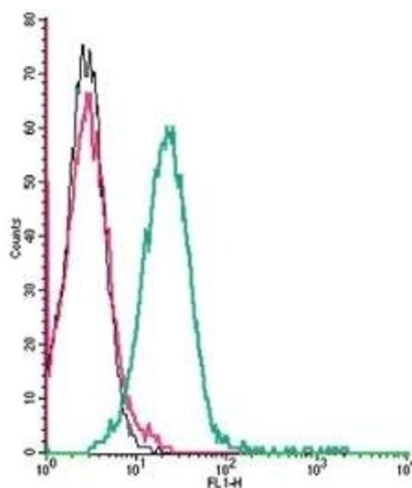
Western Blotting

Image 1. Western blot analysis of human neuroblastoma (SH-SY5Y) (lanes 1 and 4), human brain astrocytoma (CCF-STTG1) (lanes 2 and 5) and rat pheochromocytoma (PC12) (lanes 3 and 6): - 1-3. Anti-CRF1/CRHR1 (extracellular) Antibody (ABIN7043086, ABIN7044185 and ABIN7044186), (1:200). 4-6. Anti-CRF1/CRHR1 (extracellular) Antibody, preincubated with CRF1/CRHR1 (extracellular) Blocking Peptide (#BLP-CR050).



Immunohistochemistry

Image 2. Expression of Corticotropin-releasing factor receptor 1 in mouse brain - Immunohistochemical staining of mouse hippocampus and mouse cerebellum using Anti-CRF1/CRHR1 (extracellular) Antibody (ABIN7043086, ABIN7044185 and ABIN7044186), (1:600). A. CRF1 staining (green) in the cerebellum appears in cerebellar molecular layer (MOL). B. CRF1 staining (green) in the hippocampus appears in soma (horizontal arrows) and dendrites of pyramidal neurons (arrow). In both panels DAPI was used as the counterstain.



Flow Cytometry

Image 3. Cell surface detection of Corticotropin-releasing factor receptor 1 by indirect flow cytometry in live intact mouse P815 mastocytoma cells: (black line) Cells. (red line) Cells + goat-anti-rabbit-FITC. (green line) Cells + Anti-CRF1/CRHR1 (extracellular) Antibody (ABIN7043086, ABIN7044185 and ABIN7044186), (2.5 µg) + goat-anti-rabbit-FITC.

Please check the [product details page](#) for more images. Overall 4 images are available for ABIN7043086.