

Datasheet for ABIN7043093

anti-CysLTR1 antibody (3rd Extracellular Loop)**2** Images[Go to Product page](#)

Overview

Quantity:	50 µL
Target:	CysLTR1 (CYSLTR1)
Binding Specificity:	3rd Extracellular Loop, AA 261-275
Reactivity:	Human, Mouse
Host:	Rabbit
Clonality:	Polyclonal
Application:	Western Blotting (WB), Flow Cytometry (FACS)

Product Details

Immunogen:	Immunogen: Synthetic peptide Immunogen Sequence: (C)HNETKP(S)DSVLRMQK, corresponding to amino acid residues 261-275 of human CysLTR1
Isotype:	IgG
Characteristics:	Anti-CysLTR1 (extracellular) Antibody (ABIN7043093, ABIN7044558 and ABIN7044559)) is a highly specific antibody directed against an epitope of the human protein. The antibody can be used in western blot and indirect live cell flow cytometry applications. It has been designed to recognize CysLTR1 from human, mouse, and rat samples.
Purification:	Affinity purified on immobilized antigen.

Target Details

Target:	CysLTR1 (CYSLTR1)
---------	-------------------

Target Details

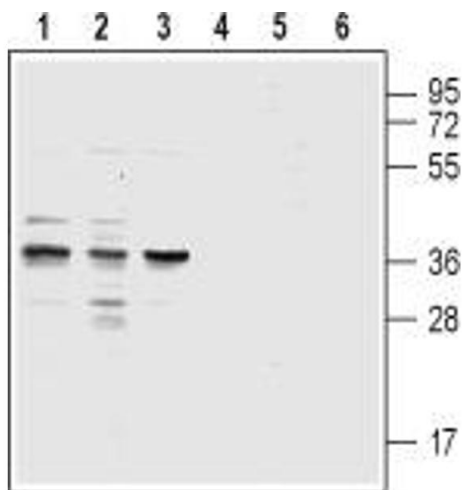
Alternative Name:	CysLTR1 (CYSLTR1 Products)
Background:	Alternative names: CysLTR1, CYSLT1, Cysteinyl leukotriene receptor 1, Cysteinyl leukotriene D4 receptor, LTD4 receptor, G-protein coupled receptor HG55, HMTMF81
Gene ID:	10800
NCBI Accession:	NM_001282186
UniProt:	Q9Y271

Application Details

Application Notes:	Optimal working dilution should be determined by the investigator.
Restrictions:	For Research Use only

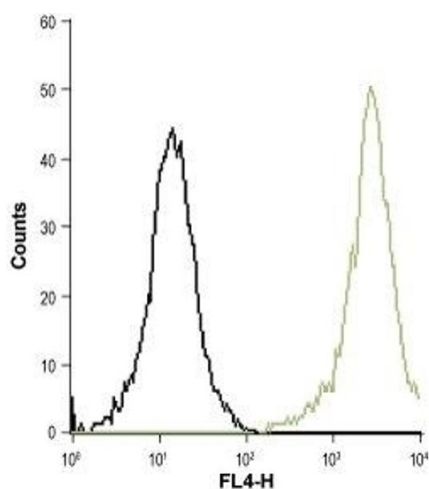
Handling

Format:	Lyophilized
Reconstitution:	25 µL, 50 µL or 0.2 mL double distilled water (DDW), depending on the sample size.
Concentration:	0.8 mg/mL
Buffer:	Reconstituted antibody contains phosphate buffered saline (PBS), pH 7.4, 1 % BSA, 0.05 % Sodium azide.
Preservative:	Sodium azide
Precaution of Use:	This product contains Sodium azide: a POISONOUS AND HAZARDOUS SUBSTANCE which should be handled by trained staff only.
Storage:	RT, 4 °C, -20 °C
Storage Comment:	<p>Storage before reconstitution: The antibody ships as a lyophilized powder at room temperature. Upon arrival, it should be stored at -20°C.</p> <p>Storage after reconstitution: The reconstituted solution can be stored at 4°C for up to 1 week. For longer periods, small aliquots should be stored at -20°C. Avoid multiple freezing and thawing. Centrifuge all antibody preparations before use (10000 x g 5 min).</p>



Western Blotting

Image 1. Western blot analysis of acute monocytic leukemia THP-1 (lanes 1 and 4), promyelocytic leukemia HL-60 (lanes 2 and 5) and acute T-cell leukemia Jurkat (lanes 3 and 6) human cell lysates: - 1,2,3. Anti-CysLTR1 (extracellular) Antibody (ABIN7043093, ABIN7044558 and ABIN7044559), (1:200).4,5,6. Anti-CysLTR1 (extracellular) Antibody, preincubated with CysLTR1 (extracellular) Blocking Peptide (#BLP-LR003).



Flow Cytometry

Image 2. Cell surface detection of CysLTR1 in live intact THP-1 (acute monocytic leukemia) cells: (black line) Cells + goat-anti-rabbit-Cy5. (green line) Cells + Anti-CysLTR1 (extracellular) Antibody (ABIN7043093, ABIN7044558 and ABIN7044559), (1:50) + goat-anti-rabbit-Cy5.