

Datasheet for ABIN7043094

anti-CysLTR1 antibody (3rd Extracellular Loop) (FITC)**2** Images[Go to Product page](#)

Overview

Quantity:	50 µL
Target:	CysLTR1 (CYSLTR1)
Binding Specificity:	3rd Extracellular Loop, AA 261-275
Reactivity:	Human, Mouse
Host:	Rabbit
Clonality:	Polyclonal
Conjugate:	This CysLTR1 antibody is conjugated to FITC
Application:	Flow Cytometry (FACS)

Product Details

Immunogen:	Immunogen: Synthetic peptide Immunogen Sequence: (C)HNETKP(S)DSVLRMQK, corresponding to amino acid residues 261-275 of human CysLTR1
Isotype:	IgG
Characteristics:	Anti-CysLTR1 (extracellular) Antibody (ABIN7043093, ABIN7044558 and ABIN7044559)) is a highly specific antibody directed against an epitope of the human protein. The antibody can be used in western blot and indirect live cell flow cytometry applications. It has been designed to recognize CysLTR1 from human, mouse, and rat samples. \nAnti-CysLTR1 (extracellular)-FITC Antibody (ABIN7043093, ABIN7044558 and ABIN7044559)-F) is directly conjugated to fluorescein isothiocyanate (FITC). The antibody can be used in immunofluorescent applications such as direct live cell flow cytometry.

Product Details

Purification: Affinity purified on immobilized antigen.

Target Details

Target: CysLTR1 (CYSLTR1)

Alternative Name: CysLTR1 ([CYSLTR1 Products](#))

Background: Alternative names: CysLTR1, CYSLT1, Cysteinyl leukotriene receptor 1, Cysteinyl leukotriene D4 receptor, LTD4 receptor, G-protein coupled receptor HG55, HMTMF81

Gene ID: 10800

NCBI Accession: [NM_001282186](#)

UniProt: [Q9Y271](#)

Application Details

Application Notes: Optimal working dilution should be determined by the investigator.

Restrictions: For Research Use only

Handling

Format: Lyophilized

Reconstitution: 50 µL double distilled water (DDW).

Concentration: 1 mg/mL

Buffer: Reconstituted antibody contains phosphate buffered saline (PBS), pH 7.4, 1 % BSA, 0.05 % Sodium azide.

Preservative: Sodium azide

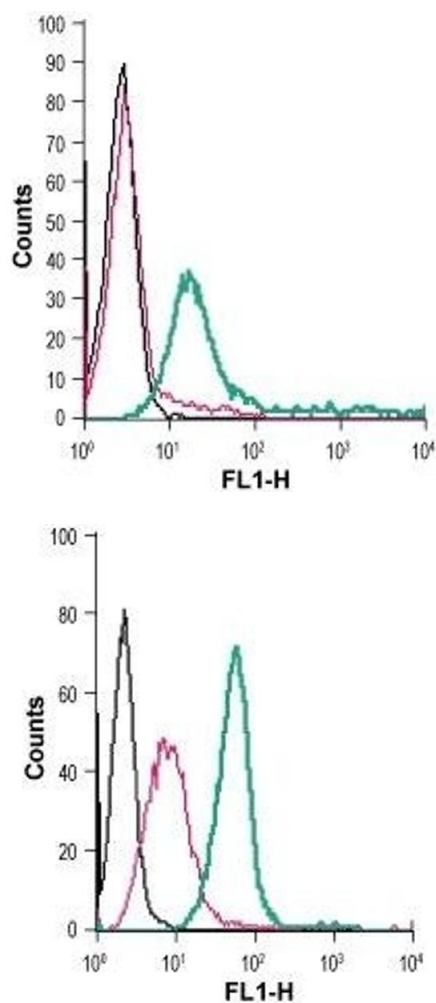
Precaution of Use: This product contains Sodium azide: a POISONOUS AND HAZARDOUS SUBSTANCE which should be handled by trained staff only.

Storage: RT, 4 °C, -20 °C

Storage Comment: Storage before reconstitution: The antibody ships as a lyophilized powder at room temperature. Upon arrival, it should be stored at -20°C.

Storage after reconstitution: The reconstituted solution can be stored at 4°C, protected from the light, for up to 1 week. For longer periods, small aliquots should be stored at -20°C. Avoid multiple freezing and thawing. Centrifuge all antibody preparations before use (10000 x g 5

min).



Flow Cytometry

Image 1. Cell surface detection of CysLTR1 in live intact human Jurkat T-cell leukemia cells: (black line) Cells.(red line) Cells + Rabbit IgG isotype control-FITC.(green line) Cells + Anti-CysLTR1 (extracellular)-FITC Antibody (ABIN7043094, ABIN7045575, ABIN7045576 and ABIN7045577), (2.5 µg).

Flow Cytometry

Image 2. Cell surface detection of CysLTR1 in live intact mouse J774 macrophage cells: (black line) Cells.(red line) Cells + Rabbit IgG isotype control-FITC.(green line) Cells + Anti-CysLTR1 (extracellular)-FITC Antibody (ABIN7043094, ABIN7045575, ABIN7045576 and ABIN7045577), (2.5 µg).