

Datasheet for ABIN7043095

anti-CasLTR2 antibody (3rd Extracellular Loop)**2** Images[Go to Product page](#)

Overview

Quantity:	50 µL
Target:	CasLTR2 (CYSLTR2)
Binding Specificity:	3rd Extracellular Loop, AA 270-284
Reactivity:	Human
Host:	Rabbit
Clonality:	Polyclonal
Application:	Western Blotting (WB), Flow Cytometry (FACS)

Product Details

Immunogen:	Immunogen: Synthetic peptide Immunogen Sequence: (C)HLTTWKVGL(S)KDRLH, corresponding to amino acid residues 270-284 of human CysLTR2
Isotype:	IgG
Cross-Reactivity (Details):	Not recommended for use with rat and mouse samples.
Characteristics:	Anti-Human CysLTR2 (extracellular) Antibody (ABIN7043095 and ABIN7044560)) is a highly specific antibody directed against an epitope of the human protein. The antibody can be used in western blot and indirect live cell flow cytometry applications. It has been designed to recognize CysLTR2 from human samples only.
Purification:	Affinity purified on immobilized antigen.

Target Details

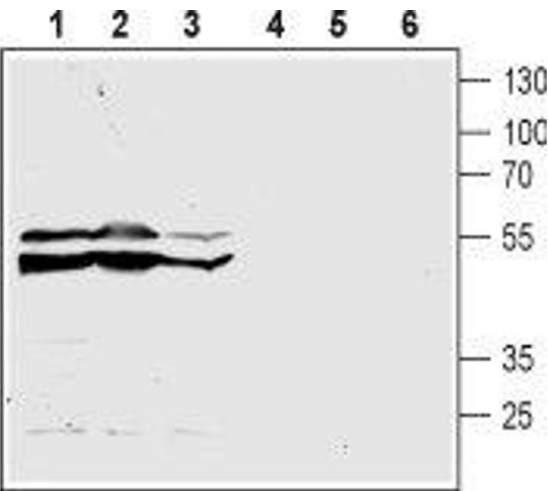
Target:	CasLTR2 (CYSLTR2)
Alternative Name:	CysLTR2 (CYSLTR2 Products)
Background:	Alternative names: CysLTR2, CYSLT2, Cysteinyl leukotriene receptor 2, hGPCR21, G-protein coupled receptor HG57
Gene ID:	57105
NCBI Accession:	NM_001308465
UniProt:	Q9NS75

Application Details

Application Notes:	Optimal working dilution should be determined by the investigator.
Restrictions:	For Research Use only

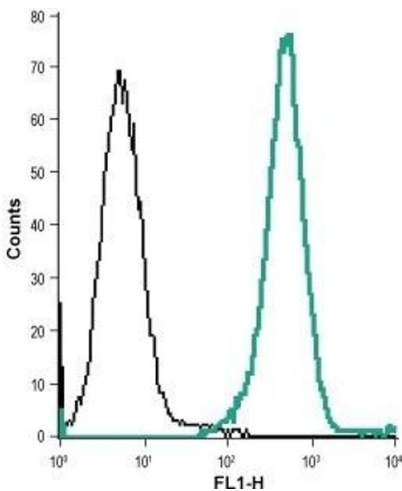
Handling

Format:	Lyophilized
Reconstitution:	50 µL or 0.2 mL double distilled water (DDW), depending on the sample size.
Concentration:	0.8 mg/mL
Buffer:	Reconstituted antibody contains phosphate buffered saline (PBS), pH 7.4, 1 % BSA, 0.05 % Sodium azide.
Preservative:	Sodium azide
Precaution of Use:	This product contains Sodium azide: a POISONOUS AND HAZARDOUS SUBSTANCE which should be handled by trained staff only.
Storage:	RT, 4 °C, -20 °C
Storage Comment:	<p>Storage before reconstitution: The antibody ships as a lyophilized powder at room temperature. Upon arrival, it should be stored at -20°C.</p> <p>Storage after reconstitution: The reconstituted solution can be stored at 4°C for up to 1 week. For longer periods, small aliquots should be stored at -20°C. Avoid multiple freezing and thawing. Centrifuge all antibody preparations before use (10000 x g 5 min).</p>



Western Blotting

Image 1. Western blot analysis of acute monocytic leukemia THP-1 (lanes 1 and 4), promyelocytic leukemia HL-60 (lanes 2 and 5) and chronic myelogenous leukemia K562 (lanes 3 and 6) human cell lysates: - 1-3. Anti-Human CysLTR2 (extracellular) Antibody (ABIN7043095 and ABIN7044560), (1:200). 4-6. Anti-Human CysLTR2 (extracellular) Antibody, preincubated with Human CysLTR2 (extracellular) Blocking Peptide (#BLP-LR004).



Flow Cytometry

Image 2. Cell surface detection of CysLTR2 in live intact acute monocytic leukemia (THP-1) cells: (black line) Control cells + goat anti-rabbit-AlexaFluor-488. (green line) Cells + Anti-Human CysLTR2 (extracellular) Antibody (ABIN7043095 and ABIN7044560), (1:50) + goat anti-rabbit-AlexaFluor-488.