

Datasheet for ABIN7043097

anti-DPYSL2 antibody (Intracellular)[Go to Product page](#)**2** Images

Overview

Quantity:	50 µL
Target:	DPYSL2
Binding Specificity:	AA 504-517, Intracellular
Reactivity:	Human, Mouse, Rat
Host:	Rabbit
Clonality:	Polyclonal
Conjugate:	This DPYSL2 antibody is un-conjugated
Application:	Western Blotting (WB)

Product Details

Immunogen:	Immunogen: Synthetic peptide Immunogen Sequence: CEVSVTPKTVTPAS, corresponding to amino acid residues 504-517 of rat CRMP2
Isotype:	IgG
Characteristics:	Anti-CRMP2 Antibody (ABIN7043097, ABIN7044542 and ABIN7044543)) is a highly specific antibody directed against an epitope of the rat protein. The antibody can be used in western blot analysis. It has been designed to recognize CRMP-2 from rat, mouse, and human samples.
Purification:	Affinity purified on immobilized antigen.

Target Details

Target:	DPYSL2
---------	--------

Target Details

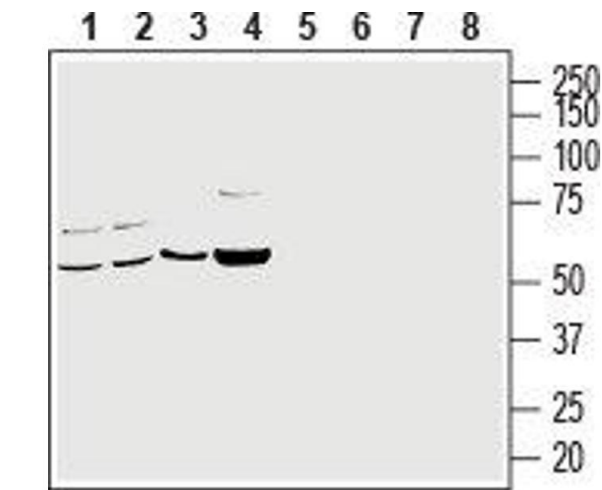
Alternative Name:	CRMP2 (DPYSL2 Products)
Background:	Alternative names: CRMP2, CRMP-2, Collapsin response mediator protein 2, Dihydropyrimidinase-related protein 2, DHPRP2, DRP-2, Dpysl2, Turned on after division 64 kDa protein, TOAD-64, Ulip2, Unc-33-like phosphoprotein 2
Gene ID:	25416
NCBI Accession:	NM_001386
UniProt:	P47942
Pathways:	Regulation of Cell Size

Application Details

Application Notes:	Optimal working dilution should be determined by the investigator.
Restrictions:	For Research Use only

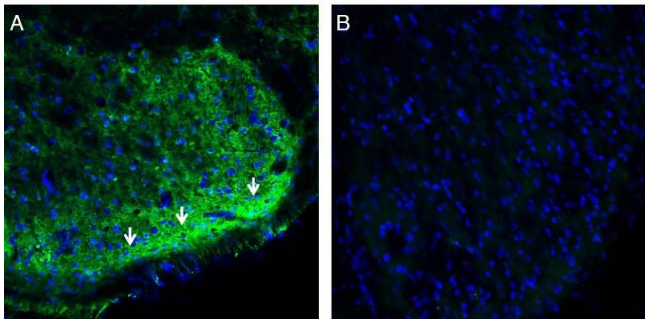
Handling

Format:	Lyophilized
Reconstitution:	25 µL, 50 µL or 0.2 mL double distilled water (DDW), depending on the sample size.
Concentration:	0.8 mg/mL
Buffer:	Reconstituted antibody contains phosphate buffered saline (PBS), pH 7.4, 1 % BSA, 0.05 % Sodium azide.
Preservative:	Sodium azide
Precaution of Use:	This product contains Sodium azide: a POISONOUS AND HAZARDOUS SUBSTANCE which should be handled by trained staff only.
Storage:	RT, 4 °C, -20 °C
Storage Comment:	<p>Storage before reconstitution: The antibody ships as a lyophilized powder at room temperature. Upon arrival, it should be stored at -20°C.</p> <p>Storage after reconstitution: The reconstituted solution can be stored at 4°C for up to 1 week. For longer periods, small aliquots should be stored at -20°C. Avoid multiple freezing and thawing. Centrifuge all antibody preparations before use (10000 x g 5 min).</p>



Western Blotting

Image 1. Western blot analysis of rat brain membrane (lanes 1 and 5), mouse brain membrane (lanes 2 and 6), human CCF-STTG1 brain astrocytoma (lanes 3 and 7) and rat PC-12 peochromocytoma (lanes 4 and 8) cell line lysates: - 1-3. Anti-CRMP2 Antibody (ABIN7043097, ABIN7044542 and ABIN7044543), (1:200). 4. Anti-CRMP2 Antibody (1:500).5-8. Anti-CRMP2 Antibody, preincubated with CRMP2 Blocking Peptide (#BLP-IP029).



Immunohistochemistry

Image 2. Expression of CRMP2 in rat spinal cord. - Immunohistochemical staining of perfusion-fixed frozen rat spinal cord sections sections with Anti-CRMP2 Antibody (ABIN7043097, ABIN7044542 and ABIN7044543), (1:300), followed by goat anti-rabbit-AlexaFluor-488. A. CRMP2 immunoreactivity (green) appears in the superficial layers of the dorsal horn (arrows). B. Pre-incubation of the antibody with CRMP2 Blocking Peptide (BLP-IP029), suppressed staining. Cell nuclei are stained with DAPI (blue)