

Datasheet for ABIN7043098
anti-DPP6 antibody (C-Term, Extracellular)



[Go to Product page](#)

4 Images

Overview

Quantity:	25 µL
Target:	DPP6
Binding Specificity:	AA 414-426, C-Term, Extracellular
Reactivity:	Human, Rat, Mouse
Host:	Rabbit
Clonality:	Polyclonal
Conjugate:	This DPP6 antibody is un-conjugated
Application:	Western Blotting (WB), Immunohistochemistry (IHC), Immunofluorescence (IF)

Product Details

Immunogen:	Immunogen: Synthetic peptide Immunogen Sequence: (C)KKHEDESEAWLHR, corresponding to amino acid residues 414-426 of human DPP6
Isotype:	IgG
Characteristics:	Anti-DPP6 (extracellular) Antibody (ABIN7043098, ABIN7045042 and ABIN7045043)) is a highly specific antibody directed against an epitope of the human protein. The antibody can be used in western blot and immunohistochemistry applications. The antibody recognizes an extracellular epitope and is thus ideal for detecting the protein in living cells. It has been designed to recognize DPP6 from rat, mouse, and human samples.
Purification:	Affinity purified on immobilized antigen.

Target Details

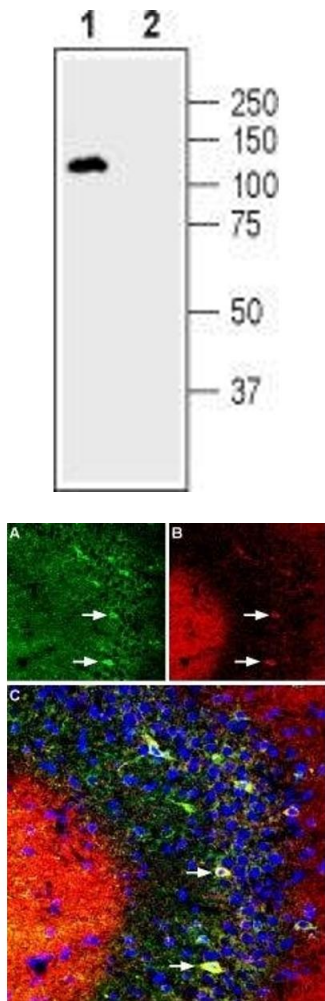
Target:	DPP6
Alternative Name:	DPP6 (DPP6 Products)
Background:	Alternative names: DPP6, Dipeptidyl peptidase 6, Dipeptidyl aminopeptidase-like protein 6, DPP VI, DPPX, VF2
Gene ID:	1804
NCBI Accession:	NM_130797
UniProt:	P42658

Application Details

Application Notes:	Optimal working dilution should be determined by the investigator.
Restrictions:	For Research Use only

Handling

Format:	Lyophilized
Reconstitution:	25 µL, 50 µL or 0.2 mL double distilled water (DDW), depending on the sample size.
Concentration:	0.8 mg/mL
Buffer:	Reconstituted antibody contains phosphate buffered saline (PBS), pH 7.4, 1 % BSA, 0.05 % Sodium azide.
Preservative:	Sodium azide
Precaution of Use:	This product contains Sodium azide: a POISONOUS AND HAZARDOUS SUBSTANCE which should be handled by trained staff only.
Storage:	RT, 4 °C, -20 °C
Storage Comment:	<p>Storage before reconstitution: The antibody ships as a lyophilized powder at room temperature. Upon arrival, it should be stored at -20°C.</p> <p>Storage after reconstitution: The reconstituted solution can be stored at 4°C for up to 1 week. For longer periods, small aliquots should be stored at -20°C. Avoid multiple freezing and thawing. Centrifuge all antibody preparations before use (10000 x g 5 min).</p>



Western Blotting

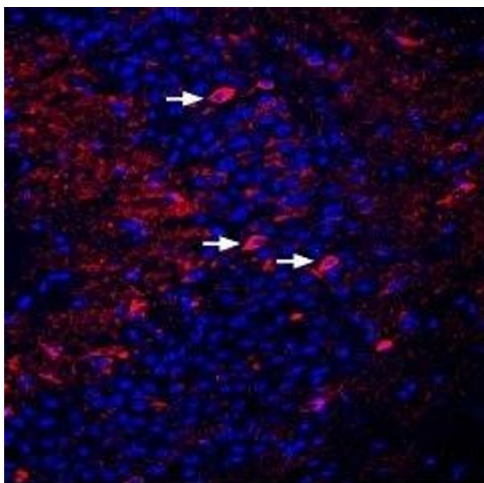
Image 1. Western blot analysis of human SH-SY5Y neuroblastoma cell lysate: - 1. Anti-DPP6 (extracellular) Antibody (ABIN7043098, ABIN7045042 and ABIN7045043), (1:500). 2. Anti-DPP6 (extracellular) Antibody, preincubated with DPP6 (extracellular) Blocking Peptide (#BLP-PC146).

Immunohistochemistry

Image 2. Multiplex staining of DPP6 and KV4.2 in rat hippocampus - Immunohistochemical staining of immersion-fixed, free floating rat brain frozen sections using rabbit Anti-DPP6 (extracellular) Antibody (ABIN7043098, ABIN7045042 and ABIN7045043), (1:400) and Guinea pig Anti-KV4.2 Antibody (ABIN7043533, ABIN7045394 and ABIN7045395), (1:1000). A. DPP6 (green) is expressed in the CA3 rat hippocampal region. B. KV4.2 (red) is expressed in the same region. C. Merge of the two images demonstrates partial colocalization in neurons of the CA3 region (arrows). Cell nuclei are stained with DAPI (blue).

Immunohistochemistry

Image 3. Expression of DPP6 in mouse hippocampus - Immunohistochemical staining of perfusion-fixed frozen mouse brain sections using Anti-DPP6 (extracellular) Antibody (ABIN7043098, ABIN7045042 and ABIN7045043), (1:400), followed by donkey anti-rabbit-Cy3 antibody (red). Staining in the hippocampal CA3 region appears in interneurons (arrows). DAPI is used to stain nuclei (blue).



Please check the [product details page](#) for more images. Overall 4 images are available for ABIN7043098.