



[Go to Product page](#)

Datasheet for ABIN7043099  
**anti-DPP10 antibody (C-Term, Extracellular)**

3 Images

Overview

Quantity:	25 µL
Target:	DPP10
Binding Specificity:	AA 356-370, C-Term, Extracellular
Reactivity:	Human, Mouse, Rat
Host:	Rabbit
Clonality:	Polyclonal
Conjugate:	This DPP10 antibody is un-conjugated
Application:	Western Blotting (WB), Immunohistochemistry (IHC), Immunofluorescence (IF)

Product Details

Immunogen:	Immunogen: Synthetic peptide Immunogen Sequence: CSRKYEMTSDTWISK, corresponding to amino acid residues 356-370 of rat DPP10
Isotype:	IgG
Characteristics:	Anti-DPP10 (extracellular) Antibody (ABIN7043099, ABIN7045044 and ABIN7045045) is a highly specific antibody directed against an epitope of the rat protein. The antibody can be used in western blot and immunohistochemistry applications. The antibody recognizes an extracellular epitope and is thus ideal for detecting the protein in living cells. It has been designed to recognize DPP10 from rat, mouse, and human samples.
Purification:	Affinity purified on immobilized antigen.

## Target Details

---

Target:	DPP10
Alternative Name:	DPP10 ( <a href="#">DPP10 Products</a> )
Background:	Alternative names: DPP10, Inactive dipeptidyl peptidase 10, Dipeptidyl peptidase X, DPP X, DPPY, DPL2, DPRP3
Gene ID:	363972
NCBI Accession:	<a href="#">NM_020868</a>
UniProt:	<a href="#">Q6Q629</a>

## Application Details

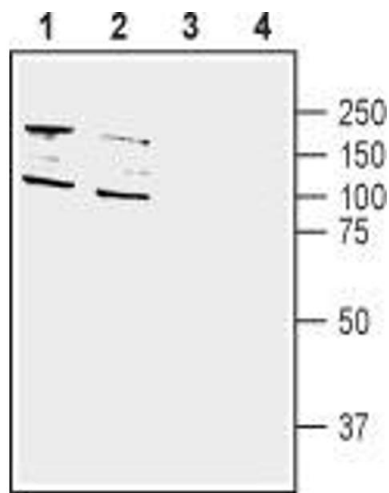
---

Application Notes:	Optimal working dilution should be determined by the investigator.
Restrictions:	For Research Use only

## Handling

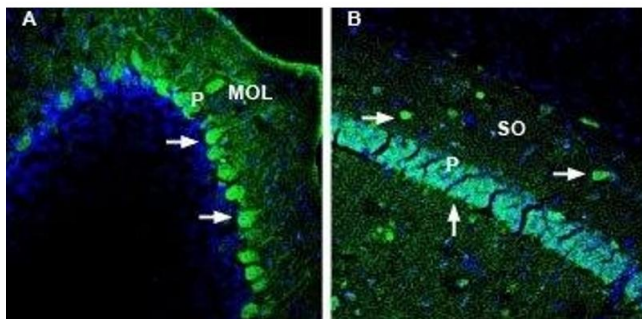
---

Format:	Lyophilized
Reconstitution:	25 µL, 50 µL or 0.2 mL double distilled water (DDW), depending on the sample size.
Concentration:	0.8 mg/mL
Buffer:	Reconstituted antibody contains phosphate buffered saline (PBS), pH 7.4, 1 % BSA, 0.05 % Sodium azide.
Preservative:	Sodium azide
Precaution of Use:	This product contains Sodium azide: a POISONOUS AND HAZARDOUS SUBSTANCE which should be handled by trained staff only.
Storage:	RT, 4 °C, -20 °C
Storage Comment:	Storage before reconstitution: The antibody ships as a lyophilized powder at room temperature. Upon arrival, it should be stored at -20°C. Storage after reconstitution: The reconstituted solution can be stored at 4°C for up to 1 week. For longer periods, small aliquots should be stored at -20°C. Avoid multiple freezing and thawing. Centrifuge all antibody preparations before use (10000 x g 5 min).



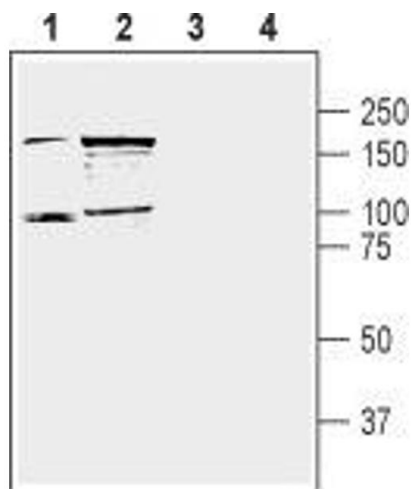
### Western Blotting

**Image 1.** Western blot analysis of human SH-SY5Y neuroblastoma (lane 1 and 3) and human HT-29 colon adenocarcinoma (lanes 2 and 4) cell line lysate: - 1,2. Anti-DPP10 (extracellular) Antibody (ABIN7043099, ABIN7045044 and ABIN7045045), (1:200).3,4. Anti-DPP10 (extracellular) Antibody, preincubated with DPP10 (extracellular) Blocking Peptide (#BLP-PC147).



### Immunohistochemistry

**Image 2.** Expression of DPP10 in mouse cerebellum and hippocampus - Immunohistochemical staining of perfusion-fixed frozen mouse brain sections with Anti-DPP10 (extracellular) Antibody (ABIN7043099, ABIN7045044 and ABIN7045045), (1:1000), followed by goat anti-rabbit-AlexaFluor-488. A. DPP10 immunoreactivity (green) in mouse cerebellum is detected in the Purkinje cell layer (P) in Purkinje cells (arrows) and diffusely in the molecular layer (MOL). B. DPP10 staining (green) in mouse hippocampal CA1 region is observed in the pyramidal layer (P, vertical arrow) and interneurons in the stratum oriens (SO, horizontal arrows). Cell nuclei are stained with DAPI (blue).



### Western Blotting

**Image 3.** Western blot analysis of mouse (lanes 1 and 3) and rat (lanes 2 and 4) brain lysate: - 1,2. Anti-DPP10 (extracellular) Antibody (ABIN7043099, ABIN7045044 and ABIN7045045), (1:400).3,4. Anti-DPP10 (extracellular) Antibody, preincubated with DPP10 (extracellular) Blocking Peptide (#BLP-PC147).