

Datasheet for ABIN7043115
anti-F4/80 antibody (Extracellular, N-Term)



[Go to Product page](#)

3 Images

Overview

Quantity:	25 µL
Target:	F4/80 (EMR1)
Binding Specificity:	AA 58-72, Extracellular, N-Term
Reactivity:	Mouse, Human, Rat
Host:	Rabbit
Clonality:	Polyclonal
Conjugate:	This F4/80 antibody is un-conjugated
Application:	Western Blotting (WB), Immunofluorescence (IF), Immunocytochemistry (ICC), Live Cell Imaging (LCI)

Product Details

Immunogen:	Immunogen: Synthetic peptide Immunogen Sequence: CKQGFLSSNGQNHFK, corresponding to amino acid residues 58-72 of human EMR1
Isotype:	IgG
Characteristics:	Anti-EMR1 (ADGRE1) (extracellular) Antibody (ABIN7043115, ABIN7044269 and ABIN7044270)) is a highly specific antibody directed against an epitope of the human protein. The antibody can be used in western blot and live cell imaging applications. It recognizes an extracellular epitope and is thus ideal for detecting the receptor in living cells. It has been designed to recognize EMR1 from human, mouse, and rat samples.
Purification:	Affinity purified on immobilized antigen.

Target Details

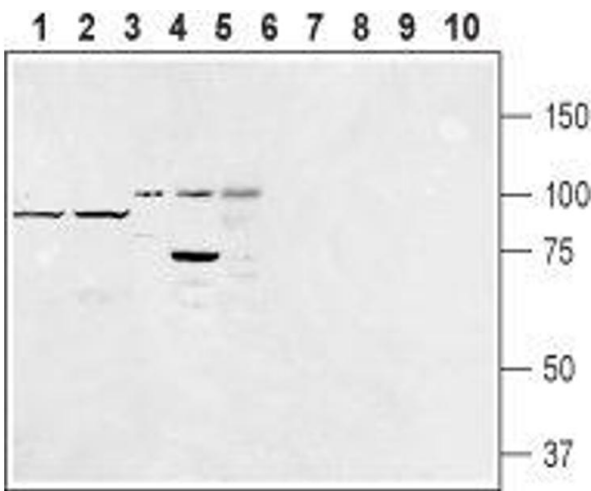
Target:	F4/80 (EMR1)
Alternative Name:	EMR1 (ADGRE1) (EMR1 Products)
Background:	Alternative names: EMR1 (ADGRE1), EMR1 hormone receptor, EGF-like module-containing mucin-like hormone receptor-like 1, Adhesion G protein-coupled receptor E1, TM7LN3, F4/80, GPF480
Gene ID:	2015
NCBI Accession:	NM_001256252
UniProt:	Q14246

Application Details

Application Notes:	Optimal working dilution should be determined by the investigator.
Restrictions:	For Research Use only

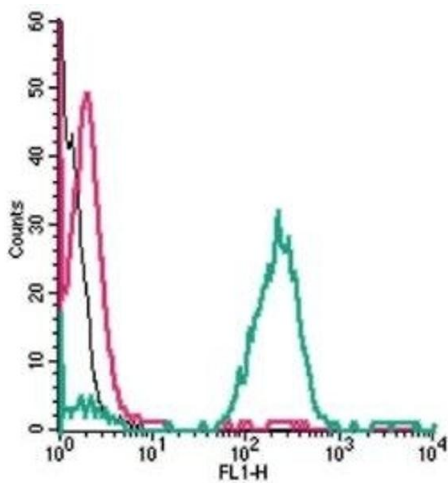
Handling

Format:	Lyophilized
Reconstitution:	25 µL, 50 µL or 0.2 mL double distilled water (DDW), depending on the sample size.
Concentration:	0.8 mg/mL
Buffer:	Reconstituted antibody contains phosphate buffered saline (PBS), pH 7.4, 1 % BSA, 0.05 % Sodium azide.
Preservative:	Sodium azide
Precaution of Use:	This product contains Sodium azide: a POISONOUS AND HAZARDOUS SUBSTANCE which should be handled by trained staff only.
Storage:	RT, 4 °C, -20 °C
Storage Comment:	<p>Storage before reconstitution: The antibody ships as a lyophilized powder at room temperature. Upon arrival, it should be stored at -20°C.</p> <p>Storage after reconstitution: The reconstituted solution can be stored at 4°C for up to 1 week. For longer periods, small aliquots should be stored at -20°C. Avoid multiple freezing and thawing. Centrifuge all antibody preparations before use (10000 x g 5 min).</p>



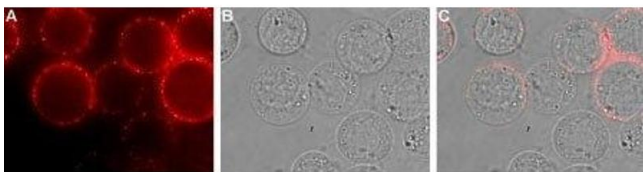
Western Blotting

Image 1. Western blot analysis of rat fat (lanes 1 and 6), mouse fat (lanes 2 and 7), human Burkitt's lymphoma (Raji) (lanes 3 and 8), rat basophilic leukemia (RBL) (lanes 4 and 9) and human promyelocytic leukemia (HL-60) (lanes 5 and 10) lysates: - 1-5. Anti-EMR1 (ADGRE1) (extracellular) Antibody (ABIN7043115, ABIN7044269 and ABIN7044270), (1:400).6-10. Anti-EMR1 (ADGRE1) (extracellular) Antibody, preincubated with EMR1/ADGRE1 (extracellular) Blocking Peptide (#BLP-ER051).



Flow Cytometry

Image 2. Cell surface detection of EMR1 (F4/80) by indirect flow cytometry in live intact human THP-1 monocytic leukemia cells: (black line) Cells.(red line) Cells + goat-anti-rabbit-FITC.(green line) Cells + Anti-EMR1 (ADGRE1) (extracellular) Antibody (ABIN7043115, ABIN7044269 and ABIN7044270), (2.5 µg) + goat-anti-rabbit-FITC.



Immunocytochemistry

Image 3. Expression of EMR1 in rat RBL cells - Cell surface detection of EMR1 in intact living rat basophilic leukemia (RBL) cells. A. Extracellular staining of cells using Anti-EMR1 (ADGRE1) (extracellular) Antibody (ABIN7043115, ABIN7044269 and ABIN7044270), followed by goat anti-rabbit-AlexaFluor-594 secondary antibody (red), (1:100). B. Live view of the cells. C. Merged image of panels A and B.