

Datasheet for ABIN7043116

anti-F4/80 antibody (Extracellular, N-Term) (FITC)



[Go to Product page](#)

2 Images

Overview

Quantity:	50 µL
Target:	F4/80 (EMR1)
Binding Specificity:	AA 58-72, Extracellular, N-Term
Reactivity:	Mouse, Human, Rat
Host:	Rabbit
Clonality:	Polyclonal
Conjugate:	This F4/80 antibody is conjugated to FITC
Application:	Flow Cytometry (FACS)

Product Details

Immunogen:	<p>Immunogen: Synthetic peptide</p> <p>Immunogen Sequence: CKQGFLSSNGQNHFK, corresponding to amino acid residues 58-72 of human EMR1</p>
Isotype:	IgG
Characteristics:	<p>Anti-EMR1 (ADGRE1) (extracellular) Antibody (ABIN7043115, ABIN7044269 and ABIN7044270)) is a highly specific antibody directed against an epitope of the human protein. The antibody can be used in western blot and live cell imaging applications. It recognizes an extracellular epitope and is thus ideal for detecting the receptor in living cells. It has been designed to recognize EMR1 from human, mouse, and rat samples.</p> <p>Anti-EMR1 (ADGRE1) (extracellular)-FITC Antibody (ABIN7043115, ABIN7044269 and ABIN7044270)-F is directly conjugated to fluorescein isothiocyanate (FITC). The antibody can be used in immunofluorescent applications such as direct live cell flow cytometry.</p>

Product Details

Purification: Affinity purified on immobilized antigen.

Target Details

Target: F4/80 (EMR1)

Alternative Name: EMR1 (ADGRE1) ([EMR1 Products](#))

Background: Alternative names: EMR1 (ADGRE1), EMR1 hormone receptor, EGF-like module-containing mucin-like hormone receptor-like 1, Adhesion G protein-coupled receptor E1, TM7LN3, F4/80, GPF480

Gene ID: 2015

NCBI Accession: [NM_001256252](#)

UniProt: [Q14246](#)

Application Details

Application Notes: Optimal working dilution should be determined by the investigator.

Restrictions: For Research Use only

Handling

Format: Lyophilized

Reconstitution: 50 µL double distilled water (DDW).

Concentration: 1 mg/mL

Buffer: Reconstituted antibody contains phosphate buffered saline (PBS), pH 7.4, 1 % BSA, 0.05 % Sodium azide.

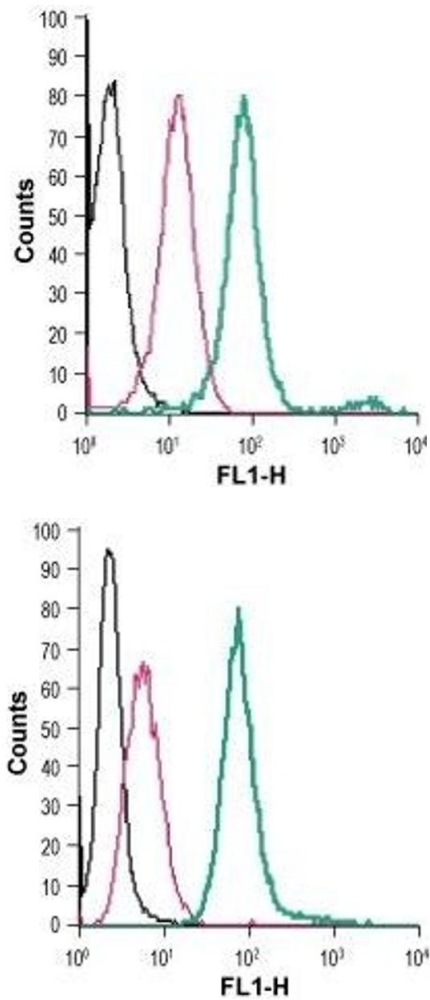
Preservative: Sodium azide

Precaution of Use: This product contains Sodium azide: a POISONOUS AND HAZARDOUS SUBSTANCE which should be handled by trained staff only.

Storage: RT, 4 °C, -20 °C

Storage Comment: Storage before reconstitution: The antibody ships as a lyophilized powder at room temperature. Upon arrival, it should be stored at -20°C.
Storage after reconstitution: The reconstituted solution can be stored at 4°C, protected from the light, for up to 1 week. For longer periods, small aliquots should be stored at -20°C. Avoid

multiple freezing and thawing. Centrifuge all antibody preparations before use (10000 x g 5 min).



Flow Cytometry

Image 1. Cell surface detection of EMR1 in live intact human THP-1 monocytic leukemia cells: (black line) Cells.(red line) Cells + Rabbit IgG isotype control-FITC.(green line) Cells + Anti-EMR1 (ADGRE1) (extracellular)-FITC Antibody (ABIN7043116, ABIN7045518, ABIN7045519 and ABIN7045520), (2.5 µg).

Flow Cytometry

Image 2. Cell surface detection of EMR1 in live intact mouse J774 macrophage cells: (black line) Cells.(red line) Cells + Rabbit IgG isotype control-FITC.(green line) Cells + Anti-EMR1 (ADGRE1) (extracellular)-FITC Antibody (ABIN7043116, ABIN7045518, ABIN7045519 and ABIN7045520), (2.5 µg).