

Datasheet for ABIN7043117
anti-F4/80 antibody (Extracellular, N-Term)

3 Images

[Go to Product page](#)

Overview

Quantity:	0.2 mL
Target:	F4/80 (EMR1)
Binding Specificity:	AA 58-72, Extracellular, N-Term
Reactivity:	Mouse, Human, Rat
Host:	Guinea Pig
Clonality:	Polyclonal
Conjugate:	This F4/80 antibody is un-conjugated
Application:	Western Blotting (WB)

Product Details

Immunogen:	Immunogen: Synthetic peptide
	Immunogen Sequence: CKQGFLSSNGQNHFK, corresponding to amino acid residues 58-72 of human EMR1
Isotype:	IgG
Characteristics:	Guinea pig Anti-EMR1 (ADGRE1) (extracellular) Antibody (#) raised in guinea pig, is a highly specific antibody directed against an epitope of the human protein. The antibody can be used in western blot analysis. It has been designed to recognize ADGRE1 from mouse, rat and human samples. The antigen used to immunize guinea pigs is the same as Anti-EMR1 (ADGRE1) (extracellular) Antibody (ABIN7043115, ABIN7044269 and ABIN7044270)) raised in rabbit. Our line of guinea pig antibodies enables more flexibility with our products such as multiplex staining studies, immunoprecipitation, etc.

Product Details

Purification: Affinity purified on immobilized antigen.

Target Details

Target: F4/80 (EMR1)

Alternative Name: EMR1 (ADGRE1) ([EMR1 Products](#))

Background: Alternative names: MR1 hormone receptor, EGF-like module-containing mucin-like hormone receptor-like 1, Adhesion G protein-coupled receptor E1, TM7LN3, F4/80, GPF480

Gene ID: 2015

NCBI Accession: [NM_001256252](#)

UniProt: [Q14246](#)

Application Details

Application Notes: Optimal working dilution should be determined by the investigator.

Restrictions: For Research Use only

Handling

Format: Lyophilized

Reconstitution: 25 µL, 50 µL or 0.2 mL double distilled water (DDW), depending on the sample size.

Concentration: 0.8 mg/mL

Buffer: Reconstituted antibody contains phosphate buffered saline (PBS), pH 7.4, 1 % BSA, 0.05 % Sodium azide.

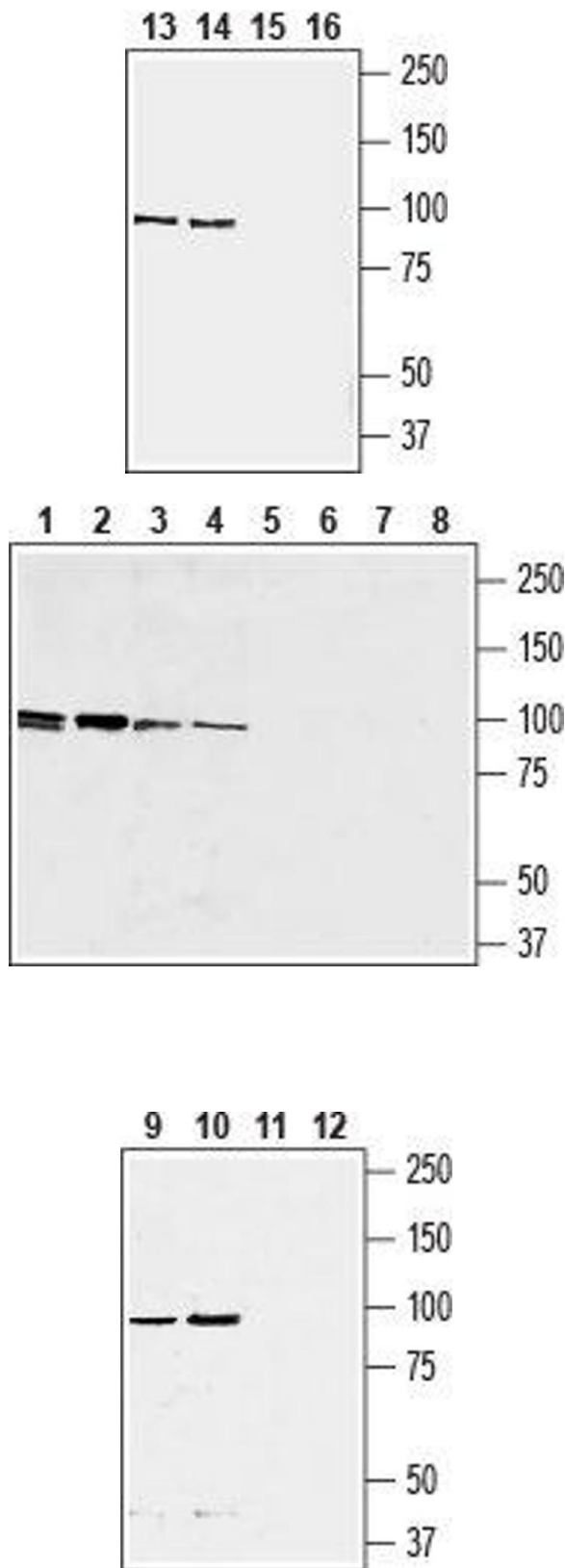
Preservative: Sodium azide

Precaution of Use: This product contains Sodium azide: a POISONOUS AND HAZARDOUS SUBSTANCE which should be handled by trained staff only.

Storage: RT, 4 °C, -20 °C

Storage Comment: Storage before reconstitution: The antibody ships as a lyophilized powder at room temperature. Upon arrival, it should be stored at -20°C.

Storage after reconstitution: The reconstituted solution can be stored at 4°C for up to 1 week. For longer periods, small aliquots should be stored at -20°C. Avoid multiple freezing and thawing. Centrifuge all antibody preparations before use (10000 x g 5 min).



Western Blotting

Image 1. Western blot analysis of rat (lanes 13 and 15) and mouse (lanes 14 and 16) spleen lysate: - 13, 14. Guinea pig Anti-EMR1 (ADGRE1) (extracellular) Antibody (ABIN7043117, ABIN7045450 and ABIN7045451), (1:200). 15, 16. Guinea pig Anti-EMR1 (ADGRE1) (extracellular) Antibody, preincubated with EMR1/ADGRE1 (extracellular) Blocking Peptide (#BLP-ER051).

Western Blotting

Image 2. Western blot analysis of human promyelocytic leukemia (HL-60) (lanes 1 and 5), human Burkitt's lymphoma (Raji) B (lanes 2 and 6), mouse macrophage J774 (lanes 3 and 7) and rat basophilic leukemia (RBL) (lanes 4 and 8) cell lysates: - 1-4. Guinea pig Anti-EMR1 (ADGRE1) (extracellular) Antibody (ABIN7043117, ABIN7045450 and ABIN7045451), (1:200). 5-8. Guinea pig Anti-EMR1 (ADGRE1) (extracellular) Antibody, preincubated with EMR1/ADGRE1 (extracellular) Blocking Peptide (#BLP-ER051).

Western Blotting

Image 3. Western blot analysis of rat (lanes 9 and 11) and mouse (lanes 10 and 12) fat tissue lysate: - 9, 10. Guinea pig Anti-EMR1 (ADGRE1) (extracellular) Antibody (ABIN7043117, ABIN7045450 and ABIN7045451), (1:200). 11, 12. Guinea pig Anti-EMR1 (ADGRE1) (extracellular) Antibody, preincubated with EMR1/ADGRE1 (extracellular) Blocking Peptide (#BLP-ER051).