

Datasheet for ABIN7043119

anti-Endothelin-1 Receptor antibody (C-Term, Intracellular)



[Go to Product page](#)

3 Images

Overview

Quantity:	25 µL
Target:	Endothelin-1 Receptor (EDNRA)
Binding Specificity:	AA 413-426, C-Term, Intracellular
Reactivity:	Mouse, Rat
Host:	Rabbit
Clonality:	Polyclonal
Conjugate:	This Endothelin-1 Receptor antibody is un-conjugated
Application:	Western Blotting (WB), Immunofluorescence (IF), Immunohistochemistry (IHC), Immunocytochemistry (ICC)

Product Details

Immunogen:	<p>Immunogen: Synthetic peptide</p> <p>Immunogen Sequence: (C)NHNTERSSHKDSMN, corresponding to amino acid residues 413-426 of rat ET-A</p>
Isotype:	IgG
Characteristics:	<p>Anti-Endothelin Receptor A Antibody (ABIN7043119, ABIN7044238 and ABIN7044239)) is a highly specific antibody directed against an epitope of the rat protein. The antibody can be used in western blot, immunocytochemistry, and immunohistochemistry applications. It has been designed to recognize ET-AR from rat, mouse, and human samples.</p>
Purification:	Affinity purified on immobilized antigen.

Target Details

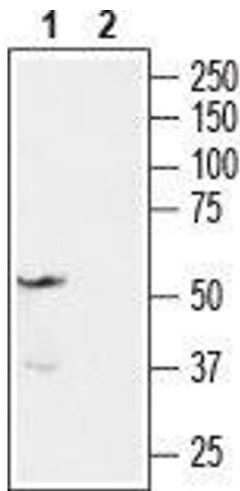
Target:	Endothelin-1 Receptor (EDNRA)
Alternative Name:	Endothelin Receptor A (EDNRA Products)
Background:	Alternative names: Endothelin Receptor A, EDNRA, ETA, ET-AR, ETRA, ET1-Specific type endothelin receptor, Endothelin-1 receptor
Gene ID:	24326
NCBI Accession:	NM_001166055
UniProt:	P26684
Pathways:	cAMP Metabolic Process

Application Details

Application Notes:	Optimal working dilution should be determined by the investigator.
Restrictions:	For Research Use only

Handling

Format:	Lyophilized
Reconstitution:	25 µL, 50 µL or 0.2 mL double distilled water (DDW), depending on the sample size.
Concentration:	0.9 mg/mL
Buffer:	Reconstituted antibody contains phosphate buffered saline (PBS), pH 7.4, 1 % BSA, 0.05 % Sodium azide.
Preservative:	Sodium azide
Precaution of Use:	This product contains Sodium azide: a POISONOUS AND HAZARDOUS SUBSTANCE which should be handled by trained staff only.
Storage:	RT, 4 °C, -20 °C
Storage Comment:	Storage before reconstitution: The antibody ships as a lyophilized powder at room temperature. Upon arrival, it should be stored at -20°C. Storage after reconstitution: The reconstituted solution can be stored at 4°C for up to 1 week. For longer periods, small aliquots should be stored at -20°C. Avoid multiple freezing and thawing. Centrifuge all antibody preparations before use (10000 x g 5 min).



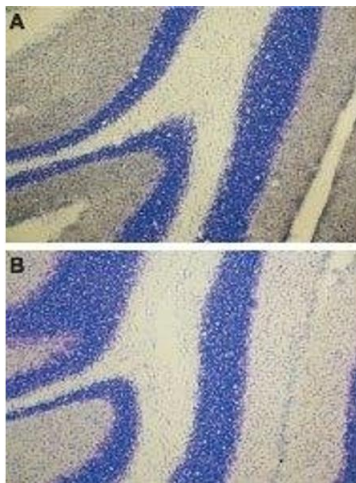
Western Blotting

Image 1. Western blot analysis of rat brain membranes: - 1. Anti-Endothelin Receptor A Antibody (ABIN7043119, ABIN7044238 and ABIN7044239), (1:200). 2. Anti-Endothelin Receptor A Antibody, preincubated with Endothelin Receptor A Blocking Peptide (#BLP-ER001).



Immunohistochemistry

Image 2. Expression of ET-A in rat lung - Immunohistochemical staining of paraffin embedded section of rat lung using Anti-Endothelin Receptor A Antibody (ABIN7043119, ABIN7044238 and ABIN7044239), (1:100). ET-A is expressed both in respiratory epithelium (black arrows) and in respiratory smooth muscle (red arrows). Hematoxylin is used as the counterstain.



Immunohistochemistry

Image 3. Expression of ET-A in rat cerebellum - Immunohistochemical staining of rat cerebellum using Anti-Endothelin Receptor A Antibody (ABIN7043119, ABIN7044238 and ABIN7044239) (A), and Anti-Endothelin Receptor A Antibody preincubated with the control peptide antigen (B). Cresyl violet is used as the counterstain.