

Datasheet for ABIN7043123

**anti-EPH Receptor A3 antibody (Extracellular, N-Term)**[Go to Product page](#)

## 4 Images

## Overview

Quantity:	50 µL
Target:	EPH Receptor A3 (EPHA3)
Binding Specificity:	AA 488-500, Extracellular, N-Term
Reactivity:	Human, Mouse, Rat
Host:	Rabbit
Clonality:	Polyclonal
Application:	Western Blotting (WB), Immunohistochemistry (IHC), Flow Cytometry (FACS), Immunofluorescence (IF)

## Product Details

Immunogen:	Immunogen: Synthetic peptide Immunogen Sequence: (C)RARGTNVTISLTK, corresponding to amino acid residues 488-500 of human EphA3
Isotype:	IgG
Characteristics:	Anti-EphA3 (extracellular) Antibody (ABIN7043123, ABIN7044245 and ABIN7044246)) is a highly specific antibody directed against an epitope of the human protein. The antibody can be used in western blot, immunohistochemistry and live cell flow cytometry applications. It has been designed to recognize EphA3 from human, rat, and mouse samples.
Purification:	Affinity purified on immobilized antigen.

## Target Details

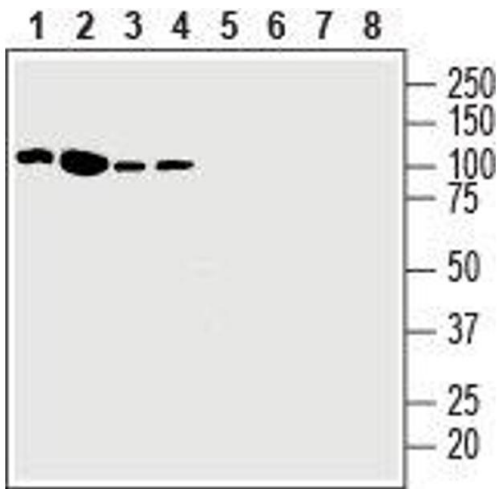
Target:	EPH Receptor A3 (EPHA3)
Alternative Name:	EphA3 ( <a href="#">EPHA3 Products</a> )
Background:	Alternative names: EphA3, Ephrin type-A receptor 3, EPH-like kinase 4, EK4, Tyrosine-protein kinase TYRO4
Gene ID:	2042
NCBI Accession:	<a href="#">NM_005233</a>
UniProt:	<a href="#">P29320</a>
Pathways:	<a href="#">RTK Signaling</a> , <a href="#">Regulation of Cell Size</a>

## Application Details

Application Notes:	Optimal working dilution should be determined by the investigator.
Restrictions:	For Research Use only

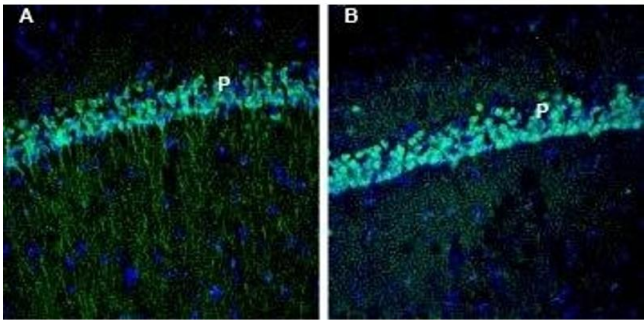
## Handling

Format:	Lyophilized
Reconstitution:	25 µL, 50 µL or 0.2 mL double distilled water (DDW), depending on the sample size.
Concentration:	0.8 mg/mL
Buffer:	Reconstituted antibody contains phosphate buffered saline (PBS), pH 7.4, 1 % BSA, 0.05 % Sodium azide.
Preservative:	Sodium azide
Precaution of Use:	This product contains Sodium azide: a POISONOUS AND HAZARDOUS SUBSTANCE which should be handled by trained staff only.
Storage:	RT, 4 °C, -20 °C
Storage Comment:	<p>Storage before reconstitution: The antibody ships as a lyophilized powder at room temperature. Upon arrival, it should be stored at -20°C.</p> <p>Storage after reconstitution: The reconstituted solution can be stored at 4°C for up to 1 week. For longer periods, small aliquots should be stored at -20°C. Avoid multiple freezing and thawing. Centrifuge all antibody preparations before use (10000 x g 5 min).</p>



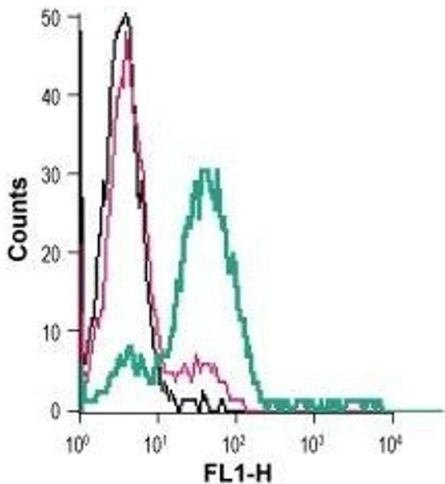
### Western Blotting

**Image 1.** Western blot analysis of human Jurkat T-cell leukemia cell line lysate (lanes 1 and 5), human K562 chronic myelogenous leukemia cell line lysate (lanes 2 and 6), human Malme-3M melanoma cell line lysate (lanes 3 and 7) and human HT-29 colorectal adenocarcinoma cell line lysate (lanes 4 and 8): - 1-4. Anti-EphA3 (extracellular) Antibody (ABIN7043123, ABIN7044245 and ABIN7044246), (1:200).5-8. Anti-EphA3 (extracellular) Antibody, preincubated with EphA3 (extracellular) Blocking Peptide (#BLP-ER013).



### Immunohistochemistry

**Image 2.** Expression of EphA3 in rat and mouse hippocampus - Immunohistochemical staining of perfusion-fixed frozen rat and mouse brain sections with Anti-EphA3 (extracellular) Antibody (ABIN7043123, ABIN7044245 and ABIN7044246), (1:200), followed by goat anti-rabbit-AlexaFluor-488. A. EphA3 staining (green) in rat hippocampal CA1 region is detected in the pyramidal layer (P). B. In mouse hippocampal CA1 region, EphA3 immunoreactivity (green) is observed in the pyramidal layer (P). Cell nuclei are stained with DAPI (blue).



### Flow Cytometry

**Image 3.** Cell surface detection of EphA3 in live intact human Jurkat T-cell leukemia cells: (black line) Cells.(red line) Cells + goat-anti-rabbit-FITC.(green line) Cells + Anti-EphA3 (extracellular) Antibody (ABIN7043123, ABIN7044245 and ABIN7044246), (5 µg) + goat-anti-rabbit-FITC.

Please check the [product details page](#) for more images. Overall 4 images are available for ABIN7043123.