

Datasheet for ABIN7043125

anti-EPH Receptor A6 antibody (Extracellular, N-Term)[Go to Product page](#)

4 Images

Overview

Quantity:	0.2 mL
Target:	EPH Receptor A6 (Epha6)
Binding Specificity:	AA 482-495, Extracellular, N-Term
Reactivity:	Human, Mouse, Rat
Host:	Rabbit
Clonality:	Polyclonal
Application:	Western Blotting (WB), Immunohistochemistry (IHC), Flow Cytometry (FACS)

Product Details

Immunogen:	Immunogen: Synthetic peptide Immunogen Sequence: (C)KEHEQLTYSSTRSK, corresponding to amino acid residues 482-495 of rat EphA6
Isotype:	IgG
Characteristics:	Anti-EphA6 (extracellular) Antibody (ABIN7043125, ABIN7044247 and ABIN7044248)) is a highly specific antibody directed against an epitope of the rat protein. The antibody can be used in western blot, indirect live cell flow cytometry, and immunohistochemistry applications. It has been designed to recognize EphA6 from rat, mouse, and human samples.
Purification:	Affinity purified on immobilized antigen.

Target Details

Target:	EPH Receptor A6 (Epha6)
---------	-------------------------

Target Details

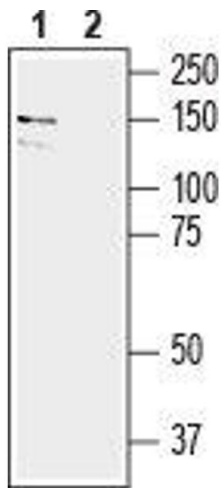
Alternative Name:	EphA6 (Epha6 Products)
Background:	Alternative names: Ephrin type-A receptor 6, EPH receptor A6, EPH homology kinase 2, EHK-2
Gene ID:	29202
NCBI Accession:	NM_001080448
UniProt:	P54758
Pathways:	RTK Signaling

Application Details

Application Notes:	Optimal working dilution should be determined by the investigator.
Restrictions:	For Research Use only

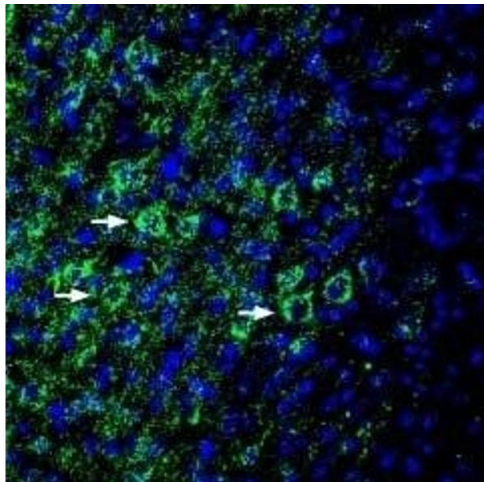
Handling

Format:	Lyophilized
Reconstitution:	25 µL, 50 µL or 0.2 mL double distilled water (DDW), depending on the sample size.
Concentration:	0.8 mg/mL
Buffer:	Reconstituted antibody contains phosphate buffered saline (PBS), pH 7.4, 1 % BSA, 0.05 % Sodium azide.
Preservative:	Sodium azide
Precaution of Use:	This product contains Sodium azide: a POISONOUS AND HAZARDOUS SUBSTANCE which should be handled by trained staff only.
Storage:	RT, 4 °C, -20 °C
Storage Comment:	<p>Storage before reconstitution: The antibody ships as a lyophilized powder at room temperature. Upon arrival, it should be stored at -20°C.</p> <p>Storage after reconstitution: The reconstituted solution can be stored at 4°C for up to 1 week. For longer periods, small aliquots should be stored at -20°C. Avoid multiple freezing and thawing. Centrifuge all antibody preparations before use (10000 x g 5 min).</p>



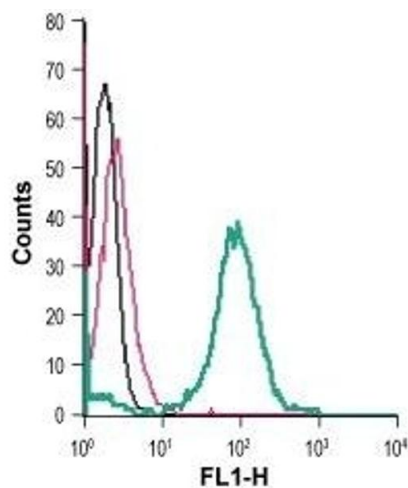
Western Blotting

Image 1. Western blot analysis of human LNCaP prostate adenocarcinoma cell line lysate: - 1. Anti-EphA6 (extracellular) Antibody (ABIN7043125, ABIN7044247 and ABIN7044248), (1:400). 2. Anti-EphA6 (extracellular) Antibody, preincubated with EphA6 (extracellular) Blocking Peptide (#BLP-ER016).



Immunohistochemistry

Image 2. Expression of EphA6 in rat parietal cortex - Immunohistochemical staining of perfusion-fixed frozen rat brain sections with Anti-EphA6 (extracellular) Antibody (ABIN7043125, ABIN7044247 and ABIN7044248), (1:200), followed by goat anti-rabbit-AlexaFluor-488. EphA6 immunoreactivity (green) appears in pyramidal cells (arrows). Cell nuclei are stained with DAPI (blue).



Flow Cytometry

Image 3. Cell surface detection of EphA6 in live intact human THP-1 monocytic leukemia cells: (black line) Cells.(red line) Cells + goat-anti-rabbit-FITC.(green line) Cells + Anti-EphA6 (extracellular) Antibody (ABIN7043125, ABIN7044247 and ABIN7044248), (2.5 µg) + goat-anti-rabbit-FITC.

Please check the [product details page](#) for more images. Overall 4 images are available for ABIN7043125.