

Datasheet for ABIN7043126

anti-EPH Receptor B1 antibody (Extracellular, N-Term)**3** Images[Go to Product page](#)

Overview

| | |
|----------------------|--|
| Quantity: | 25 µL |
| Target: | EPH Receptor B1 (EPHB1) |
| Binding Specificity: | AA 485-497, Extracellular, N-Term |
| Reactivity: | Human, Mouse, Rat |
| Host: | Rabbit |
| Clonality: | Polyclonal |
| Conjugate: | This EPH Receptor B1 antibody is un-conjugated |
| Application: | Western Blotting (WB), Immunofluorescence (IF), Flow Cytometry (FACS), Immunocytochemistry (ICC), Live Cell Imaging (LCI) |

Product Details

| | |
|------------------|---|
| Immunogen: | Immunogen: Synthetic peptide Immunogen Sequence: (C)RSQTNTARIDGLR, corresponding to amino acid residues 485-497 of mouse EphB1 |
| Isotype: | IgG |
| Characteristics: | Anti-EphB1 (extracellular) Antibody is directed against an extracellular epitope of mouse EphB1. Anti-EphB1 (extracellular) Antibody (ABIN7043126, ABIN7044251 and ABIN7044252)) can be used in western blot, immunocytochemistry and indirect flow cytometry applications. The antibody is suitable for live cell imaging. It has been designed to recognize EphB1 from rat, mouse, and human samples. |
| Purification: | Affinity purified on immobilized antigen. |

Target Details

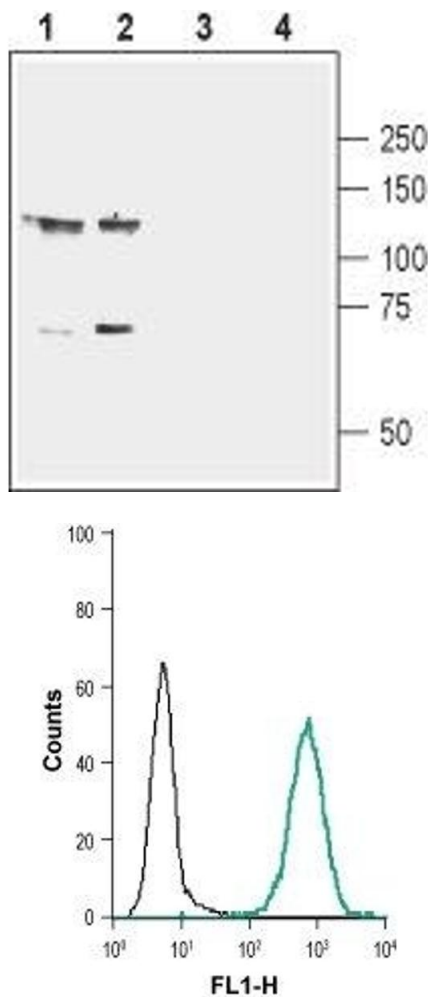
| | |
|-------------------|---|
| Target: | EPH Receptor B1 (EPHB1) |
| Alternative Name: | EphB1 (EPHB1 Products) |
| Background: | Alternative names: EphB1, Ephrin type-B receptor 1, Eph receptor B1, Tyrosine-protein kinase receptor EPH-2 |
| Gene ID: | 270190 |
| NCBI Accession: | NM_004441 |
| UniProt: | Q8CBF3 |
| Pathways: | RTK Signaling |

Application Details

| | |
|--------------------|--|
| Application Notes: | Optimal working dilution should be determined by the investigator. |
| Restrictions: | For Research Use only |

Handling

| | |
|--------------------|--|
| Format: | Lyophilized |
| Reconstitution: | 25 µL, 50 µL or 0.2 mL double distilled water (DDW), depending on the sample size. |
| Concentration: | 0.8 mg/mL |
| Buffer: | Reconstituted antibody contains phosphate buffered saline (PBS), pH 7.4, 1 % BSA, 0.05 % Sodium azide. |
| Preservative: | Sodium azide |
| Precaution of Use: | This product contains Sodium azide: a POISONOUS AND HAZARDOUS SUBSTANCE which should be handled by trained staff only. |
| Storage: | RT, 4 °C, -20 °C |
| Storage Comment: | <p>Storage before reconstitution: The antibody ships as a lyophilized powder at room temperature. Upon arrival, it should be stored at -20°C.</p> <p>Storage after reconstitution: The reconstituted solution can be stored at 4°C for up to 1 week. For longer periods, small aliquots should be stored at -20°C. Avoid multiple freezing and thawing. Centrifuge all antibody preparations before use (10000 x g 5 min).</p> |



Western Blotting

Image 1. Western blot analysis of mouse (lanes 1 and 3) and rat (lanes 2 and 4) brain membranes: - 1,2. Anti-EphB1 (extracellular) Antibody (ABIN7043126, ABIN7044251 and ABIN7044252), (1:800).3,4. Anti-EphB1 (extracellular) Antibody, preincubated with EphB1 (extracellular) Blocking Peptide (#BLP-ER021).

Flow Cytometry

Image 2. Cell surface detection of EphB1 in live intact human THP-1 monocytic leukemia cell line: (black line) Cells + goat anti-rabbit-AlexaFluor-488 secondary antibody. (green line) Cells + Anti-EphB1 (extracellular) Antibody (ABIN7043126, ABIN7044251 and ABIN7044252), (1:15) + goat-anti-rabbit-Alexa-488.

Immunocytochemistry

Image 3. Expression of EphB1 in rat PC12 cells - Cell surface detection of EphB1 in live intact rat PC12 pheochromocytoma cells. A. Extracellular staining of cells with Anti-EphB1 (extracellular) Antibody (ABIN7043126, ABIN7044251 and ABIN7044252), (1:100), followed by goat anti-rabbit-AlexaFluor-594 (red). B. Live image of the cells. C. Merge of the two images.

