

Datasheet for ABIN7043127

anti-EPH Receptor B4 antibody (Extracellular, N-Term)



[Go to Product page](#)

5 Images

Overview

Quantity:	50 µL
Target:	EPH Receptor B4 (EPHB4)
Binding Specificity:	AA 472-486, Extracellular, N-Term
Reactivity:	Human, Mouse, Rat
Host:	Rabbit
Clonality:	Polyclonal
Conjugate:	This EPH Receptor B4 antibody is un-conjugated
Application:	Western Blotting (WB), Immunohistochemistry (IHC), Immunofluorescence (IF), Flow Cytometry (FACS)

Product Details

Immunogen:	Immunogen: Synthetic peptide Immunogen Sequence: (C)HEKGAEGPSSVRFLK, corresponding to amino acid residues 472-486 of mouse EphB4
Isotype:	IgG
Characteristics:	Anti-EphB4 (extracellular) Antibody (ABIN7043127, ABIN7044253 and ABIN7044254)) is a highly specific antibody directed against an epitope of the mouse protein. The antibody can be used in western blot, immunohistochemistry, and live cell flow cytometry applications. It has been designed to recognize EphB4 from rat, mouse, and human samples.
Purification:	Affinity purified on immobilized antigen.

Target Details

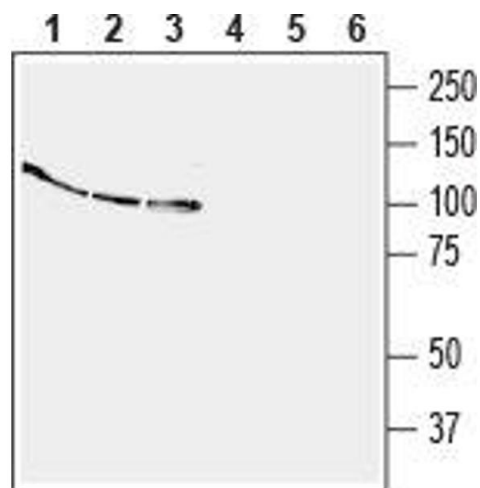
Target:	EPH Receptor B4 (EPHB4)
Alternative Name:	EphB4 (EPHB4 Products)
Background:	Alternative names: EphB4, Ephrin type-B receptor 4, Eph receptor B4, Hepatoma transmembrane kinase, HTK
Gene ID:	13846
NCBI Accession:	NM_004444
UniProt:	P54761
Pathways:	RTK Signaling

Application Details

Application Notes:	Optimal working dilution should be determined by the investigator.
Restrictions:	For Research Use only

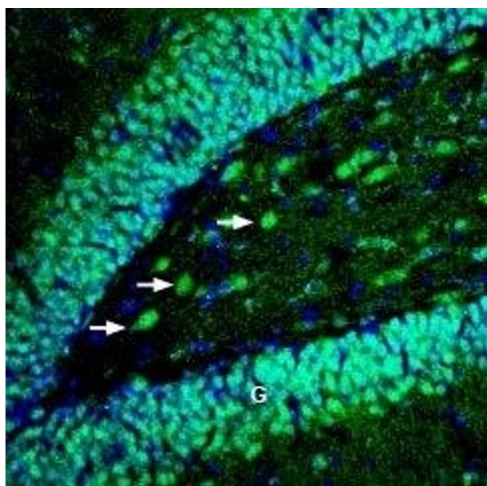
Handling

Format:	Lyophilized
Reconstitution:	25 µL, 50 µL or 0.2 mL double distilled water (DDW), depending on the sample size.
Concentration:	0.8 mg/mL
Buffer:	Reconstituted antibody contains phosphate buffered saline (PBS), pH 7.4, 1 % BSA, 0.05 % Sodium azide.
Preservative:	Sodium azide
Precaution of Use:	This product contains Sodium azide: a POISONOUS AND HAZARDOUS SUBSTANCE which should be handled by trained staff only.
Storage:	RT, 4 °C, -20 °C
Storage Comment:	<p>Storage before reconstitution: The antibody ships as a lyophilized powder at room temperature. Upon arrival, it should be stored at -20°C.</p> <p>Storage after reconstitution: The reconstituted solution can be stored at 4°C for up to 1 week. For longer periods, small aliquots should be stored at -20°C. Avoid multiple freezing and thawing. Centrifuge all antibody preparations before use (10000 x g 5 min).</p>



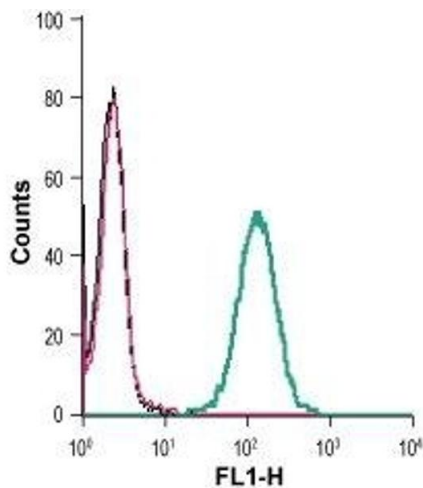
Western Blotting

Image 1. Western blot analysis of human THP-1 monocytic leukemia cell line lysate (lanes 1 and 4), human Jurkat T-cell leukemia cell line lysate (lanes 2 and 5) and human MCF-7 breast adenocarcinoma cell line lysate (lanes 3 and 6): - 1-3. Anti-EphB4 (extracellular) Antibody (ABIN7043127, ABIN7044253 and ABIN7044254), (1:200).4-6. Anti-EphB4 (extracellular) Antibody, preincubated with EphB4 (extracellular) Blocking Peptide (#BLP-ER024).



Immunohistochemistry

Image 2. Expression of EphB4 in rat hippocampus - Immunohistochemical staining of perfusion-fixed frozen rat brain sections with Anti-EphB4 (extracellular) Antibody (ABIN7043127, ABIN7044253 and ABIN7044254), (1:100), followed by goat anti-rabbit-AlexaFluor-488. EphB4 immunoreactivity (green) in the hippocampal dentate gyrus is detected in the granule layer (G) and hilar interneurons (arrows). Cell nuclei are stained with DAPI (blue).



Flow Cytometry

Image 3. Cell surface detection of EphB4 in live intact human THP-1 monocytic leukemia cells: (black line) Cells.(red line) Cells + goat-anti-rabbit-FITC.(green line) Cells + Anti-EphB4 (extracellular) Antibody (ABIN7043127, ABIN7044253 and ABIN7044254), (2.5 µg) + goat-anti-rabbit-FITC.

Please check the [product details page](#) for more images. Overall 5 images are available for ABIN7043127.