

Datasheet for ABIN7043128

anti-Ephrin A1 antibody (Extracellular)

4 Images

[Go to Product page](#)

Overview

| | |
|----------------------|--|
| Quantity: | 25 µL |
| Target: | Ephrin A1 (EFNA1) |
| Binding Specificity: | AA 150-164, Extracellular |
| Reactivity: | Human, Rat, Mouse |
| Host: | Rabbit |
| Clonality: | Polyclonal |
| Conjugate: | This Ephrin A1 antibody is un-conjugated |
| Application: | Western Blotting (WB), Immunofluorescence (IF), Immunocytochemistry (ICC), Live Cell Imaging (LCI) |

Product Details

| | |
|------------------|---|
| Immunogen: | Immunogen: Synthetic peptide Immunogen Sequence: (C)KITHSPQAHDNPQEK, corresponding to amino acid residues 150-164 of human Ephrin-A1 |
| Isotype: | IgG |
| Characteristics: | Anti-Ephrin-A1 (extracellular) Antibody is directed against an extracellular epitope of human Ephrin-A1. Anti-Ephrin-A1 (extracellular) Antibody (ABIN7043128, ABIN7044255 and ABIN7044256)) can be used in western blot and live cell imaging applications. The antibody recognizes an extracellular epitope and thus is ideal for detecting Ephrin-A1 in living cells. It has been designed to recognize Ephrin-A1 from human, rat and mouse samples. |
| Purification: | Affinity purified on immobilized antigen. |

Target Details

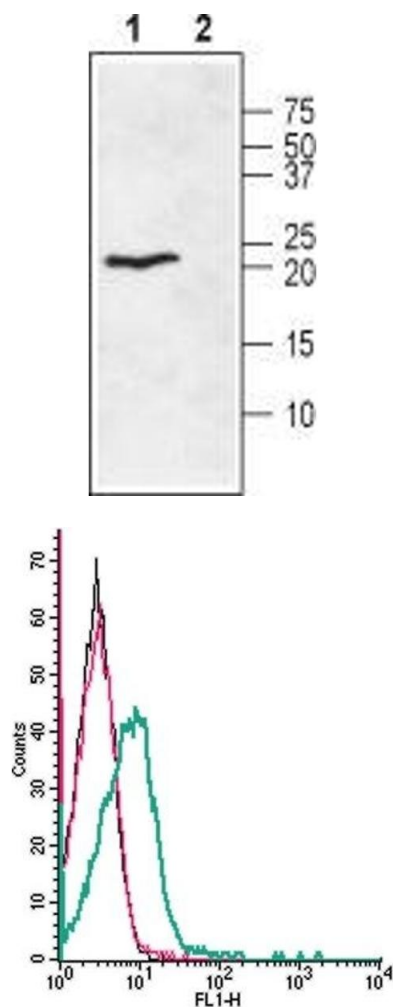
| | |
|-------------------|---|
| Target: | Ephrin A1 (EFNA1) |
| Alternative Name: | Ephrin-A1 (EFNA1 Products) |
| Background: | Alternative names: Ephrin-A1, EPH-related receptor tyrosine kinase ligand 1, LERK1, EFNA1 |
| Gene ID: | 1942 |
| NCBI Accession: | NM_004428 |
| UniProt: | P20827 |
| Pathways: | RTK Signaling |

Application Details

| | |
|--------------------|--|
| Application Notes: | Optimal working dilution should be determined by the investigator. |
| Restrictions: | For Research Use only |

Handling

| | |
|--------------------|--|
| Format: | Lyophilized |
| Reconstitution: | 25 µL, 50 µL or 0.2 mL double distilled water (DDW), depending on the sample size. |
| Concentration: | 0.8 mg/mL |
| Buffer: | Reconstituted antibody contains phosphate buffered saline (PBS), pH 7.4, 1 % BSA, 0.05 % Sodium azide. |
| Preservative: | Sodium azide |
| Precaution of Use: | This product contains Sodium azide: a POISONOUS AND HAZARDOUS SUBSTANCE which should be handled by trained staff only. |
| Storage: | RT, 4 °C, -20 °C |
| Storage Comment: | <p>Storage before reconstitution: The antibody ships as a lyophilized powder at room temperature. Upon arrival, it should be stored at -20°C.</p> <p>Storage after reconstitution: The reconstituted solution can be stored at 4°C for up to 1 week. For longer periods, small aliquots should be stored at -20°C. Avoid multiple freezing and thawing. Centrifuge all antibody preparations before use (10000 x g 5 min).</p> |



Western Blotting

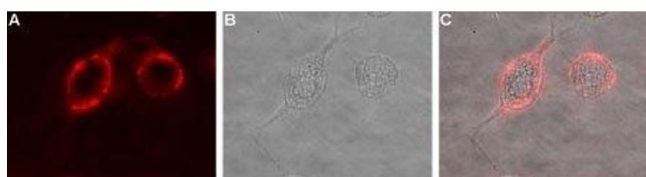
Image 1. Western blot analysis of rat heart membranes: - 1. Anti-Ephrin-A1 (extracellular) Antibody (ABIN7043128, ABIN7044255 and ABIN7044256), (1:400). 2. Anti-Ephrin-A1 (extracellular) Antibody, preincubated with Ephrin-A1 (extracellular) Blocking Peptide (#BLP-ER031).

Flow Cytometry

Image 2. Cell surface detection of Ephrin-A1 by indirect flow cytometry in live intact human Jurkat T-cell leukemia cells: (black line) Cells. (red line) Cells + goat-anti-rabbit-FITC. (green line) Cells + Anti-Ephrin-A1 (extracellular) Antibody (ABIN7043128, ABIN7044255 and ABIN7044256), (5 µg) + goat-anti-rabbit-FITC.

Immunocytochemistry

Image 3. Expression of Ephrin-A1 in rat PC12 cells - Cell surface detection of Ephrin-A1 in live intact rat PC12 pheochromocytoma cells. A. Extracellular staining of cells with Anti-Ephrin-A1 (extracellular) Antibody (ABIN7043128, ABIN7044255 and ABIN7044256), (1:50), followed by goat anti-rabbit-AlexaFluor-594 secondary antibody (red). B. Live view of the cells. C. Merge of A and B.



Please check the [product details page](#) for more images. Overall 4 images are available for ABIN7043128.