

Datasheet for ABIN7043129  
**anti-Ephrin A2 antibody (Extracellular)**

## 3 Images

[Go to Product page](#)

## Overview

Quantity:	50 µL
Target:	Ephrin A2 (EFNA2)
Binding Specificity:	AA 71-84, Extracellular
Reactivity:	Human, Mouse, Rat
Host:	Rabbit
Clonality:	Polyclonal
Conjugate:	This Ephrin A2 antibody is un-conjugated
Application:	Western Blotting (WB), Immunofluorescence (IF), Flow Cytometry (FACS), Immunohistochemistry (IHC)

## Product Details

Immunogen:	Immunogen: Synthetic peptide Immunogen Sequence: (C)HYGAPLPPAERMER, corresponding to amino acid residues 71-84 of mouse Ephrin-A2
Isotype:	IgG
Characteristics:	Anti-Ephrin-A2 (extracellular) Antibody (ABIN7043129, ABIN7044257 and ABIN7044258)) is a highly specific antibody directed against an epitope of mouse EFNA2. The antibody can be used in western blot, immunohistochemistry, and live cell flow cytometry. It has been designed to recognize EFNA2 from rat, mouse, and human samples.
Purification:	Affinity purified on immobilized antigen.

## Target Details

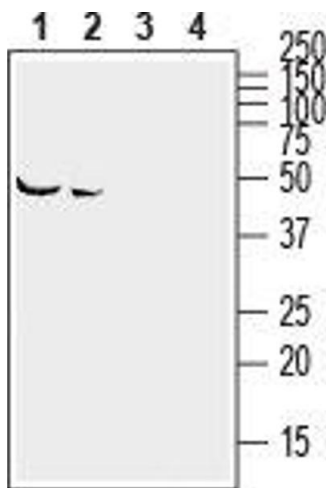
Target:	Ephrin A2 (EFNA2)
Alternative Name:	Ephrin-A2 ( <a href="#">EFNA2 Products</a> )
Background:	Alternative names: Ephrin-A2, EPH-related receptor tyrosine kinase ligand 6, LERK6, CEK7-ligand, EFNA2
Gene ID:	13637
NCBI Accession:	<a href="#">NM_001405</a>
UniProt:	<a href="#">P52801</a>

## Application Details

Application Notes:	Optimal working dilution should be determined by the investigator.
Restrictions:	For Research Use only

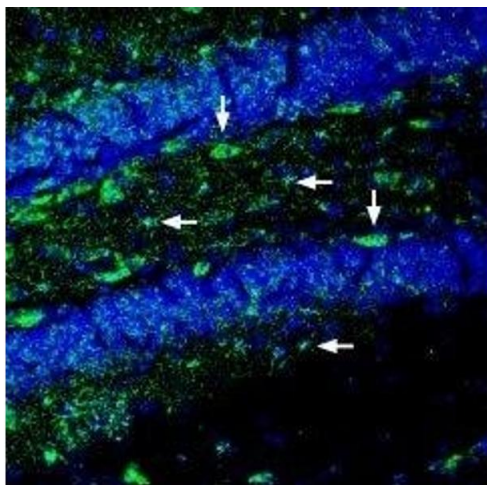
## Handling

Format:	Lyophilized
Reconstitution:	25 µL, 50 µL or 0.2 mL double distilled water (DDW), depending on the sample size.
Concentration:	0.8 mg/mL
Buffer:	Reconstituted antibody contains phosphate buffered saline (PBS), pH 7.4, 1 % BSA, 0.05 % Sodium azide.
Preservative:	Sodium azide
Precaution of Use:	This product contains Sodium azide: a POISONOUS AND HAZARDOUS SUBSTANCE which should be handled by trained staff only.
Storage:	RT, 4 °C, -20 °C
Storage Comment:	<p>Storage before reconstitution: The antibody ships as a lyophilized powder at room temperature. Upon arrival, it should be stored at -20°C.</p> <p>Storage after reconstitution: The reconstituted solution can be stored at 4°C for up to 1 week. For longer periods, small aliquots should be stored at -20°C. Avoid multiple freezing and thawing. Centrifuge all antibody preparations before use (10000 x g 5 min).</p>



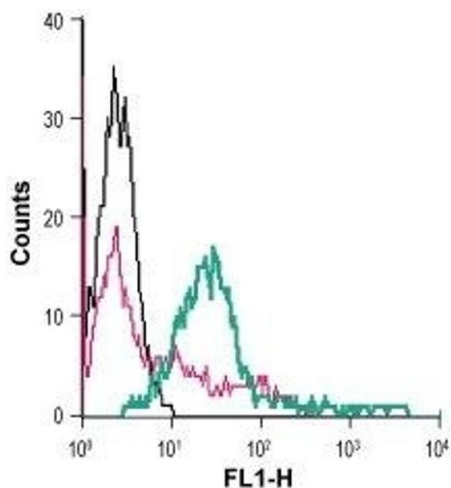
### Western Blotting

**Image 1.** Western blot analysis of mouse (lanes 1 and 3) and rat (lanes 2 and 4) brain lysates: - 1,2. Anti-Ephrin-A2 (extracellular) Antibody (ABIN7043129, ABIN7044257 and ABIN7044258), (1:400).3,4. Anti-Ephrin-A2 (extracellular) Antibody, preincubated with Ephrin-A2 (extracellular) Blocking Peptide (#BLP-ER032).



### Immunohistochemistry

**Image 2.** Expression of Ephrin-A2 in mouse hippocampus - Immunohistochemical staining of perfusion-fixed frozen mouse brain sections with Anti-Ephrin-A2 (extracellular) Antibody (ABIN7043129, ABIN7044257 and ABIN7044258), (1:200), followed by goat-anti-rabbit-AlexaFluor-488. Ephrin-A2 staining (green) in hippocampal dentate gyrus appears in neurons (vertical arrows) and astrocytes (horizontal arrows). Cell nuclei are stained with DAPI (blue).



### Flow Cytometry

**Image 3.** Cell surface detection of Ephrin-A2 in live intact human Jurkat T-cell leukemia cells: (black line) Cells.(red line) Cells + goat-anti-rabbit-FITC.(green line) Cells + Anti-Ephrin-A2 (extracellular) Antibody (ABIN7043129, ABIN7044257 and ABIN7044258), 5 µg + goat-anti-rabbit-FITC.