

Datasheet for ABIN7043132

**anti-EPHA1 antibody (Extracellular, N-Term)**

## 4 Images

[Go to Product page](#)

## Overview

|                      |  |
|----------------------|--|
| Quantity:            | 50 µL  |
| Target:              | EPHA1  |
| Binding Specificity: | AA 457-471, Extracellular, N-Term  |
| Reactivity:          | Human, Mouse, Rat  |
| Host:                | Rabbit   |
| Clonality:           | Polyclonal   |
| Conjugate:           | This EPHA1 antibody is un-conjugated   |
| Application:         | Western Blotting (WB), Immunofluorescence (IF), Flow Cytometry (FACS),<br>Immunocytochemistry (ICC), Live Cell Imaging (LCI) |

## Product Details

|                  |   |
|------------------|---|
| Immunogen:       | Immunogen: Synthetic peptide<br>Immunogen Sequence: (C)KKEPRQLELTWAGSR, corresponding to amino acid residues 457-471 of human EphA1   |
| Isotype:         | IgG   |
| Characteristics: | Anti-EphA1 (extracellular) Antibody (ABIN7043132, ABIN7044243 and ABIN7044244)) is a highly specific antibody directed against an epitope of the human protein. The antibody can be used in western blot, immunocytochemistry, live cell imaging, and indirect live cell flow cytometry applications. It has been designed to recognize EphA1 from rat, mouse, and human samples. |
| Purification:    | Affinity purified on immobilized antigen.   |

## Target Details

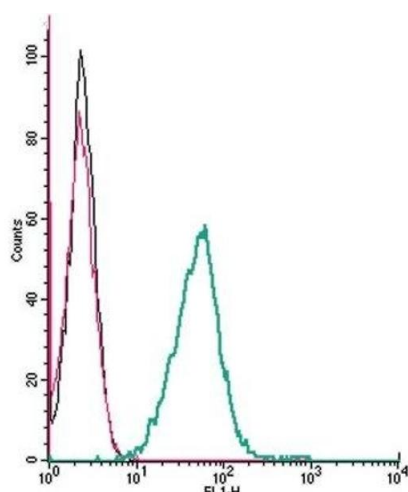
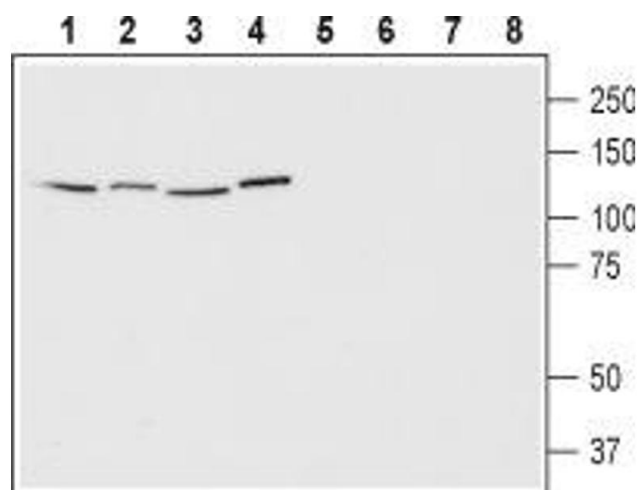
|                   |   |
|-------------------|---|
| Target:           | EPHA1   |
| Alternative Name: | EphA1 ( <a href="#">EPHA1 Products</a> )  |
| Background:       | Alternative names: EphA1, Ephrin type-A receptor 1, Eph receptor A1, EPH tyrosine kinase 1, Tyrosine-protein kinase receptor EPH, EPHT1 |
| Gene ID:          | 2041  |
| NCBI Accession:   | <a href="#">NM_005232</a>   |
| UniProt:          | <a href="#">P21709</a>  |

## Application Details

|                    |  |
|--------------------|--|
| Application Notes: | Optimal working dilution should be determined by the investigator. |
| Restrictions:      | For Research Use only  |

## Handling

|                    |  |
|--------------------|--|
| Format:            | Lyophilized  |
| Reconstitution:    | 25 µL, 50 µL or 0.2 mL double distilled water (DDW), depending on the sample size.   |
| Concentration:     | 0.8 mg/mL  |
| Buffer:            | Reconstituted antibody contains phosphate buffered saline (PBS), pH 7.4, 1 % BSA, 0.05 % Sodium azide.   |
| Preservative:      | Sodium azide   |
| Precaution of Use: | This product contains Sodium azide: a POISONOUS AND HAZARDOUS SUBSTANCE which should be handled by trained staff only.   |
| Storage:           | RT, 4 °C, -20 °C   |
| Storage Comment:   | <p>Storage before reconstitution: The antibody ships as a lyophilized powder at room temperature. Upon arrival, it should be stored at -20°C.</p> <p>Storage after reconstitution: The reconstituted solution can be stored at 4°C for up to 1 week. For longer periods, small aliquots should be stored at -20°C. Avoid multiple freezing and thawing. Centrifuge all antibody preparations before use (10000 x g 5 min).</p> |



### Western Blotting

**Image 1.** Western blot analysis of human Jurkat T cell leukemia cells (lanes 1 and 5), human HeLa cervix adenocarcinoma cells (lanes 2 and 6), human SH-SY5Y neuroblastoma cells (lanes 3 and 7) and human MCF-7 breast adenocarcinoma cells (lanes 4 and 8): - 1-4. Anti-EphA1 (extracellular) Antibody (ABIN7043132, ABIN7044243 and ABIN7044244), (1:200). 5-8. Anti-EphA1 (extracellular) Antibody, preincubated with EphA1 (extracellular) Blocking Peptide (#BLP-ER011).

### Flow Cytometry

**Image 2.** Cell surface detection of EphA1 by indirect flow cytometry in live intact mouse J774 macrophage cells: (black line) Cells. (red line) Cells + goat-anti-rabbit-FITC. (green line) Cells + Anti-EphA1 (extracellular) Antibody (ABIN7043132, ABIN7044243 and ABIN7044244), (2.5 µg) + goat-anti-rabbit-FITC).

### Immunocytochemistry

**Image 3.** Expression of EphA1 in human MCF-7 cells - Cell surface detection of EphA1 in live intact MCF-7 breast adenocarcinoma cells. Cells were stained with Anti-EphA1 (extracellular) Antibody (ABIN7043132, ABIN7044243 and ABIN7044244), (1:25) followed by goat anti-rabbit-AlexaFluor-594 secondary antibody (red). B. Live image of the cells stained in A. C. Merge image of A and B.

Please check the [product details page](#) for more images. Overall 4 images are available for ABIN7043132.