

Datasheet for ABIN7043133
anti-PIEZO2 antibody (AA 1092-1104)[Go to Product page](#)

3 Images

Overview

Quantity:	0.2 mL
Target:	PIEZO2 (FAM38B)
Binding Specificity:	AA 1092-1104
Reactivity:	Human, Mouse, Rat
Host:	Rabbit
Clonality:	Polyclonal
Application:	Western Blotting (WB), Immunohistochemistry (IHC)

Product Details

Immunogen:	Immunogen: Synthetic peptide Immunogen Sequence: (C)RTIFHDITRLHLD, corresponding to amino acid residues 1092 - 1104 of human Piezo2
Isotype:	IgG
Characteristics:	Anti-Piezo2 Antibody (ABIN7043133, ABIN7044990 and ABIN7044991)) is a highly specific antibody directed against an epitope of the human protein. The antibody can be used in western blot analysis. It has been designed to recognize Piezo2 from human, rat, and mouse samples.
Purification:	Affinity purified on immobilized antigen.

Target Details

Target:	PIEZO2 (FAM38B)
---------	-----------------

Target Details

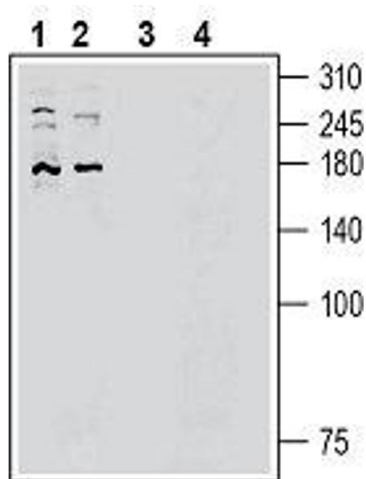
Alternative Name:	Piezo2 (FAM38B Products)
Background:	Alternative names: Piezo-Type Mechanosensitive Ion Channel Component 2, Protein FAM38B
Gene ID:	44133
NCBI Accession:	NM_022068
UniProt:	Q9H5I5

Application Details

Application Notes:	Optimal working dilution should be determined by the investigator.
Restrictions:	For Research Use only

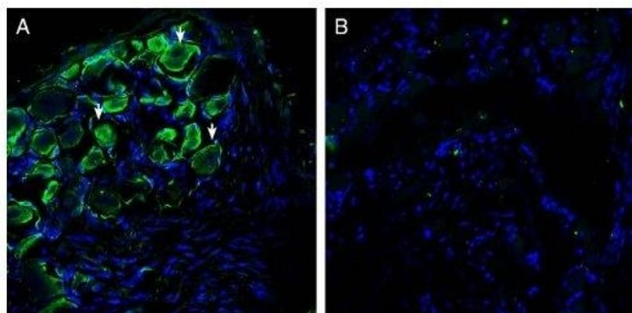
Handling

Format:	Lyophilized
Reconstitution:	25 µL, 50 µL or 0.2 mL double distilled water (DDW), depending on the sample size.
Concentration:	0.8 mg/mL
Buffer:	Reconstituted antibody contains phosphate buffered saline (PBS), pH 7.4, 1 % BSA, 0.05 % Sodium azide.
Preservative:	Sodium azide
Precaution of Use:	This product contains Sodium azide: a POISONOUS AND HAZARDOUS SUBSTANCE which should be handled by trained staff only.
Storage:	RT, 4 °C, -20 °C
Storage Comment:	<p>Storage before reconstitution: The antibody ships as a lyophilized powder at room temperature. Upon arrival, it should be stored at -20°C.</p> <p>Storage after reconstitution: The reconstituted solution can be stored at 4°C for up to 1 week. For longer periods, small aliquots should be stored at -20°C. Avoid multiple freezing and thawing. Centrifuge all antibody preparations before use (10000 x g 5 min).</p>



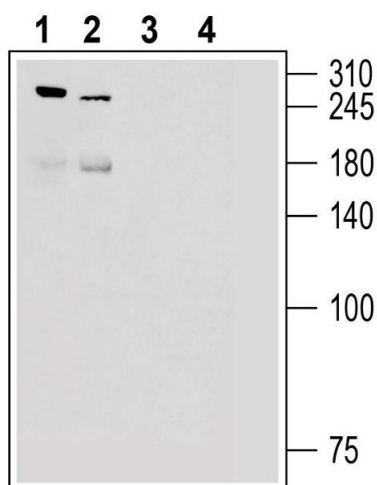
Western Blotting

Image 1. Western blot analysis of human HepG2 hepatocellular cell line lysate (lanes 1 and 3) and human HUVEC endothelial cell line lysate (lanes 2 and 4): - 1, 2. Anti-Piezo2 Antibody (ABIN7043133, ABIN7044990 and ABIN7044991), (1:200). 3, 4. Anti-Piezo2 Antibody, preincubated with Piezo2 Blocking Peptide (#BLP-PC090).



Immunohistochemistry

Image 2. Expression of Piezo2 in rat dorsal root ganglion. - Immunohistochemical staining of perfusion-fixed frozen rat dorsal root ganglion (DRG) sections with Anti-Piezo2 Antibody (ABIN7043133, ABIN7044990 and ABIN7044991), (1:200), followed by goat anti-rabbit-AlexaFluor-488. A. Piezo2 immunoreactivity (green) appeared in neuron profiles (arrows). B. Pre-incubation of the antibody with Piezo2 Blocking Peptide (#BLP-PC090), suppressed staining. Cell nuclei are stained with DAPI (blue).



Western Blotting

Image 3. Western blot analysis of rat dorsal root ganglion lysate (lanes 1 and 3) and mouse lung lysate (lanes 2 and 4): - 1, 2. Anti-Piezo2 Antibody (ABIN7043133, ABIN7044990 and ABIN7044991), (1:200). 3, 4. Anti-Piezo2 Antibody, preincubated with Piezo2 Blocking Peptide (#BLP-PC090).