

Datasheet for ABIN7043135
anti-FPR1 antibody (2nd Extracellular Loop)[Go to Product page](#)

2 Images

Overview

Quantity:	50 µL
Target:	FPR1
Binding Specificity:	2nd Extracellular Loop, AA 179-192
Reactivity:	Human
Host:	Rabbit
Clonality:	Polyclonal
Conjugate:	This FPR1 antibody is un-conjugated
Application:	Western Blotting (WB), Flow Cytometry (FACS)

Product Details

Immunogen:	Immunogen: Synthetic peptide Immunogen Sequence: (C)NFSPWTNDPKERIN, corresponding to amino acid residues 179-192 of human FPR1
Isotype:	IgG
Characteristics:	Anti-Human FPR1 (extracellular) Antibody (ABIN7043135, ABIN7044275 and ABIN7044276)) is a highly specific antibody directed against an epitope of the human N-formyl peptide receptor 1. The antibody can be used in western blot and indirect live cell flow cytometry applications. It has been designed to recognize FPR1 from human samples only.
Purification:	Affinity purified on immobilized antigen.

Target Details

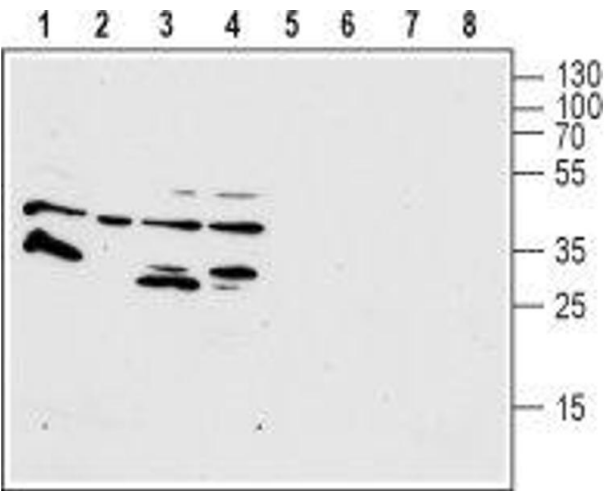
Target:	FPR1
Alternative Name:	FPR1 (FPR1 Products)
Background:	Alternative names: FPR1, N-formyl peptide receptor 1, fMLP receptor
Gene ID:	2357
NCBI Accession:	NM_002029
UniProt:	P21462

Application Details

Application Notes:	Optimal working dilution should be determined by the investigator.
Restrictions:	For Research Use only

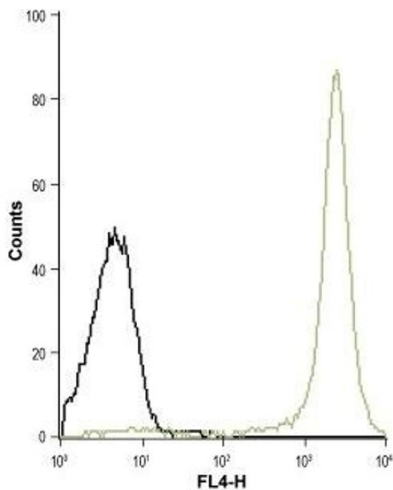
Handling

Format:	Lyophilized
Reconstitution:	25 µL, 50 µL or 0.2 mL double distilled water (DDW), depending on the sample size.
Concentration:	0.8 mg/mL
Buffer:	Reconstituted antibody contains phosphate buffered saline (PBS), pH 7.4, 1 % BSA, 0.05 % Sodium azide.
Preservative:	Sodium azide
Precaution of Use:	This product contains Sodium azide: a POISONOUS AND HAZARDOUS SUBSTANCE which should be handled by trained staff only.
Storage:	RT, 4 °C, -20 °C
Storage Comment:	<p>Storage before reconstitution: The antibody ships as a lyophilized powder at room temperature. Upon arrival, it should be stored at -20°C.</p> <p>Storage after reconstitution: The reconstituted solution can be stored at 4°C for up to 1 week. For longer periods, small aliquots should be stored at -20°C. Avoid multiple freezing and thawing. Centrifuge all antibody preparations before use (10000 x g 5 min).</p>



Western Blotting

Image 1. Western blot analysis of human HL-60 promyelocytic leukemia (lanes 1 and 4), human THP-1 acute monocytic leukemia (lanes 2 and 6), human T-84 colorectal carcinoma (lanes 3 and 7) and human U-87 MG glioblastoma (lanes 4 and 8) cell lysates: - 1-4. Anti-Human FPR1 (extracellular) Antibody (ABIN7043135, ABIN7044275 and ABIN7044276), (1:200). 5-8. Anti-Human FPR1 (extracellular) Antibody, preincubated with Human FPR1 (extracellular) Blocking Peptide (#BLP-FR001).



Flow Cytometry

Image 2. Cell surface detection of FPR1 in live intact human THP-1 acute monocytic leukemia cell line: (black line) Unstained cells + goat-anti-rabbit-Cy5. (green line) Cells + Anti-Human FPR1 (extracellular) Antibody (ABIN7043135, ABIN7044275 and ABIN7044276), (1:25) + goat-anti-rabbit-Cy5.