



Datasheet for ABIN7043137
anti-FFAR1 antibody (3rd Extracellular Loop)



[Go to Product page](#)

2 Images

Overview

| | |
|----------------------|--|
| Quantity: | 50 µL |
| Target: | FFAR1 |
| Binding Specificity: | 3rd Extracellular Loop, AA 244-259 |
| Reactivity: | Rat |
| Host: | Rabbit |
| Clonality: | Polyclonal |
| Conjugate: | This FFAR1 antibody is un-conjugated |
| Application: | Western Blotting (WB), Immunofluorescence (IF), Immunohistochemistry (IHC) |

Product Details

| | |
|------------------|---|
| Immunogen: | Immunogen: Synthetic peptide Immunogen Sequence: (C)NVSFINPDLEGSWRK corresponding to amino acid residues 244-259 of rat FFAR1 |
| Isotype: | IgG |
| Characteristics: | Anti-GPR40/FFAR1 (extracellular) Antibody (ABIN7043137, ABIN7044279 and ABIN7044280) is a highly specific antibody directed against an epitope of the rat Free fatty acid receptor 1. The antibody can be used in western blot and immunohistochemistry applications. It has been designed to recognize FFAR1 from mouse, rat, and human samples. |
| Purification: | Affinity purified on immobilized antigen. |

Target Details

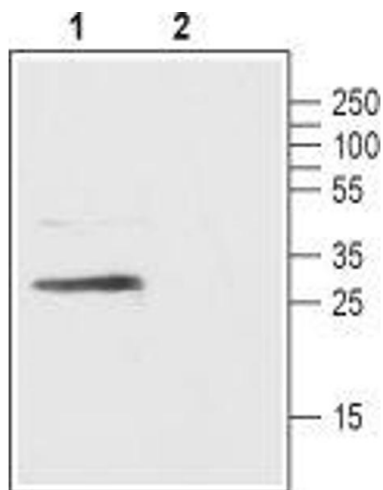
| | |
|-------------------|--|
| Target: | FFAR1 |
| Alternative Name: | GPR40/FFAR1 (FFAR1 Products) |
| Background: | Alternative names: GPR40/FFAR1, G-protein coupled receptor 40, Free fatty acid receptor 1 |
| Gene ID: | 266607 |
| NCBI Accession: | NM_005303 |
| UniProt: | Q8K3T4 |
| Pathways: | Positive Regulation of Peptide Hormone Secretion , Hormone Transport , Peptide Hormone Metabolism , Carbohydrate Homeostasis |

Application Details

| | |
|--------------------|--|
| Application Notes: | Optimal working dilution should be determined by the investigator. |
| Restrictions: | For Research Use only |

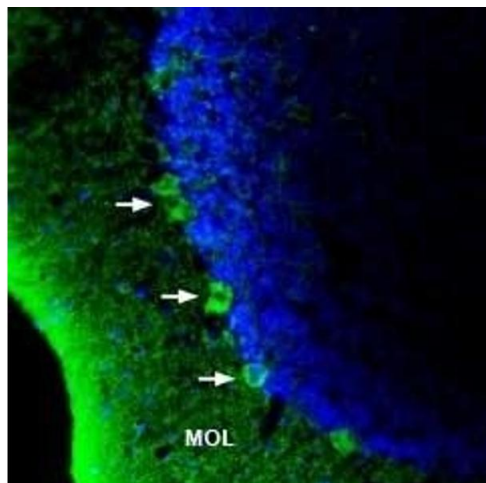
Handling

| | |
|--------------------|---|
| Format: | Lyophilized |
| Reconstitution: | 25 µL, 50 µL or 0.2 mL double distilled water (DDW), depending on the sample size. |
| Concentration: | 1 mg/mL |
| Buffer: | Reconstituted antibody contains phosphate buffered saline (PBS), pH 7.4, 1 % BSA, 0.05 % Sodium azide. |
| Preservative: | Sodium azide |
| Precaution of Use: | This product contains Sodium azide: a POISONOUS AND HAZARDOUS SUBSTANCE which should be handled by trained staff only. |
| Storage: | RT, 4 °C, -20 °C |
| Storage Comment: | Storage before reconstitution: The antibody ships as a lyophilized powder at room temperature. Upon arrival, it should be stored at -20°C. Storage after reconstitution: The reconstituted solution can be stored at 4°C for up to 1 week. For longer periods, small aliquots should be stored at -20°C. Avoid multiple freezing and thawing. Centrifuge all antibody preparations before use (10000 x g 5 min). |



Western Blotting

Image 1. Western blot analysis of rat pancreas lysate: -
 1. Anti-GPR40/FFAR1 (extracellular) Antibody (ABIN7043137, ABIN7044279 and ABIN7044280), (1:200).
 2. Anti-GPR40/FFAR1 (extracellular) Antibody, preincubated with GPR40/FFAR1 (extracellular) Blocking Peptide (#BLP-FR011).



Immunohistochemistry

Image 2. Expression of GPR40/FFAR1 in rat brain -
 Immunohistochemical staining of rat brain sections using Anti-GPR40/FFAR1 (extracellular) Antibody (ABIN7043137, ABIN7044279 and ABIN7044280). A. GPR40 immunoreactivity (green) in the cerebellum appears in the molecular layer (MOL) and in Purkinje cells (arrows). Nuclei are demonstrated using DAPI as the counterstain (blue).