

Datasheet for ABIN7043140

**anti-FZD1 antibody (Extracellular, N-Term)**[Go to Product page](#)**2** Images

## Overview

Quantity:	25 µL
Target:	FZD1 (Fzd1)
Binding Specificity:	AA 238-250, Extracellular, N-Term
Reactivity:	Human, Mouse, Rat
Host:	Rabbit
Clonality:	Polyclonal
Conjugate:	This FZD1 antibody is un-conjugated
Application:	Western Blotting (WB)

## Product Details

Immunogen:	Immunogen: Synthetic peptide Immunogen Sequence: (C)PEFWTSNPQHGGG, corresponding to amino acid residues 238-250 of rat Frizzled-1
Isotype:	IgG
Characteristics:	Anti-Frizzled-1 (FZD1) (extracellular) Antibody (ABIN7043140, ABIN7044291 and ABIN7044292)) is a highly specific antibody directed against an epitope of the rat protein. The antibody can be used in western blot analysis. It recognizes an extracellular epitope and is thus ideal for detecting the receptor in living cells. It has been designed to recognize FZD1 from rat, mouse, and human samples.
Purification:	Affinity purified on immobilized antigen.

## Target Details

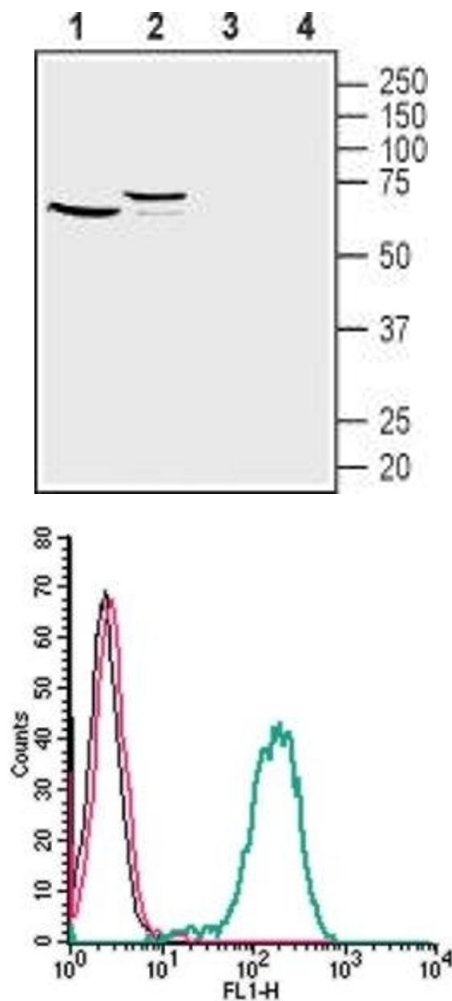
Target:	FZD1 (Fzd1)
Alternative Name:	Frizzled-1 (FZD1) ( <a href="#">Fzd1 Products</a> )
Background:	Alternative names: Frizzled-1 (FZD1), Frizzled class receptor 1, Fz-1
Gene ID:	58868
NCBI Accession:	<a href="#">NM_003505</a>
UniProt:	<a href="#">Q08463</a>
Pathways:	<a href="#">WNT Signaling, Asymmmetric Protein Localization</a>

## Application Details

Application Notes:	Optimal working dilution should be determined by the investigator.
Restrictions:	For Research Use only

## Handling

Format:	Lyophilized
Reconstitution:	25 µL, 50 µL or 0.2 mL double distilled water (DDW), depending on the sample size.
Concentration:	0.8 mg/mL
Buffer:	Reconstituted antibody contains phosphate buffered saline (PBS), pH 7.4, 1 % BSA, 0.05 % Sodium azide.
Preservative:	Sodium azide
Precaution of Use:	This product contains Sodium azide: a POISONOUS AND HAZARDOUS SUBSTANCE which should be handled by trained staff only.
Storage:	RT,4 °C,-20 °C
Storage Comment:	<p>Storage before reconstitution: The antibody ships as a lyophilized powder at room temperature. Upon arrival, it should be stored at -20°C.</p> <p>Storage after reconstitution: The reconstituted solution can be stored at 4°C for up to 1 week. For longer periods, small aliquots should be stored at -20°C. Avoid multiple freezing and thawing. Centrifuge all antibody preparations before use (10000 x g 5 min).</p>



### Western Blotting

**Image 1.** Western blot analysis of mouse (lanes 1 and 3) and rat (lanes 2 and 4) kidney lysates: - 1,2. Anti-Frizzled-1 (FZD1) (extracellular) Antibody (ABIN7043140, ABIN7044291 and ABIN7044292), (1:200).3,4. Anti-Frizzled-1 (FZD1) (extracellular) Antibody, preincubated with Frizzled-1/FZD1 (extracellular) Blocking Peptide (#BLP-FR041).

### Flow Cytometry

**Image 2.** Cell surface detection of Frizzled-1 by indirect flow cytometry in live intact human THP-1 monocytic leukemia cells: (black line) Cells.(red line) Cells + goat-anti-rabbit-FITC. (green line) Cells + Anti-Frizzled-1 (FZD1) (extracellular) Antibody (ABIN7043140, ABIN7044291 and ABIN7044292), (2.5 µg) + goat-anti-rabbit-FITC