

Datasheet for ABIN7043144  
**anti-GPER antibody (C-Term, Intracellular)**[Go to Product page](#)

## 2 Images

## Overview

Quantity:	25 µL
Target:	GPER
Binding Specificity:	AA 329-342, C-Term, Intracellular
Reactivity:	Mouse, Rat
Host:	Rabbit
Clonality:	Polyclonal
Application:	Western Blotting (WB), Immunohistochemistry (IHC), Immunofluorescence (IF)

## Product Details

Immunogen:	Immunogen: Synthetic peptide Immunogen Sequence: (C)ETFRDKLRLYVAQK, corresponding to amino acid residues 329-342 of rat GPER
Isotype:	IgG
Characteristics:	Anti-GPER (GPR30) Antibody (ABIN7043144, ABIN7044267 and ABIN7044268)) is a highly specific antibody directed against an epitope of rat G-protein coupled estrogen receptor 1. The antibody can be used in western blot and immunohistochemistry applications. It has been designed to recognize GPER from rat, mouse and human samples.
Purification:	Affinity purified on immobilized antigen.

## Target Details

Target:	GPER
---------	------

## Target Details

Alternative Name:	GPER (GPR30) ( <a href="#">GPER Products</a> )
Background:	Alternative names: GPER (GPR30), G-protein coupled estrogen receptor 1, GPER1, GPR41, Chemoattractant receptor-like 2, Cmkrl2
Gene ID:	171104
NCBI Accession:	<a href="#">NM_001039966</a>
UniProt:	<a href="#">O08878</a>
Pathways:	<a href="#">EGFR Signaling Pathway</a> , <a href="#">Positive Regulation of Peptide Hormone Secretion</a> , <a href="#">Intracellular Steroid Hormone Receptor Signaling Pathway</a> , <a href="#">Steroid Hormone Mediated Signaling Pathway</a> , <a href="#">Carbohydrate Homeostasis</a> , <a href="#">cAMP Metabolic Process</a> , <a href="#">Regulation of G-Protein Coupled Receptor Protein Signaling</a> , <a href="#">Positive Regulation of Endopeptidase Activity</a> , <a href="#">Regulation of Carbohydrate Metabolic Process</a>

## Application Details

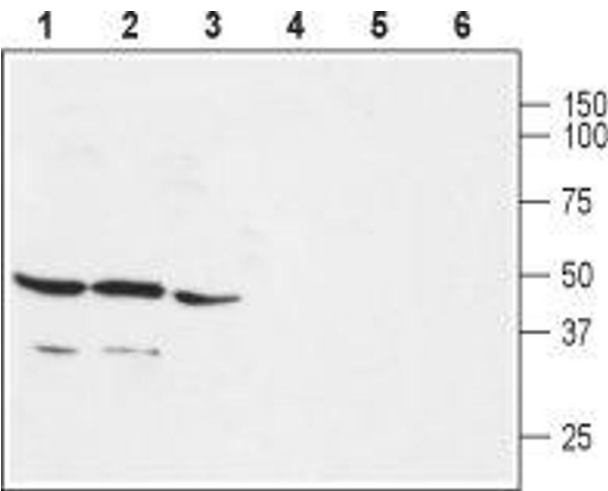
Application Notes:	Optimal working dilution should be determined by the investigator.
Restrictions:	For Research Use only

## Handling

Format:	Lyophilized
Reconstitution:	25 µL, 50 µL or 0.2 mL double distilled water (DDW), depending on the sample size.
Concentration:	0.85 mg/mL
Buffer:	Reconstituted antibody contains phosphate buffered saline (PBS), pH 7.4, 1 % BSA, 0.05 % Sodium azide.
Preservative:	Sodium azide
Precaution of Use:	This product contains Sodium azide: a POISONOUS AND HAZARDOUS SUBSTANCE which should be handled by trained staff only.
Storage:	RT, 4 °C, -20 °C
Storage Comment:	<p>Storage before reconstitution: The antibody ships as a lyophilized powder at room temperature. Upon arrival, it should be stored at -20°C.</p> <p>Storage after reconstitution: The reconstituted solution can be stored at 4°C for up to 1 week. For longer periods, small aliquots should be stored at -20°C. Avoid multiple freezing and</p>

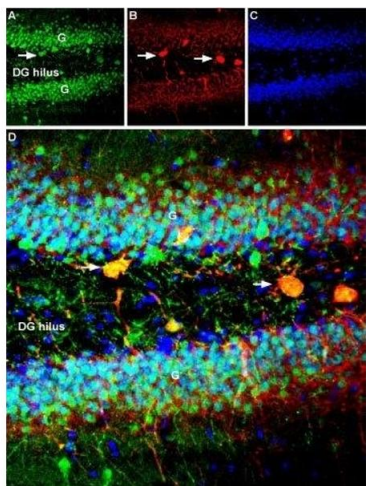
thawing. Centrifuge all antibody preparations before use (10000 x g 5 min).

Images



Western Blotting

**Image 1.** Western blot analysis of rat brain (lanes 1 and 4), mouse brain (lanes 2 and 5) and rat lung (lanes 3 and 6) membranes: - 1-3. Anti-GPER (GPR30) Antibody (ABIN7043144, ABIN7044267 and ABIN7044268), (1:200). 4-6. Anti-GPER (GPR30) Antibody, preincubated with GPER/GPR30 Blocking Peptide (#BLP-ER050).



Immunohistochemistry

**Image 2.** Expression of GPER in rat dentate gyrus - Immunohistochemical staining of rat hippocampal dentate gyrus using Anti-GPER (GPR30) Antibody (ABIN7043144, ABIN7044267 and ABIN7044268). A. GPER staining (green) appears in cells and fibers of the hilus (arrows) and granule layer (G) B. Parvalbumin (red) is detected in cells in the DG hilus (arrows). C. Nuclei staining using DAPI as the counterstain (blue). D. Merge image of panels A and B reveals colocalization in some cells (arrows).