



Datasheet for ABIN7043147

anti-G Protein-Coupled Receptor 119 antibody (2nd Cytoplasmic Loop)



[Go to Product page](#)

1 Image

Overview

Quantity:	25 µL
Target:	G Protein-Coupled Receptor 119 (GPR119)
Binding Specificity:	2nd Cytoplasmic Loop, AA 186-200
Reactivity:	Mouse, Rat
Host:	Rabbit
Clonality:	Polyclonal
Conjugate:	This G Protein-Coupled Receptor 119 antibody is un-conjugated
Application:	Western Blotting (WB)

Product Details

Immunogen:	Immunogen: Synthetic peptide Immunogen Sequence: CDMLK IASVHSQHIR, corresponding to amino acid residues 186-200 of rat GPR119
Isotype:	IgG
Characteristics:	Anti-GPR119 Antibody is directed against an epitope of the rat Glucose-dependent insulinotropic receptor. Anti-GPR119 Antibody (ABIN7043147, ABIN7044419 and ABIN7044420)) can be used in western blot analysis. It has been designed to recognize GPR119 from rat, mouse and human samples.
Purification:	Affinity purified on immobilized antigen.

Target Details

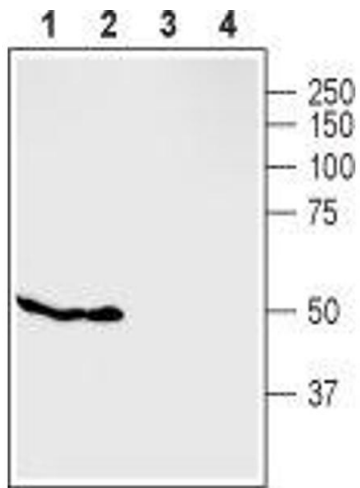
Target:	G Protein-Coupled Receptor 119 (GPR119)
Alternative Name:	GPR119 (GPR119 Products)
Background:	Alternative names: GPR119, Glucose-dependent insulinotropic receptor, GPCR2
Gene ID:	302813
NCBI Accession:	NM_178471
UniProt:	Q7TQN8
Pathways:	Hormone Transport, Peptide Hormone Metabolism

Application Details

Application Notes:	Optimal working dilution should be determined by the investigator.
Restrictions:	For Research Use only

Handling

Format:	Lyophilized
Reconstitution:	25 µL, 50 µL or 0.2 mL double distilled water (DDW), depending on the sample size.
Concentration:	0.85 mg/mL
Buffer:	Reconstituted antibody contains phosphate buffered saline (PBS), pH 7.4, 1 % BSA, 0.05 % Sodium azide.
Preservative:	Sodium azide
Precaution of Use:	This product contains Sodium azide: a POISONOUS AND HAZARDOUS SUBSTANCE which should be handled by trained staff only.
Storage:	RT, 4 °C, -20 °C
Storage Comment:	<p>Storage before reconstitution: The antibody ships as a lyophilized powder at room temperature. Upon arrival, it should be stored at -20°C.</p> <p>Storage after reconstitution: The reconstituted solution can be stored at 4°C for up to 1 week. For longer periods, small aliquots should be stored at -20°C. Avoid multiple freezing and thawing. Centrifuge all antibody preparations before use (10000 x g 5 min).</p>



Western Blotting

Image 1. Western blot analysis of rat pancreas (lanes 1 and 3) and mouse MS1 cells (lanes 2 and 4): - 1,2. Anti-GPR119 Antibody (ABIN7043147, ABIN7044419 and ABIN7044420), (1:400).3,4. Anti-GPR119 Antibody, preincubated with GPR119 Blocking Peptide (#BLP-GR032).