

Datasheet for ABIN7043148 anti-G Protein-Coupled Receptor 132 antibody (2nd Extracellular Loop)

[Go to Product page](#)

2 Images

Overview

Quantity:	0.2 mL
Target:	G Protein-Coupled Receptor 132 (GPR132)
Binding Specificity:	2nd Extracellular Loop, AA 181-195
Reactivity:	Human
Host:	Rabbit
Clonality:	Polyclonal
Conjugate:	This G Protein-Coupled Receptor 132 antibody is un-conjugated
Application:	Western Blotting (WB), Flow Cytometry (FACS)

Product Details

Immunogen:	Immunogen: Synthetic peptide Immunogen Sequence: (C)EDKET(S)FDMLQMDSR, corresponding to amino acid residues 181 - 195 of human GPR132
Isotype:	IgG
Cross-Reactivity (Details):	The antibody will not recognize rat or mouse samples.
Characteristics:	Anti-Human GPR132/G2A (extracellular) Antibody (ABIN7043148, ABIN7044431 and ABIN7044432)) is a highly specific antibody directed against an epitope of the human protein. The antibody can be used in western blot and indirect live cell flow cytometry applications. It has been designed to recognize GPR132 from human samples only. The antibody will not recognize GPR132 from mouse and rat samples.
Purification:	Affinity purified on immobilized antigen.

Target Details

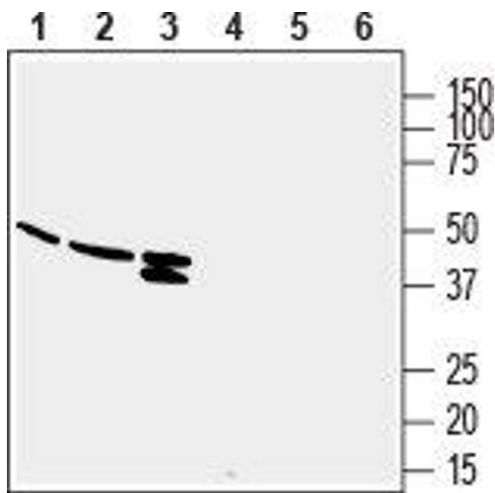
Target:	G Protein-Coupled Receptor 132 (GPR132)
Alternative Name:	GPR132/G2A (GPR132 Products)
Background:	Alternative names: G protein-coupled receptor 132, G2 accumulation protein, G2A
Gene ID:	29933
NCBI Accession:	NM_013345
UniProt:	Q9UNW8

Application Details

Application Notes:	Optimal working dilution should be determined by the investigator.
Restrictions:	For Research Use only

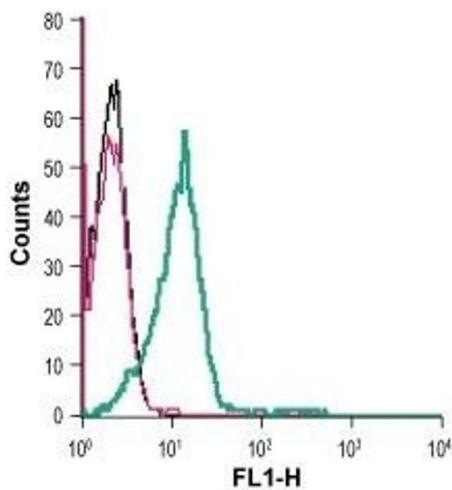
Handling

Format:	Lyophilized
Reconstitution:	25 µL, 50 µL or 0.2 mL double distilled water (DDW), depending on the sample size.
Concentration:	0.8 mg/mL
Buffer:	Reconstituted antibody contains phosphate buffered saline (PBS), pH 7.4, 1 % BSA, 0.05 % Sodium azide.
Preservative:	Sodium azide
Precaution of Use:	This product contains Sodium azide: a POISONOUS AND HAZARDOUS SUBSTANCE which should be handled by trained staff only.
Storage:	RT, 4 °C, -20 °C
Storage Comment:	<p>Storage before reconstitution: The antibody ships as a lyophilized powder at room temperature. Upon arrival, it should be stored at -20°C.</p> <p>Storage after reconstitution: The reconstituted solution can be stored at 4°C for up to 1 week. For longer periods, small aliquots should be stored at -20°C. Avoid multiple freezing and thawing. Centrifuge all antibody preparations before use (10000 x g 5 min).</p>



Western Blotting

Image 1. Western blot analysis of human THP-1 monocytic leukemia cell line lysate (lanes 1 and 4), human Raji B lymphocyte lymphoma cell line lysate (lanes 2 and 5) and human HL-60 promyelocytic leukemia cell line lysate (lanes 3 and 6): - 1-3. Anti-Human GPR132/G2A (extracellular) Antibody (ABIN7043148, ABIN7044431 and ABIN7044432), (1:200). 4-6. Anti-Human GPR132/G2A (extracellular) Antibody, preincubated with Human GPR132 (extracellular) Blocking Peptide (#BLP-GR046).



Flow Cytometry

Image 2. Cell surface detection of GPR132 in live intact human THP-1 monocytic leukemia cells: (black line) Cells.(red line) Cells + goat-anti-rabbit-FITC.(green line) Cells + Anti-Human GPR132/G2A (extracellular) Antibody (ABIN7043148, ABIN7044431 and ABIN7044432), (5 µg) + goat-anti-rabbit-FITC.